

Anti-GLUT12/SLC2A12 Antibody Picoband®

Catalog Number: PA2167

About SLC2A12

Solute carrier family 2, facilitated glucose transporter member 12, also known as SLC2A12, is a protein that in humans is encoded by the SLC2A12 gene. SLC2A12 belongs to a family of transporters that catalyze the uptake of sugars through facilitated diffusion. This family of transporters shows conservation of 12 transmembrane helices as well as functionally significant amino acid residues. By genomic sequence analysis, this gene is mapped to chromosome 6q23.2. SLC2A12 was detected in a perinuclear location in MCF7 cells in the absence of insulin; however, SLC2A12 redistributed to the plasma membrane of MCF7 cells grown continuously in the presence of insulin. This gene acts as facilitative glucose transporter.

Overview

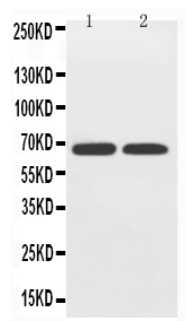
Product Name	Anti-GLUT12/SLC2A12 Antibody Picoband®
Reactive Species	Human, Mouse, Rat
Description	Boster Bio Anti-GLUT12/SLC2A12 Antibody catalog # PA2167. Tested in WB applications. This antibody reacts with Human, Mouse, Rat. The brand Picoband indicates this is a premium antibody that guarantees superior quality, high affinity, and strong signals with minimal background in Western blot applications. Only our best-performing antibodies are designated as Picoband, ensuring unmatched performance.
Application	WB
Clonality	Polyclonal
Formulation	Each vial contains antibody formulated with stabilizing components, 0.9mg NaCl, 0.2mg Na ₂ HPO ₄ , 0.05mg Thimerosal, 0.05mg NaN ₃ . *This antibody is supplied in a stabilized formulation. Compatibility with conjugation reactions depends on the chemistry of the conjugation method used. For conjugation methods that are not compatible with the stabilizing components present in this formulation, a carrier-free antibody format is required.
Storage Instructions	Store at -20°C for one year from date of receipt. After reconstitution, at 4°C for one month. It can also be aliquotted and stored frozen at -20°C for six months. Avoid repeated freeze-thaw cycles.
Host	Rabbit
Uniprot ID	Q8TD20

Technical Details

Immunogen	A synthetic peptide corresponding to a sequence in the middle region of human GLUT12, identical to the related mouse and rat sequences.
Recommended Detection Systems	Boster recommends Enhanced Chemiluminescent Kit with anti-Rabbit IgG (EK1002) for Western blot.
Cross Reactivity	No cross-reactivity with other proteins

Isotype	Rabbit IgG
Form	Lyophilized
Concentration	Adding 0.2 ml of distilled water will yield a concentration of 500 ug/ml.
Purification	Immunogen affinity purified.
Suggested Dilutions	Western blot, 0.1-0.5ug/ml, Human, Rat, Mouse

Anti-GLUT12/SLC2A12 Antibody Picoband® (PA2167) Images



Anti-GLUT12 antibody, PA2167, Western blotting
Lane 1: PC-12 Cell Lysate
Lane 2: A549 Cell Lysate

Submit a product review to Biocompare.com

Submit a review of this product to Biocompare.com to receive a \$20 Amazon.com giftcard! Your reviews help your fellow scientists make the right decisions. Thank you for your contribution.



Anti-GLUT12/SLC2A12 Antibody

For Research Use Only. Not for use in diagnostic procedures.