

Anti-SLC22A1 Antibody Picoband®

Catalog Number: PA2172

About SLC22A1

Solute carrier family 22 (organic cation transporter), member 1, also called SLC22A1 or OCT1 is a protein that in humans is encoded by the SLC22A1 gene. This gene is mapped to 6q25.3. Polyspecific organic cation transporters in the liver, kidney, intestine, and other organs are critical for elimination of many endogenous small organic cations as well as a wide array of drugs and environmental toxins. This gene transports the polyamines spermine and spermidine. It also transports pramipexole across the basolateral membrane of the proximal tubular epithelial cells. This gene regulated by various intracellular signaling pathways including inhibition by protein kinase A activation, and endogenously activation by the calmodulin complex, the calmodulin-dependent kinase II and LCK tyrosine kinase.

Overview

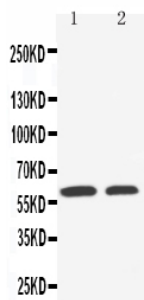
Product Name	Anti-SLC22A1 Antibody Picoband®
Reactive Species	Human
Description	Boster Bio Anti-SLC22A1 Antibody catalog # PA2172. Tested in WB applications. This antibody reacts with Human. The brand Picoband indicates this is a premium antibody that guarantees superior quality, high affinity, and strong signals with minimal background in Western blot applications. Only our best-performing antibodies are designated as Picoband, ensuring unmatched performance.
Application	WB
Clonality	Polyclonal
Formulation	Each vial contains antibody formulated with stabilizing components, 0.9mg NaCl, 0.2mg Na2HPO4, 0.05mg Thimerosal, 0.05mg NaN3. *This antibody is supplied in a stabilized formulation. Compatibility with conjugation reactions depends on the chemistry of the conjugation method used. For conjugation methods that are not compatible with the stabilizing components present in this formulation, a carrier-free antibody format is required.
Storage Instructions	Store at -20°C for one year from date of receipt. After reconstitution, at 4°C for one month. It can also be aliquotted and stored frozen at -20°C for six months. Avoid repeated freeze-thaw cycles.
Host	Rabbit
Uniprot ID	O15245

Technical Details

Immunogen	A synthetic peptide corresponding to a sequence at the C-terminus of human SLC22A1, different from the related mouse and rat sequences by six amino acids.
Recommended Detection Systems	Boster recommends Enhanced Chemiluminescent Kit with anti-Rabbit IgG (EK1002) for Western blot.

Cross Reactivity	No cross-reactivity with other proteins
Isotype	Rabbit IgG
Form	Lyophilized
Concentration	Adding 0.2 ml of distilled water will yield a concentration of 500 ug/ml.
Purification	Immunogen affinity purified.
Suggested Dilutions	Western blot, 0.1-0.5ug/ml, Human

Anti-SLC22A1 Antibody Picoband® (PA2172) Images



Anti-SLC22A1 antibody, PA2172, Western blotting
Lane 1: HELA Cell Lysate
Lane 2: A549 Cell Lysate

Submit a product review to Biocompare.com

Submit a review of this product to Biocompare.com to receive a \$20 Amazon.com giftcard! Your reviews help your fellow scientists make the right decisions. Thank you for your contribution.



Anti-SLC22A1 Antibody

For Research Use Only. Not for use in diagnostic procedures.