

Anti-FLI1 Antibody Picoband®

Catalog Number: PA2179

About FLI1

Friend leukemia integration 1 transcription factor, also known as Transcription factor ERGB or Proto-oncogene Fli-1 is a protein that in humans is encoded by the human FLI1 gene. The fli1 protooncogene encodes a member of the ETS family of winged helix-turn-helix transcription factors. This gene is mapped to 11q24.3. Fli-1 is activated through retroviral insertional mutagenesis in 90% of F-MuLV-induced erythroleukemias. The constitutive activation of fli-1 in erythroblasts leads to a dramatic shift in the Epo/Epo-R signal transduction pathway, blocking erythroid differentiation, activating the Ras pathway, and resulting in massive Epo-independent proliferation of erythroblasts. These results suggest that Fli-1 overexpression in erythroblasts alters their responsiveness to Epo and triggers abnormal proliferation by switching the signaling event (s) associated with terminal differentiation to proliferation.

Overview

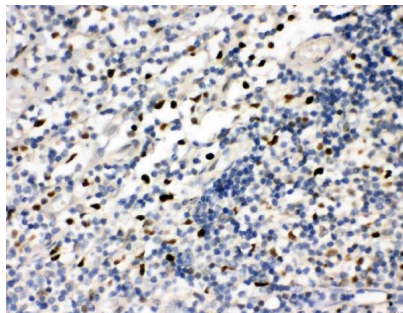
Product Name	Anti-FLI1 Antibody Picoband®
Reactive Species	Human, Mouse, Rat
Description	Boster Bio Anti-FLI1 Antibody catalog # PA2179. Tested in IHC, WB applications. This antibody reacts with Human, Mouse, Rat. The brand Picoband indicates this is a premium antibody that guarantees superior quality, high affinity, and strong signals with minimal background in Western blot applications. Only our best-performing antibodies are designated as Picoband, ensuring unmatched performance.
Application	IHC, WB
Clonality	Polyclonal
Formulation	Each vial contains antibody formulated with stabilizing components, 0.9mg NaCl, 0.2mg Na ₂ HPO ₄ , 0.05mg Thimerosal, 0.05mg NaN ₃ . *This antibody is supplied in a stabilized formulation. Compatibility with conjugation reactions depends on the chemistry of the conjugation method used. For conjugation methods that are not compatible with the stabilizing components present in this formulation, a carrier-free antibody format is required.
Storage Instructions	Store at -20°C for one year from date of receipt. After reconstitution, at 4°C for one month. It can also be aliquotted and stored frozen at -20°C for six months. Avoid repeated freeze-thaw cycles.
Host	Rabbit
Uniprot ID	Q01543

Technical Details

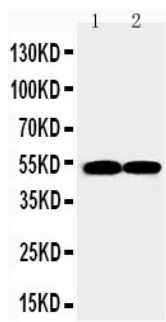
Immunogen	A synthetic peptide corresponding to a sequence at the N-terminus of human FLI1, identical to the related rat and mouse sequences.
Recommended Detection Systems	Boster recommends Enhanced Chemiluminescent Kit with anti-Rabbit IgG (EK1002) for Western

	blot, and HRP Conjugated anti-Rabbit IgG Super Vision Assay Kit (SV0002-1) for IHC(P).
Cross Reactivity	No cross-reactivity with other proteins
Isotype	Rabbit IgG
Form	Lyophilized
Concentration	Adding 0.2 ml of distilled water will yield a concentration of 500 ug/ml.
Purification	Immunogen affinity purified.
Suggested Dilutions	Immunohistochemistry (Paraffin-embedded Section), 0.5-1ug/ml, Human, Rat, Mouse Western blot, 0.1-0.5ug/ml, Human, Mouse, Rat

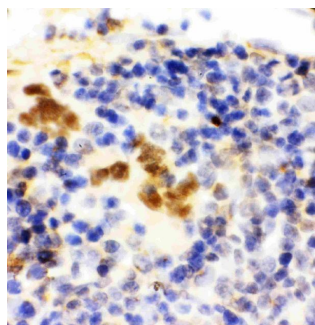
Anti-FLI1 Antibody Picoband® (PA2179) Images



Anti-FLI1 antibody, PA2179, IHC(P)IHC(P): Human Tonsil Tissue



Anti-FLI1 antibody, PA2179, Western blotting Lane 1: JURKAT Cell Lysate Lane 2: RAJI Cell Lysate



Anti-FLI1 antibody, PA2179, IHC(P)IHC(P): Rat Spleen Tissue

Submit a product review to Biocompare.com

Submit a review of this product to Biocompare.com to receive a \$20 Amazon.com giftcard! Your reviews help your fellow scientists make the right decisions. Thank you for your contribution.



Anti-FLI1 Antibody

For Research Use Only. Not for use in diagnostic procedures.