

## Anti-SLC1A4 Antibody Picoband®

Catalog Number: PA2186

### About SLC1A4

Neutral amino acid transporter A, also called SLC1A4 or ASCT1, is a protein that in humans is encoded by the SLC1A4 gene. The SLC1A4 gene is mapped to chromosome 2p14 based on an alignment of the SLC1A4 sequence with the genomic sequence (GRCh37). ASCT1 does not transport glutamate or aspartate but alanine, serine, cysteine, and threonine instead. It is found that the ASCT1 transporter functions primarily as an amino acid exchanger. Transport is associated with a chloride channel activity that is thermodynamically uncoupled from amino acid transport. This gene also exhibits sodium dependence.

### Overview

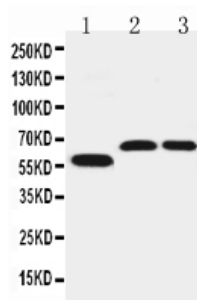
Product Name	Anti-SLC1A4 Antibody Picoband®
Reactive Species	Human, Mouse, Rat
Description	Boster Bio Anti-SLC1A4 Antibody catalog # PA2186. Tested in IHC, WB applications. This antibody reacts with Human, Mouse, Rat. The brand Picoband indicates this is a premium antibody that guarantees superior quality, high affinity, and strong signals with minimal background in Western blot applications. Only our best-performing antibodies are designated as Picoband, ensuring unmatched performance.
Application	IHC, WB
Clonality	Polyclonal
Formulation	Each vial contains antibody formulated with stabilizing components, 0.9mg NaCl, 0.2mg Na <sub>2</sub> HPO <sub>4</sub> , 0.05mg Thimerosal, 0.05mg NaN <sub>3</sub> . *This antibody is supplied in a stabilized formulation. Compatibility with conjugation reactions depends on the chemistry of the conjugation method used. For conjugation methods that are not compatible with the stabilizing components present in this formulation, a carrier-free antibody format is required.
Storage Instructions	Store at -20°C for one year from date of receipt. After reconstitution, at 4°C for one month. It can also be aliquotted and stored frozen at -20°C for six months. Avoid repeated freeze-thaw cycles.
Host	Rabbit
Uniprot ID	P43007

### Technical Details

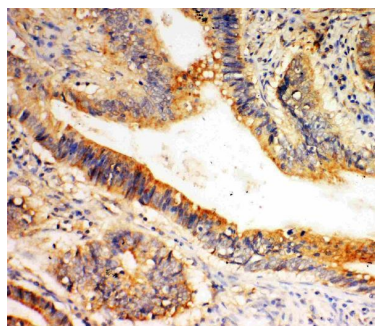
Immunogen	A synthetic peptide corresponding to a sequence at the C-terminus of human SLC1A4, different from the related rat and mouse sequences by one amino acid.
Recommended Detection Systems	Boster recommends Enhanced Chemiluminescent Kit with anti-Rabbit IgG (EK1002) for Western blot, and HRP Conjugated anti-Rabbit IgG Super Vision Assay Kit (SV0002-1) for IHC(P).
Cross Reactivity	No cross-reactivity with other proteins

Isotype	Rabbit IgG
Form	Lyophilized
Concentration	Adding 0.2 ml of distilled water will yield a concentration of 500 ug/ml.
Purification	Immunogen affinity purified.
Suggested Dilutions	Immunohistochemistry (Paraffin-embedded Section), 0.5-1ug/ml, Human, Rat, Mouse Western blot, 0.1-0.5ug/ml, Human, Mouse, Rat

## Anti-SLC1A4 Antibody Picoband® (PA2186) Images



Anti-SLC1A4 antibody, PA2186, Western blotting  
Lane 1: U87 Cell Lysate  
Lane 2: Rat Brain Tissue Lysate  
Lane 3: Mouse Brain Tissue Lysate



Anti-SLC1A4 antibody, PA2186, IHC(P)  
IHC(P): Human Intestinal Cancer Tissue

### Submit a product review to [Biocompare.com](https://www.biocompare.com)

Submit a review of this product to [Biocompare.com](https://www.biocompare.com) to receive a \$20 Amazon.com giftcard! Your reviews help your fellow scientists make the right decisions. Thank you for your contribution.



Anti-SLC1A4 Antibody

For Research Use Only. Not for use in diagnostic procedures.