

Anti-Monocarboxylate transporter 5 SLC16A4 Antibody Picoband®

Catalog Number: PA2189

About SLC16A4

Monocarboxylate transporter 5, also called Solute carrier family 16 member 4 or MCT4, is a protein that in humans is encoded by the SLC16A4 gene. This gene is mapped to 1p13.3. It acts as the proton-linked monocarboxylate transporter. This gene catalyzes the rapid transport across the plasma membrane of many monocarboxylates such as lactate, pyruvate, branched-chain oxo acids derived from leucine, valine and isoleucine, and the ketone bodies acetoacetate, beta-hydroxybutyrate and acetate.

Overview

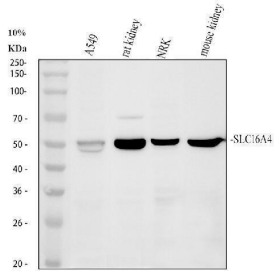
Product Name	Anti-Monocarboxylate transporter 5 SLC16A4 Antibody Picoband®
Reactive Species	Human, Mouse, Rat
Description	Boster Bio Anti-Monocarboxylate transporter 5 SLC16A4 Antibody catalog # PA2189. Tested in ICC/IF, IHC, WB applications. This antibody reacts with Human, Mouse, Rat. The brand Picoband indicates this is a premium antibody that guarantees superior quality, high affinity, and strong signals with minimal background in Western blot applications. Only our best-performing antibodies are designated as Picoband, ensuring unmatched performance.
Application	IF, IHC, ICC, WB
Clonality	Polyclonal
Formulation	Each vial contains 4 mg Trehalose, 0.9 mg NaCl and 0.2 mg Na ₂ HPO ₄ .
Storage Instructions	Store at -20°C for one year from date of receipt. After reconstitution, at 4°C for one month. It can also be aliquotted and stored frozen at -20°C for six months. Avoid repeated freeze-thaw cycles.
Host	Rabbit
Uniprot ID	O15374

Technical Details

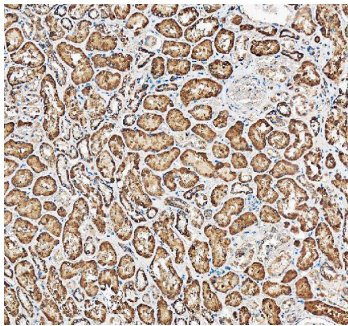
Immunogen	A synthetic peptide corresponding to a sequence at the N-terminus of human SLC16A4, different from the related rat and mouse sequences by two amino acids.
Recommended Detection Systems	Boster recommends ECL Plus Western Blotting Substrate (Catalog # AR1196-200) for Western blot, and HRP Conjugated anti-Rabbit IgG Super Vision Assay Kit (SV0002-1) for IHC(P) and ICC.
Cross Reactivity	No cross-reactivity with other proteins
Isotype	Rabbit IgG
Form	Lyophilized
Concentration	Adding 0.2 ml of distilled water will yield a concentration of 500 ug/ml.

Purification	Immunogen affinity purified.
Suggested Dilutions	Western blot, 0.1-0.5ug/ml, Human, Mouse, Rat Immunohistochemistry (Paraffin-embedded Section), 2-5ug/ml, Human Immunocytochemistry/Immunofluorescence, 5 ug/ml, Human

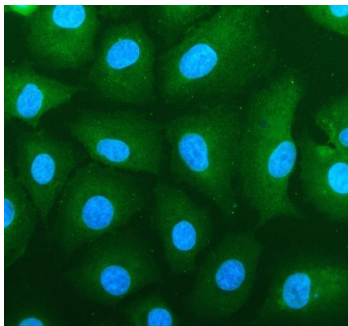
Anti-Monocarboxylate transporter 5 SLC16A4 Antibody Picoband® (PA2189) Images



Western blot analysis of SLC16A4 using anti-SLC16A4 antibody (PA2189). Electrophoresis was performed on a 10% SDS-PAGE gel at 80V (Stacking gel) / 120V (Resolving gel) for 2 hours. The sample well of each lane was loaded with 30 ug of sample under reducing conditions. Lane 1: human A549 whole cell lysates, Lane 2: rat kidney tissue lysates, Lane 3: rat NRK whole cell lysates, Lane 4: mouse kidney tissue lysates. After electrophoresis, proteins were transferred to a nitrocellulose membrane at 150 mA for 50-90 minutes. Blocked the membrane with 5% non-fat milk/TBS for 1.5 hour at RT. The membrane was incubated with rabbit anti-SLC16A4 antigen affinity purified polyclonal antibody (PA2189) at 0.5 ug/mL overnight at 4°C, then washed with TBS-0.1%Tween 3 times with 5 minutes each and probed with a goat anti-rabbit IgG-HRP secondary antibody (Catalog # BA1054) at a dilution of 1:5000 for 1.5 hour at RT. The signal is developed using an ECL Plus Western Blotting Substrate (Catalog # AR1196-200) with Tanon 5200 system. A specific band was detected for SLC16A4 at approximately 54 kDa. The expected band size for SLC16A4 is at 54 kDa.



IHC analysis of SLC16A4 using anti-SLC16A4 antibody (PA2189). SLC16A4 was detected in a paraffin-embedded section of human kidney tissue. Heat mediated antigen retrieval was performed in EDTA buffer (pH 8.0, epitope retrieval solution). The tissue section was blocked with 10% goat serum. The tissue section was then incubated with 2 ug/ml rabbit anti-SLC16A4 Antibody (PA2189) overnight at 4°C. Peroxidase Conjugated Goat Anti-rabbit IgG was used as secondary antibody and incubated for 30 minutes at 37°C. The tissue section was developed using HRP Conjugated Rabbit IgG Super Vision Assay Kit (Catalog # SV0002) with DAB as the chromogen.



IF analysis of SLC16A4 using anti-SLC16A4 antibody (PA2189). SLC16A4 was detected in an immunocytochemical section of A549 cells. Enzyme antigen retrieval was performed using IHC enzyme antigen retrieval reagent (AR0022) for 15 mins. The cells were blocked with 10% goat serum. And then incubated with 5 ug/mL rabbit anti-SLC16A4 Antibody (PA2189) overnight at 4°C. Fluoro488 Conjugated Goat Anti-Rabbit IgG (BA1127) was used as secondary antibody at 1:500 dilution and incubated for 30 minutes at 37°C. The section was counterstained with DAPI. Visualize using a fluorescence microscope and filter sets appropriate for the label used.

Submit a product review to [Biocompare.com](https://www.biocompare.com)

Submit a review of this product to [Biocompare.com](https://www.biocompare.com) to receive a \$20 Amazon.com giftcard! Your



reviews help your fellow scientists make the right decisions. Thank you for your contribution.

Anti-Monocarboxylate transporter 5 SLC16A4 Antibody

For Research Use Only. Not for use in diagnostic procedures.