

## Anti-Angiotensin Converting Enzyme 1/ACE Antibody Picoband®

Catalog Number: PA2196-1

### About ACE

Angiotensin I converting enzyme (ACE), also called DCP or CD143, is a zinc-containing dipeptidyl carboxypeptidase widely distributed in mammalian tissues and is thought to play a critical role in blood pressure regulation. ACE gene is mapped to 17q23.3. This gene encodes an enzyme involved in catalyzing the conversion of angiotensin I into a physiologically active peptide angiotensin II. Angiotensin II is a potent vasopressor and aldosterone-stimulating peptide that controls blood pressure and fluid-electrolyte balance. This enzyme plays a key role in the renin-angiotensin system. Many studies have associated the presence or absence of a 287 bp Alu repeat element in this gene with the levels of circulating enzyme or cardiovascular pathophysiology.

### Overview

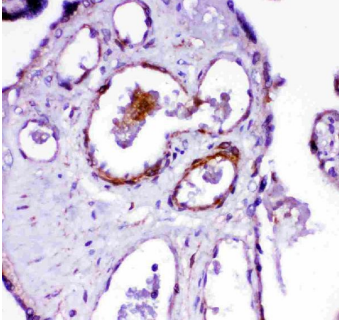
Product Name	Anti-Angiotensin Converting Enzyme 1/ACE Antibody Picoband®
Reactive Species	Human
Description	Boster Bio <a href="#">Anti-Angiotensin Converting Enzyme 1/ACE Antibody</a> catalog # PA2196-1. Tested in IHC, WB applications. This antibody reacts with Human. The brand Picoband indicates this is a premium antibody that guarantees superior quality, high affinity, and strong signals with minimal background in Western blot applications. Only our best-performing antibodies are designated as Picoband, ensuring unmatched performance.
Application	IHC, WB
Clonality	Polyclonal
Formulation	Each vial contains antibody formulated with stabilizing components, 0.9mg NaCl, 0.2mg Na <sub>2</sub> HPO <sub>4</sub> , 0.05mg Thimerosal, 0.05mg NaN <sub>3</sub> . *This antibody is supplied in a stabilized formulation. Compatibility with conjugation reactions depends on the chemistry of the conjugation method used. For conjugation methods that are not compatible with the stabilizing components present in this formulation, a carrier-free antibody format is required.
Storage Instructions	Store at -20°C for one year from date of receipt. After reconstitution, at 4°C for one month. It can also be aliquotted and stored frozen at -20°C for six months. Avoid repeated freeze-thaw cycles.
Host	Rabbit
Uniprot ID	P12821

### Technical Details

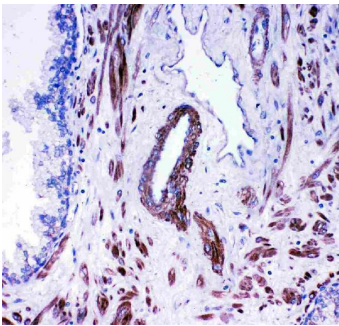
Immunogen	A synthetic peptide corresponding to a sequence in the middle region of human Angiotensin Converting Enzyme 1.
Recommended Detection Systems	Boster recommends Enhanced Chemiluminescent Kit with anti-Rabbit IgG (EK1002) for Western blot, and HRP Conjugated anti-Rabbit IgG Super Vision Assay Kit (SV0002-1) for IHC(P).

Cross Reactivity	No cross-reactivity with other proteins
Isotype	Rabbit IgG
Form	Lyophilized
Concentration	Adding 0.2 ml of distilled water will yield a concentration of 500 ug/ml.
Purification	Immunogen affinity purified.
Suggested Dilutions	Immunohistochemistry (Paraffin-embedded Section), 0.5-1ug/ml, Human Western blot, 0.1-0.5ug/ml, Human

## Anti-Angiotensin Converting Enzyme 1/ACE Antibody Picoband® (PA2196-1) Images



Anti-ACE antibody, PA2196-1, IHC(P)IHC(P): Human Placenta Tissue



Anti-ACE antibody, PA2196-1, IHC(P)IHC(P): Human Prostatic Cancer Tissue



Anti-ACE antibody, PA2196-1, Western blotting  
All lanes: Anti Angiotensin Converting Enzyme 1 (PA2196-1) at 0.5ug/ml  
Lane 1: HELA Whole Cell Lysate at 40ug  
Lane 2: A549 Whole Cell Lysate at 40ug  
Lane 3: 22RV1 Whole Cell Lysate at 40ug  
Predicted bind size: 150KD  
Observed bind size: 150KD

## 1 Publications Citing This Product

1. PubMed ID: 28765966, Aliskiren has chondroprotective efficacy in a rat model of osteoarthritis through suppression of the local renin-angiotensin system

Visit [bosterbio.com/anti-angiotensin-converting-enzyme-1-antibody-pa2196-1-boster.html](http://bosterbio.com/anti-angiotensin-converting-enzyme-1-antibody-pa2196-1-boster.html) to see all 1 publications.

## Submit a product review to Biocompare.com

Submit a review of this product to Biocompare.com to receive a \$20 Amazon.com giftcard! Your reviews help your fellow scientists make the right decisions. Thank you for your contribution.



Anti-Angiotensin Converting Enzyme 1/ACE Antibody

For Research Use Only. Not for use in diagnostic procedures.