

Anti-LI-Cadherin-17 CDH17-Antibody Picoband®

Catalog Number: PA2200

About CDH17

Cadherin-17, also known as HPT1 or CDH16 is a protein that in humans is encoded by the CDH17 gene. By somatic cell hybrid analysis and fluorescence in situ hybridization, CDH17 gene is mapped to 8q22.1. This gene is a member of the cadherin superfamily, genes encoding calcium-dependent, membrane-associated glycoproteins. The encoded protein is cadherin-like, consisting of an extracellular region, containing 7 cadherin domains, and a transmembrane region but lacking the conserved cytoplasmic domain. The protein is a component of the gastrointestinal tract and pancreatic ducts, acting as an intestinal proton-dependent peptide transporter in the first step in oral absorption of many medically important peptide-based drugs. The protein may also play a role in the morphological organization of liver and intestine.

Overview

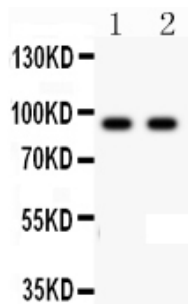
Product Name	Anti-LI-Cadherin-17 CDH17-Antibody Picoband®
Reactive Species	Human
Description	Boster Bio Anti-LI-Cadherin-17 CDH17-Antibody catalog # PA2200. Tested in WB applications. This antibody reacts with Human. The brand Picoband indicates this is a premium antibody that guarantees superior quality, high affinity, and strong signals with minimal background in Western blot applications. Only our best-performing antibodies are designated as Picoband, ensuring unmatched performance.
Application	WB
Clonality	Polyclonal
Formulation	Each vial contains antibody formulated with stabilizing components, 0.9mg NaCl, 0.2mg Na ₂ HPO ₄ , 0.05mg Thimerosal, 0.05mg NaN ₃ . *This antibody is supplied in a stabilized formulation. Compatibility with conjugation reactions depends on the chemistry of the conjugation method used. For conjugation methods that are not compatible with the stabilizing components present in this formulation, a carrier-free antibody format is required.
Storage Instructions	Store at -20°C for one year from date of receipt. After reconstitution, at 4°C for one month. It can also be aliquotted and stored frozen at -20°C for six months. Avoid repeated freeze-thaw cycles.
Host	Rabbit
Uniprot ID	Q12864

Technical Details

Immunogen	A synthetic peptide corresponding to a sequence at the C-terminus of human LI Cadherin.
Recommended Detection Systems	Boster recommends Enhanced Chemiluminescent Kit with anti-Rabbit IgG (EK1002) for Western blot.

Cross Reactivity	No cross-reactivity with other proteins
Isotype	Rabbit IgG
Form	Lyophilized
Concentration	Adding 0.2 ml of distilled water will yield a concentration of 500 ug/ml.
Purification	Immunogen affinity purified.
Suggested Dilutions	Western blot, 0.1-0.5ug/ml, Human

Anti-LI-Cadherin-17 CDH17-Antibody Picoband® (PA2200) Images



Anti-CDH17 antibody, PA2200, Western blotting
All lanes:
Anti CDH17(PA2200) at 0.5ug/ml
Lane 1: HELA Whole Cell Lysate at 40ug
Lane 2: SW620 Whole Cell Lysate at 40ug
Predicted bind size: 92KD
Observed bind size: 92KD

Submit a product review to Biocompare.com

Submit a review of this product to Biocompare.com to receive a \$20 Amazon.com giftcard! Your reviews help your fellow scientists make the right decisions. Thank you for your contribution.



Anti-LI-Cadherin-17 CDH17-Antibody

For Research Use Only. Not for use in diagnostic procedures.