

## Anti-Sumo 1/SUMO1 Antibody Picoband®

Catalog Number: PA2220

### About SUMO1

Small ubiquitin-related modifier 1 (SUMO1), also called SMT3C or PIC1 is a protein that in humans is encoded by the SUMO1 gene. This gene is mapped to 2q33.1. This gene encodes a protein that is a member of the SUMO (small ubiquitin-like modifier) protein family. It functions in a manner similar to ubiquitin in that it is bound to target proteins as part of a post-translational modification system. However, unlike ubiquitin which targets proteins for degradation, this protein is involved in a variety of cellular processes, such as nuclear transport, transcriptional regulation, apoptosis, and protein stability. It is not active until the last four amino acids of the carboxy-terminus have been cleaved off. Several pseudogenes have been reported for this gene.

### Overview

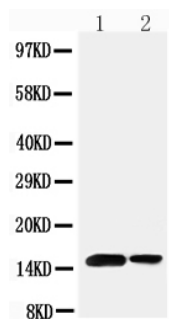
Product Name	Anti-Sumo 1/SUMO1 Antibody Picoband®
Reactive Species	Human, Mouse, Rat
Description	Boster Bio Anti-Sumo 1/SUMO1 Antibody catalog # PA2220. Tested in WB applications. This antibody reacts with Human, Mouse, Rat. The brand Picoband indicates this is a premium antibody that guarantees superior quality, high affinity, and strong signals with minimal background in Western blot applications. Only our best-performing antibodies are designated as Picoband, ensuring unmatched performance.
Application	WB
Clonality	Polyclonal
Formulation	Each vial contains antibody formulated with stabilizing components, 0.9mg NaCl, 0.2mg Na <sub>2</sub> HPO <sub>4</sub> , 0.05mg Thimerosal, 0.05mg NaN <sub>3</sub> . *This antibody is supplied in a stabilized formulation. Compatibility with conjugation reactions depends on the chemistry of the conjugation method used. For conjugation methods that are not compatible with the stabilizing components present in this formulation, a carrier-free antibody format is required.
Storage Instructions	Store at -20°C for one year from date of receipt. After reconstitution, at 4°C for one month. It can also be aliquotted and stored frozen at -20°C for six months. Avoid repeated freeze-thaw cycles.
Host	Rabbit
Uniprot ID	P63165

### Technical Details

Immunogen	A synthetic peptide corresponding to a sequence at the N-terminus of human Sumo 1, identical to the related mouse and rat sequences.
Recommended Detection Systems	Boster recommends Enhanced Chemiluminescent Kit with anti-Rabbit IgG (EK1002) for Western blot.

Cross Reactivity	No cross-reactivity with other proteins
Isotype	Rabbit IgG
Form	Lyophilized
Concentration	Adding 0.2 ml of distilled water will yield a concentration of 500 ug/ml.
Purification	Immunogen affinity purified.
Suggested Dilutions	Western blot, 0.1-0.5ug/ml, Human, Rat, Mouse

## Anti-Sumo 1/SUMO1 Antibody Picoband® (PA2220) Images



Anti-Sumo 1 antibody, PA2220, Western blotting  
Lane 1: Rat Spleen Tissue Lysate  
Lane 2: Human Placenta Tissue Lysate

## 1 Publications Citing This Product

1. PubMed ID: 26493771, The SUMO Protease SENP3 Orchestrates G2-M Transition and Spindle Assembly in Mouse Oocytes

Visit [bosterbio.com/anti-sumo-1-antibody-pa2220-boster.html](http://bosterbio.com/anti-sumo-1-antibody-pa2220-boster.html) to see all 1 publications.

## Submit a product review to Biocompare.com

Submit a review of this product to Biocompare.com to receive a \$20 Amazon.com giftcard! Your reviews help your fellow scientists make the right decisions. Thank you for your contribution.



Anti-Sumo 1/SUMO1 Antibody

For Research Use Only. Not for use in diagnostic procedures.