

Anti-Phospholipid transfer protein PLTP Antibody Picoband®

Catalog Number: PA2228

About PLTP

Phospholipid transfer protein (PLTP), also known as lipid transfer protein II is a protein that in humans is encoded by the PLTP gene. This gene is mapped to 20q13.12. The protein encoded by this gene is one of at least two lipid transfer proteins found in human plasma. The encoded protein transfers phospholipids from triglyceride-rich lipoproteins to high density lipoprotein (HDL). In addition to regulating the size of HDL particles, this protein may be involved in cholesterol metabolism. At least two transcript variants encoding different isoforms have been found for this gene.

Overview

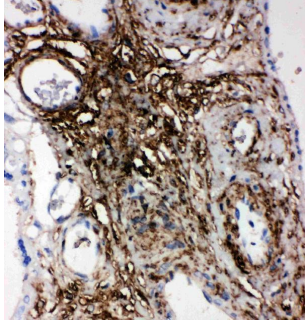
Product Name	Anti-Phospholipid transfer protein PLTP Antibody Picoband®
Reactive Species	Human
Description	Boster Bio Anti-Phospholipid transfer protein PLTP Antibody catalog # PA2228. Tested in IHC, WB applications. This antibody reacts with Human. The brand Picoband indicates this is a premium antibody that guarantees superior quality, high affinity, and strong signals with minimal background in Western blot applications. Only our best-performing antibodies are designated as Picoband, ensuring unmatched performance.
Application	IHC, WB
Clonality	Polyclonal
Formulation	Each vial contains antibody formulated with stabilizing components, 0.9mg NaCl, 0.2mg Na ₂ HPO ₄ , 0.05mg Thimerosal, 0.05mg NaN ₃ . *This antibody is supplied in a stabilized formulation. Compatibility with conjugation reactions depends on the chemistry of the conjugation method used. For conjugation methods that are not compatible with the stabilizing components present in this formulation, a carrier-free antibody format is required.
Storage Instructions	Store at -20°C for one year from date of receipt. After reconstitution, at 4°C for one month. It can also be aliquotted and stored frozen at -20°C for six months. Avoid repeated freeze-thaw cycles.
Host	Rabbit
Uniprot ID	P55058

Technical Details

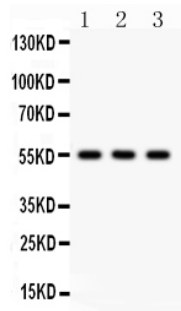
Immunogen	A synthetic peptide corresponding to a sequence in the middle region of human PLTP.
Recommended Detection Systems	Boster recommends Enhanced Chemiluminescent Kit with anti-Rabbit IgG (EK1002) for Western blot, and HRP Conjugated anti-Rabbit IgG Super Vision Assay Kit (SV0002-1) for IHC(P).
Cross Reactivity	No cross-reactivity with other proteins
Isotype	Rabbit IgG

Form	Lyophilized
Concentration	Adding 0.2 ml of distilled water will yield a concentration of 500 ug/ml.
Purification	Immunogen affinity purified.
Suggested Dilutions	Immunohistochemistry (Paraffin-embedded Section), 0.5-1ug/ml, Human Western blot, 0.1-0.5ug/ml, Human

Anti-Phospholipid transfer protein PLTP Antibody Picoband® (PA2228) Images



Anti-PLTP antibody, PA2228, IHC(P)IHC(P): Human Placenta Tissue



Anti-PLTP antibody, PA2228, Western blotting
All lanes: Anti PLTP (PA2228) at 0.5ug/ml
Lane 1: MCF-7 Whole Cell Lysate at 40ug
Lane 2: RAJI Whole Cell Lysate at 40ug
Lane 3: HELA Whole Cell Lysate at 40ug
Predicted bind size: 55KD
Observed bind size: 55KD

Submit a product review to [Biocompare.com](https://www.biocompare.com)

Submit a review of this product to [Biocompare.com](https://www.biocompare.com) to receive a \$20 Amazon.com giftcard! Your reviews help your fellow scientists make the right decisions. Thank you for your contribution.



Anti-Phospholipid transfer protein PLTP Antibody

For Research Use Only. Not for use in diagnostic procedures.