

## Anti-Cortisol Binding Globulin/SERPINA6 Antibody

Catalog Number: PA2230

### About SERPINA6

Corticosteroid-binding globulin (CBG), also known as Serpin A6 is a protein that in humans is encoded by the SERPINA6 gene. It is mapped 14q32.13. This gene encodes an alpha-globulin protein with corticosteroid-binding properties. This is the major transport protein for glucocorticoids and progestins in the blood of most vertebrates. The gene localizes to a chromosomal region containing several closely related serine protease inhibitors which may have evolved by duplication events.

### Overview

Product Name	Anti-Cortisol Binding Globulin/SERPINA6 Antibody
Reactive Species	Human
Description	Boster Bio Anti-Cortisol Binding Globulin/SERPINA6 Antibody catalog # PA2230. Tested in IHC, ICC, WB applications. This antibody reacts with Human.
Application	IHC, ICC, WB
Clonality	Polyclonal
Formulation	Each vial contains 5mg BSA, 0.9mg NaCl, 0.2mg Na2HPO4, 0.05mg Thimerosal, 0.05mg NaN3.
Storage Instructions	Store at -20°C for one year from date of receipt. After reconstitution, at 4°C for one month. It can also be aliquotted and stored frozen at -20°C for six months. Avoid repeated freeze-thaw cycles.
Host	Rabbit
Uniprot ID	P08185

### Technical Details

Immunogen	A synthetic peptide corresponding to a sequence at the N-terminus of human Cortisol Binding Globulin.
Predicted Reactive Species	Bovine
Recommended Detection Systems	Boster recommends Enhanced Chemiluminescent Kit with anti-Rabbit IgG (EK1002) for Western blot, and HRP Conjugated anti-Rabbit IgG Super Vision Assay Kit (SV0002-1) for IHC(P) and ICC.
Cross Reactivity	No cross-reactivity with other proteins
Isotype	Rabbit IgG
Form	Lyophilized
Concentration	Adding 0.2 ml of distilled water will yield a concentration of 500 ug/ml.

Purification	Immunogen affinity purified.
Suggested Dilutions	<p>Dilute the sample so that the expected range of concentrations fall within the detection range of this kit.</p> <p>If the expected range of concentration is unknown, a pilot test should be conducted to decide the optimal dilution ratio for your samples.</p> <p>Some PubMed article(s) citing the expression level of this target are as follows:</p> <p>Boster Bio's internal QC testing used:</p> <p>Immunocytochemistry , 0.5-1ug/ml, Human</p> <p>Immunohistochemistry (Paraffin-embedded Section), 0.5-1ug/ml, Human, By Heat</p> <p>Western blot, 0.1-0.5ug/ml, Human</p>

## Anti-Cortisol Binding Globulin/SERPINA6 Antibody (PA2230) Images

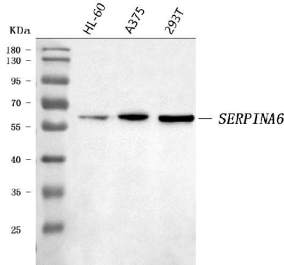


Figure 1. Western blot analysis of Cortisol Binding Globulin using anti-Cortisol Binding Globulin antibody (PA2230). Electrophoresis was performed on a 5-20% SDS-PAGE gel at 70V (Stacking gel) / 90V (Resolving gel) for 2-3 hours. The sample well of each lane was loaded with 30 ug of sample under reducing conditions.

Lane 1: human HL-60 whole cell lysates,

Lane 2: human A375 whole cell lysates,

Lane 3: human 293T whole cell lysates.

After electrophoresis, proteins were transferred to a nitrocellulose membrane at 150 mA for 50-90 minutes. Blocked the membrane with 5% non-fat milk/TBS for 1.5 hour at RT. The membrane was incubated with rabbit anti-Cortisol Binding Globulin antigen affinity purified polyclonal antibody (Catalog # PA2230) at 0.5 ug/mL overnight at 4°C, then washed with TBS-0.1%Tween 3 times with 5 minutes each and probed with a goat anti-rabbit IgG-HRP secondary antibody at a dilution of 1:5000 for 1.5 hour at RT. The signal is developed using an Enhanced Chemiluminescent detection (ECL) kit (Catalog # EK1002) with Tanon 5200 system. A specific band was detected for Cortisol Binding Globulin at approximately 60 kDa. The expected band size for Cortisol Binding Globulin is at 53 kDa.

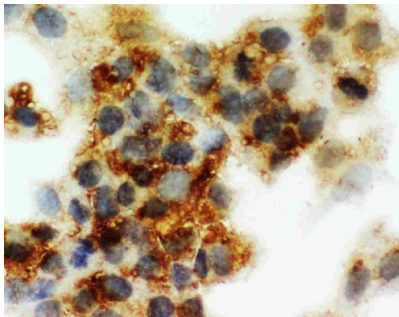


Figure 2. ICC analysis of Cortisol Binding Globulin using anti-Cortisol Binding Globulin antibody (PA2230).

Cortisol Binding Globulin was detected in an immunocytochemical section of HepG2 cells. Enzyme antigen retrieval was performed using IHC enzyme antigen retrieval reagent (AR0022) for 15 mins. The cells were blocked with 10% goat serum. And then incubated with 1 ug/ml rabbit anti-Cortisol Binding Globulin Antibody (PA2230) overnight at 4°C. Biotinylated goat anti-rabbit IgG was used as secondary antibody and incubated for 30 minutes at 37°C. The section was developed using Streptavidin-Biotin-Complex (SABC)(Catalog # SA1022) with DAB as the chromogen.

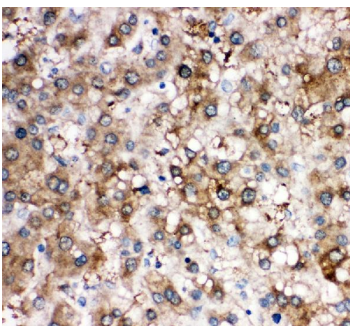


Figure 3. IHC analysis of Cortisol Binding Globulin using anti-Cortisol Binding Globulin antibody (PA2230).

Cortisol Binding Globulin was detected in paraffin-embedded section of human liver cancer tissue. Heat mediated antigen retrieval was performed in citrate buffer (pH6, epitope retrieval solution) for 20 mins. The tissue section was blocked with 10% goat serum. The tissue section was then incubated with 1ug/ml rabbit anti-Cortisol Binding Globulin Antibody (PA2230) overnight at 4°C. Biotinylated goat anti-rabbit IgG was used as secondary antibody and incubated for 30 minutes at 37°C. The tissue section was developed using Streptavidin-Biotin-Complex (SABC)(Catalog # SA1022) with DAB as the chromogen.

## Submit a product review to Biocompare.com

Submit a review of this product to Biocompare.com to receive a \$20 Amazon.com giftcard! Your reviews help your fellow scientists make the right decisions. Thank you for your contribution.



Anti-Cortisol Binding Globulin/SERPINA6 Antibody