

Anti-G-protein coupled receptor 30/GPER1 Antibody Picoband®

Catalog Number: PA2235

About GPER1

G-protein coupled estrogen receptor 1 (GPER1), also known as the GPR30 or CEPR is a G protein-coupled receptor that in humans is encoded by the GPER gene. This gene is a member of the G-protein coupled receptor 1 family and encodes a multi-pass membrane protein that localizes to the endoplasmic reticulum. It is mapped to 7p22.3. The protein binds estrogen, resulting in intracellular calcium mobilization and synthesis of phosphatidylinositol 3,4,5-trisphosphate in the nucleus. This protein therefore plays a role in the rapid nongenomic signaling events widely observed following stimulation of cells and tissues with estrogen. Alternate transcriptional splice variants which encode the same protein have been characterized.

Overview

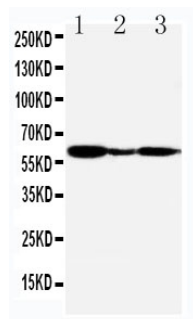
| | |
|----------------------|---|
| Product Name | Anti-G-protein coupled receptor 30/GPER1 Antibody Picoband® |
| Reactive Species | Human, Monkey |
| Description | Boster Bio Anti-G-protein coupled receptor 30/GPER1 Antibody catalog # PA2235. Tested in WB applications. This antibody reacts with Human, Monkey. The brand Picoband indicates this is a premium antibody that guarantees superior quality, high affinity, and strong signals with minimal background in Western blot applications. Only our best-performing antibodies are designated as Picoband, ensuring unmatched performance. |
| Application | WB |
| Clonality | Polyclonal |
| Formulation | Each vial contains antibody formulated with stabilizing components, 0.9mg NaCl, 0.2mg Na ₂ HPO ₄ , 0.05mg Thimerosal, 0.05mg NaN ₃ . *This antibody is supplied in a stabilized formulation. Compatibility with conjugation reactions depends on the chemistry of the conjugation method used. For conjugation methods that are not compatible with the stabilizing components present in this formulation, a carrier-free antibody format is required. |
| Storage Instructions | Store at -20°C for one year from date of receipt. After reconstitution, at 4°C for one month. It can also be aliquotted and stored frozen at -20°C for six months. Avoid repeated freeze-thaw cycles. |
| Host | Rabbit |
| Uniprot ID | Q99527 |

Technical Details

| | |
|-------------------------------|--|
| Immunogen | A synthetic peptide corresponding to a sequence at the C-terminus of human G-protein coupled receptor 30, different from the related mouse sequence by one amino acid, and from the related rat sequence by two amino acids. |
| Recommended Detection Systems | Boster recommends Enhanced Chemiluminescent Kit with anti-Rabbit IgG (EK1002) for Western |

| | |
|---------------------|---|
| | blot. |
| Cross Reactivity | No cross-reactivity with other proteins |
| Isotype | Rabbit IgG |
| Form | Lyophilized |
| Concentration | Adding 0.2 ml of distilled water will yield a concentration of 500 ug/ml. |
| Purification | Immunogen affinity purified. |
| Suggested Dilutions | Western blot, 0.1-0.5ug/ml, Human, Monkey |

Anti-G-protein coupled receptor 30/GPER1 Antibody Picoband® (PA2235) Images



Anti-G-protein coupled receptor 30 antibody, PA2235,
Western blotting Lane 1: COLO320 Cell Lysate Lane 2: MCF-7
Cell Lysate Lane 3: COS7 Cell Lysate

Submit a product review to Biocompare.com

Submit a review of this product to Biocompare.com to receive a \$20 Amazon.com giftcard! Your reviews help your fellow scientists make the right decisions. Thank you for your contribution.



Anti-G-protein coupled receptor 30/GPER1 Antibody

For Research Use Only. Not for use in diagnostic procedures.