

## Anti-Securin/PTTG1 Antibody

Catalog Number: PA2240

### About PTTG1

Securin, also known as pituitary tumor-transforming 1 or EAP1 is a protein that in humans is encoded by the PTTG1 gene. PTTG1 gene is mapped to 5q33.3. The encoded protein is a homolog of yeast securin proteins, which prevent separins from promoting sister chromatid separation. It is an anaphase-promoting complex (APC) substrate that associates with a separin until activation of the APC. The gene product has transforming activity in vitro and tumorigenic activity in vivo, and the gene is highly expressed in various tumors. The gene product contains 2 PXXP motifs, which are required for its transforming and tumorigenic activities, as well as for its stimulation of basic fibroblast growth factor expression. It also contains a destruction box (D box) that is required for its degradation by the APC. The acidic C-terminal region of the encoded protein can act as a transactivation domain. The gene product is mainly a cytosolic protein, although it partially localizes in the nucleus.

### Overview

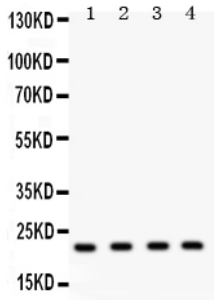
Product Name	Anti-Securin/PTTG1 Antibody
Reactive Species	Human
Description	Boster Bio Anti-Securin/PTTG1 Antibody catalog # PA2240. Tested in WB applications. This antibody reacts with Human.
Application	WB
Clonality	Polyclonal
Formulation	Each vial contains 5mg BSA, 0.9mg NaCl, 0.2mg Na2HPO4, 0.05mg Thimerosal, 0.05mg NaN3.
Storage Instructions	Store at -20°C for one year from date of receipt. After reconstitution, at 4°C for one month. It can also be aliquotted and stored frozen at -20°C for six months. Avoid repeated freeze-thaw cycles.
Host	Rabbit
Uniprot ID	O95997

### Technical Details

Immunogen	A synthetic peptide corresponding to a sequence at the C-terminus of human Securin, different from the related rat sequence by four amino acids, and from the related mouse sequence by five amino acids.
Predicted Reactive Species	Chicken
Recommended Detection Systems	Boster recommends Enhanced Chemiluminescent Kit with anti-Rabbit IgG (EK1002) for Western blot.
Cross Reactivity	No cross-reactivity with other proteins
Isotype	Rabbit IgG

Form	Lyophilized
Concentration	Adding 0.2 ml of distilled water will yield a concentration of 500 ug/ml.
Purification	Immunogen affinity purified.
Suggested Dilutions	<p>Dilute the sample so that the expected range of concentrations fall within the detection range of this kit.</p> <p>If the expected range of concentration is unknown, a pilot test should be conducted to decide the optimal dilution ratio for your samples.</p> <p>Some PubMed article(s) citing the expression level of this target are as follows:</p> <p>Boster Bio's internal QC testing used:</p> <p>Western blot, 0.1-0.5ug/ml, Human</p>

## Anti-Securin/PTTG1 Antibody (PA2240) Images



Anti-Securin antibody, PA2240, Western blotting  
All lanes: Anti PTTG1 (PA2240) at 0.5ug/ml  
Lane 1: HELA Whole Cell Lysate at 40ug  
Lane 2: MCF-7 Whole Cell Lysate at 40ug  
Lane 3: SKOV Whole Cell Lysate at 40ug  
Lane 4: A375 Whole Cell Lysate at 40ug  
Predicted bind size: 22KD  
Observed bind size: 22KD

## 1 Publications Citing This Product

1. PubMed ID: 24879625, Zhang E, Liu S, Xu Z, Huang S, Tan X, Sun C, Lu L. Tumour Biol. 2014 Sep;35(9):8801-11. Doi: 10.1007/S13277-014-2143-2. Epub 2014 May 31. Pituitary Tumor-Transforming Gene 1 (Pttg1) Is Overexpressed In Oral Squamous Cell Carcinoma (Osc) And Promo...

Visit [bosterbio.com/anti-securin-antibody-pa2240-boster.html](http://bosterbio.com/anti-securin-antibody-pa2240-boster.html) to see all 1 publications.

## Submit a product review to Biocompare.com

Submit a review of this product to Biocompare.com to receive a \$20 Amazon.com giftcard! Your reviews help your fellow scientists make the right decisions. Thank you for your contribution.



Anti-Securin/PTTG1 Antibody