

Anti-CAT1/SLC7A1 Antibody Picoband®

Catalog Number: PA2245

About SLC7A1

High affinity cationic amino acid transporter 1, also called solute carrier family 7 (cationic amino acid transporter, γ^+ system), member 1 (SLC7A1) or ATRC1 is a protein that in humans is encoded by the SLC7A1 gene. This gene is mapped to 13q12.3. It acts as a cationic amino acid transporter and as an ecotropic retrovirus receptor and plays a role in the Na^+ -independent γ^+ cationic amino acid transport system. This gene is high-affinity, low capacity permease involved in the transport of the cationic amino acids (arginine, lysine and ornithine) in non-hepatic tissues.

Overview

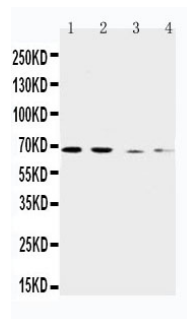
| | |
|----------------------|--|
| Product Name | Anti-CAT1/SLC7A1 Antibody Picoband® |
| Reactive Species | Human |
| Description | Boster Bio Anti-CAT1/SLC7A1 Antibody catalog # PA2245. Tested in WB applications. This antibody reacts with Human. The brand Picoband indicates this is a premium antibody that guarantees superior quality, high affinity, and strong signals with minimal background in Western blot applications. Only our best-performing antibodies are designated as Picoband, ensuring unmatched performance. |
| Application | WB |
| Clonality | Polyclonal |
| Formulation | Each vial contains 4 mg Trehalose, 0.9 mg NaCl and 0.2 mg Na_2HPO_4 . |
| Storage Instructions | Store at -20°C for one year from date of receipt. After reconstitution, at 4°C for one month. It can also be aliquotted and stored frozen at -20°C for six months. Avoid repeated freeze-thaw cycles. |
| Host | Rabbit |
| Uniprot ID | P30825 |

Technical Details

| | |
|-------------------------------|--|
| Immunogen | A synthetic peptide corresponding to a sequence at the C-terminus of human CAT1, different from the related mouse and rat sequences by four amino acids. |
| Recommended Detection Systems | Boster recommends Enhanced Chemiluminescent Kit with anti-Rabbit IgG (EK1002) for Western blot. |
| Cross Reactivity | No cross-reactivity with other proteins |
| Isotype | Rabbit IgG |
| Form | Lyophilized |
| Concentration | Adding 0.2 ml of distilled water will yield a concentration of 500 $\mu\text{g}/\text{ml}$. |

| | |
|---------------------|-----------------------------------|
| Purification | Immunogen affinity purified. |
| Suggested Dilutions | Western blot, 0.1-0.5ug/ml, Human |

Anti-CAT1/SLC7A1 Antibody Picoband® (PA2245) Images



Anti-CAT1 antibody, PA2245, Western blotting
Lane 1: Human Placenta Tissue Lysate
Lane 2: HELA Cell Lysate
Lane 3: SKOV-3 Cell Lysate
Lane 4: HT1080 Cell Lysate

Submit a product review to Biocompare.com

Submit a review of this product to Biocompare.com to receive a \$20 Amazon.com giftcard! Your reviews help your fellow scientists make the right decisions. Thank you for your contribution.



Anti-CAT1/SLC7A1 Antibody

For Research Use Only. Not for use in diagnostic procedures.