

Anti-Toll-like receptor 1 TLR1 Antibody Picoband®

Catalog Number: PA2246

About TLR1

Toll-like receptor 1 (TLR1), also called TIL or CD281 is a member of the Toll-like receptor family (TLR) of pattern recognition receptors of the innate immune system. This gene is mapped to 4p14 by fluorescence in situ hybridization. TLRs are highly conserved from *Drosophila* to humans and share structural and functional similarities. They recognize pathogen-associated molecular patterns (PAMPs) that are expressed on infectious agents, and mediate the production of cytokines necessary for the development of effective immunity. The various TLRs exhibit different patterns of expression. This gene is ubiquitously expressed, and at higher levels than other TLR genes. Different length transcripts presumably resulting from use of alternative polyadenylation site, and/or from alternative splicing, have been noted for this gene.

Overview

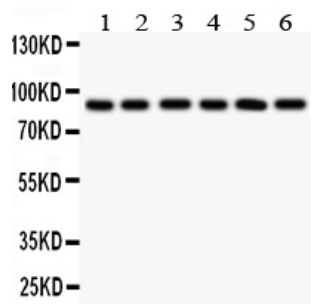
Product Name	Anti-Toll-like receptor 1 TLR1 Antibody Picoband®
Reactive Species	Human
Description	Boster Bio Anti-Toll-like receptor 1 TLR1 Antibody catalog # PA2246. Tested in WB applications. This antibody reacts with Human. The brand Picoband indicates this is a premium antibody that guarantees superior quality, high affinity, and strong signals with minimal background in Western blot applications. Only our best-performing antibodies are designated as Picoband, ensuring unmatched performance.
Application	WB
Clonality	Polyclonal
Formulation	Each vial contains antibody formulated with stabilizing components, 0.9mg NaCl, 0.2mg Na ₂ HPO ₄ , 0.05mg Thimerosal, 0.05mg NaN ₃ . *This antibody is supplied in a stabilized formulation. Compatibility with conjugation reactions depends on the chemistry of the conjugation method used. For conjugation methods that are not compatible with the stabilizing components present in this formulation, a carrier-free antibody format is required.
Storage Instructions	Store at -20°C for one year from date of receipt. After reconstitution, at 4°C for one month. It can also be aliquotted and stored frozen at -20°C for six months. Avoid repeated freeze-thaw cycles.
Host	Rabbit
Uniprot ID	Q15399

Technical Details

Immunogen	A synthetic peptide corresponding to a sequence at the C-terminus of human TLR1.
Recommended Detection Systems	Boster recommends Enhanced Chemiluminescent Kit with anti-Rabbit IgG (EK1002) for Western blot.

Cross Reactivity	No cross-reactivity with other proteins
Isotype	Rabbit IgG
Form	Lyophilized
Concentration	Adding 0.2 ml of distilled water will yield a concentration of 500 ug/ml.
Purification	Immunogen affinity purified.
Suggested Dilutions	Western blot, 0.1-0.5ug/ml, Human

Anti-Toll-like receptor 1 TLR1 Antibody Picoband® (PA2246) Images



Anti-TLR1 antibody, PA2246, Western blotting
All lanes: Anti TLR1 (PA2246) at 0.5ug/ml
Lane 1: COLO320 Whole Cell Lysate at 40ug
Lane 2: SW620 Whole Cell Lysate at 40ug
Lane 3: SKOV Whole Cell Lysate at 40ug
Lane 4: JURKAT Whole Cell Lysate at 40ug
Lane 5: CEM Whole Cell Lysate at 40ug
Lane 6: PANC Whole Cell Lysate at 40ug
Predicted bind size: 90KD
Observed bind size: 90KD

Submit a product review to Biocompare.com

Submit a review of this product to Biocompare.com to receive a \$20 Amazon.com giftcard! Your reviews help your fellow scientists make the right decisions. Thank you for your contribution.



Anti-Toll-like receptor 1 TLR1 Antibody

For Research Use Only. Not for use in diagnostic procedures.