

Anti-Insulin receptor substrate 1 IRS1 Antibody Picoband®

Catalog Number: PA2269

About Irs1

Insulin receptor substrate 1 (IRS-1) is a signalling adapter protein that in humans is encoded by the IRS-1 gene. It is mapped to 2q36.3. This gene exhibited no intrinsic enzyme activity, and it can serve as a docking protein involved in binding and activating other signal transduction molecules after being phosphorylated on tyrosine by insulin receptor kinase. IRS1 plays a key role in transmitting signals from the insulin and insulin-like growth factor-1 (IGF-1) receptors to intracellular pathways PI3K/Akt and Erk MAP kinase pathways. IRS1 also plays important biological function for both metabolic and mitogenic (growth promoting) pathways. In addition to those, IRS1 is a key regulator of PI3K within malignant cells.

Overview

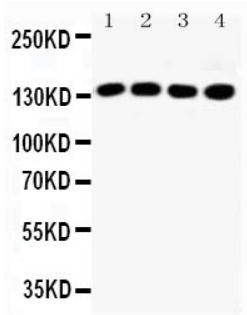
Product Name	Anti-Insulin receptor substrate 1 IRS1 Antibody Picoband®
Reactive Species	Human, Mouse, Rat
Description	Boster Bio Anti-Insulin receptor substrate 1 IRS1 Antibody catalog # PA2269. Tested in WB applications. This antibody reacts with Human, Mouse, Rat. The brand Picoband indicates this is a premium antibody that guarantees superior quality, high affinity, and strong signals with minimal background in Western blot applications. Only our best-performing antibodies are designated as Picoband, ensuring unmatched performance.
Application	WB
Clonality	Polyclonal
Formulation	Each vial contains antibody formulated with stabilizing components, 0.9mg NaCl, 0.2mg Na ₂ HPO ₄ , 0.05mg Thimerosal, 0.05mg NaN ₃ . *This antibody is supplied in a stabilized formulation. Compatibility with conjugation reactions depends on the chemistry of the conjugation method used. For conjugation methods that are not compatible with the stabilizing components present in this formulation, a carrier-free antibody format is required.
Storage Instructions	Store at -20°C for one year from date of receipt. After reconstitution, at 4°C for one month. It can also be aliquotted and stored frozen at -20°C for six months. Avoid repeated freeze-thaw cycles.
Host	Rabbit
Uniprot ID	P35569

Technical Details

Immunogen	A synthetic peptide corresponding to a sequence at the N-terminus of mouse IRS1, identical to the related rat sequence, and different from the related human sequence by one amino acid.
Recommended Detection Systems	Boster recommends Enhanced Chemiluminescent Kit with anti-Rabbit IgG (EK1002) for Western blot.
Cross Reactivity	No cross-reactivity with other proteins

Isotype	Rabbit IgG
Form	Lyophilized
Concentration	Adding 0.2 ml of distilled water will yield a concentration of 500 ug/ml.
Purification	Immunogen affinity purified.
Suggested Dilutions	Western blot, 0.1-0.5ug/ml, Human, Mouse, Rat

Anti-Insulin receptor substrate 1 IRS1 Antibody Picoband® (PA2269) Images



Anti-IRS1 antibody, PA2269, All Western blotting All lanes:
Anti-IRS1(PA2269) at 0.5ug/ml Lane 1: HELA Whole Cell
Lysate at 40ug Lane 2: A549 Whole Cell Lysate at 40ug Lane
3: 293T Whole Cell Lysate at 40ug Lane 4: MCF-7 Whole Cell
Lysate at 40ug Predicted bind size: 132KD Observed bind
size: 132KD

2 Publications Citing This Product

1. PubMed ID: 10.1016/j.anireprosci.2019.05.006, Effect of maternal feed restriction in dairy goats at different stages of gestation on skeletal muscle development and energy metabolism of kids at the time of births
2. PubMed ID: 25536154, Mi L, Chen Y, Zheng X, Li Y, Zhang Q, Mo D, Yang G. J Cell Biochem. 2015 Jul;116(7):1195-204. Doi: 10.1002/Jcb.25065. Microrna-139-5P Suppresses 3T3-L1 Preadipocyte Differentiation Through Notch And Irs1/Pi3K/Akt Insulin Signaling Pathways.

Visit bosterbio.com/anti-irs1-antibody-pa2269-boster.html to see all 2 publications.

Submit a product review to Biocompare.com

Submit a review of this product to Biocompare.com to receive a \$20 Amazon.com giftcard! Your reviews help your fellow scientists make the right decisions. Thank you for your contribution.



Anti-Insulin receptor substrate 1 IRS1 Antibody

For Research Use Only. Not for use in diagnostic procedures.