

Anti-MEK2/MAP2K2 Antibody Picoband®

Catalog Number: PA2274

About MAP2K2

Dual specificity mitogen-activated protein kinase kinase 2 (MAP2K2), also called PRKMK2 or MEK2, is an enzyme that in humans is encoded by the MAP2K2 gene. The protein encoded by this gene is a dual specificity protein kinase that belongs to the MAP kinase kinase family. MAP2K2 is mapped to 19p13.3. This kinase is known to play a critical role in mitogen growth factor signal transduction, and the inhibition or degradation of this kinase is found to be involved in the pathogenesis of Yersinia and anthrax. Recombinant MEK2 and MEK1 both could activate human ERK1 in vitro, and they further characterized biochemically the 2 MAP2Ks. MAP2K2 has been shown to interact with MAPK3 and ARAF.

Overview

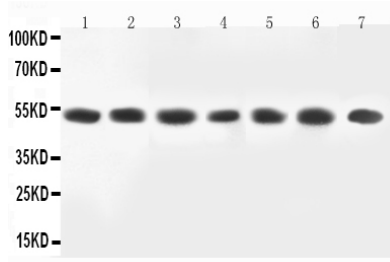
Product Name	Anti-MEK2/MAP2K2 Antibody Picoband®
Reactive Species	Human, Mouse, Rat
Description	Boster Bio Anti-MEK2/MAP2K2 Antibody catalog # PA2274. Tested in WB applications. This antibody reacts with Human, Mouse, Rat. The brand Picoband indicates this is a premium antibody that guarantees superior quality, high affinity, and strong signals with minimal background in Western blot applications. Only our best-performing antibodies are designated as Picoband, ensuring unmatched performance.
Application	WB
Clonality	Polyclonal
Formulation	Each vial contains antibody formulated with stabilizing components, 0.9mg NaCl, 0.2mg Na ₂ HPO ₄ , 0.05mg Thimerosal, 0.05mg NaN ₃ . *This antibody is supplied in a stabilized formulation. Compatibility with conjugation reactions depends on the chemistry of the conjugation method used. For conjugation methods that are not compatible with the stabilizing components present in this formulation, a carrier-free antibody format is required.
Storage Instructions	Store at -20°C for one year from date of receipt. After reconstitution, at 4°C for one month. It can also be aliquotted and stored frozen at -20°C for six months. Avoid repeated freeze-thaw cycles.
Host	Rabbit
Uniprot ID	P36507

Technical Details

Immunogen	A synthetic peptide corresponding to a sequence at the N-terminus of human MEK2, identical to the related mouse and rat sequences.
Recommended Detection Systems	Boster recommends Enhanced Chemiluminescent Kit with anti-Rabbit IgG (EK1002) for Western blot.
Cross Reactivity	No cross-reactivity with other proteins

Isotype	Rabbit IgG
Form	Lyophilized
Concentration	Adding 0.2 ml of distilled water will yield a concentration of 500 ug/ml.
Purification	Immunogen affinity purified.
Suggested Dilutions	Western blot, 0.1-0.5ug/ml, Human, Rat, Mouse

Anti-MEK2/MAP2K2 Antibody Picoband® (PA2274) Images



Anti-MEK2 antibody, PA2274, All Western blotting
All lanes: MAP2K2(PA2274) at 0.5ug/ml
Lane 1: Rat Skeletal Muscle Tissue Lysate at 40ug
Lane 2: Rat Kidney Tissue Lysate at 40ug
Lane 3: HELA Whole Cell Lysate at 40ug
Lane 4: COLO320 Whole Cell Lysate at 40ug
Lane 5: PC12 Whole Cell Lysate at 40ug
Lane 6: JURKAT Whole Cell Lysate at 40ug
Lane 7: HT1080 Whole Cell Lysate at 40ug
Predicted bind size: 50KD
Observed bind size: 50KD

Submit a product review to Biocompare.com

Submit a review of this product to Biocompare.com to receive a \$20 Amazon.com giftcard! Your reviews help your fellow scientists make the right decisions. Thank you for your contribution.



Anti-MEK2/MAP2K2 Antibody

For Research Use Only. Not for use in diagnostic procedures.