

Anti-Ras-related protein Rab-8A RAB8A Antibody Picoband®

Catalog Number: PA2280

About RAB8A

Ras-related protein Rab-8A is a protein that in humans is encoded by the RAB8A gene. It is mapped to 19p13.12. The protein encoded by this gene is a member of the RAS superfamily which are small GTP/GDP-binding proteins with an average size of 200 amino acids. The RAS-related proteins of the RAB/YPT family may play a role in the transport of proteins from the endoplasmic reticulum to the Golgi and the plasma membrane. RAB8A regulates cilia assembly by targeting and promoting fusion of vesicles near the ciliary membrane. This gene requires CEP290 for centrosome localization and that CEP290 regulates entry of RAB8A into the cilium during assembly of this organelle. RAB8A has been shown to interact with Optineurin and MAP4K2.

Overview

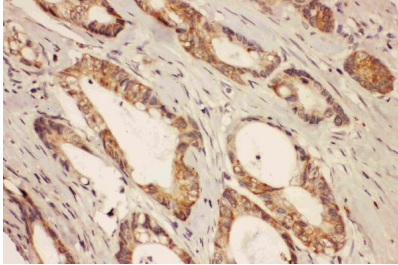
Product Name	Anti-Ras-related protein Rab-8A RAB8A Antibody Picoband®
Reactive Species	Human
Description	Boster Bio Anti-Ras-related protein Rab-8A RAB8A Antibody catalog # PA2280. Tested in IHC, WB applications. This antibody reacts with Human. The brand Picoband indicates this is a premium antibody that guarantees superior quality, high affinity, and strong signals with minimal background in Western blot applications. Only our best-performing antibodies are designated as Picoband, ensuring unmatched performance.
Application	IHC, WB
Clonality	Polyclonal
Formulation	Each vial contains antibody formulated with stabilizing components, 0.9mg NaCl, 0.2mg Na ₂ HPO ₄ , 0.05mg Thimerosal, 0.05mg NaN ₃ . *This antibody is supplied in a stabilized formulation. Compatibility with conjugation reactions depends on the chemistry of the conjugation method used. For conjugation methods that are not compatible with the stabilizing components present in this formulation, a carrier-free antibody format is required.
Storage Instructions	Store at -20°C for one year from date of receipt. After reconstitution, at 4°C for one month. It can also be aliquotted and stored frozen at -20°C for six months. Avoid repeated freeze-thaw cycles.
Host	Rabbit
Uniprot ID	P61006

Technical Details

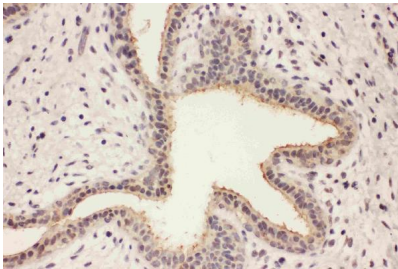
Immunogen	A synthetic peptide corresponding to a sequence at the C-terminus of human RAB8A, identical to the related mouse and rat sequences.
Recommended Detection Systems	Boster recommends Enhanced Chemiluminescent Kit with anti-Rabbit IgG (EK1002) for Western blot, and HRP Conjugated anti-Rabbit IgG Super Vision Assay Kit (SV0002-1) for IHC(P).

Cross Reactivity	No cross-reactivity with other proteins
Isotype	Rabbit IgG
Form	Lyophilized
Concentration	Adding 0.2 ml of distilled water will yield a concentration of 500 ug/ml.
Purification	Immunogen affinity purified.
Suggested Dilutions	Western blot, 0.1-0.5ug/ml, Human Immunohistochemistry (Paraffin-embedded Section), 0.5-1ug/ml, Human

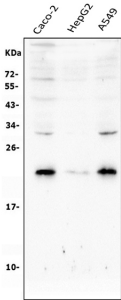
Anti-Ras-related protein Rab-8A RAB8A Antibody Picoband® (PA2280) Images



Anti-RAB8A antibody, PA2280, IHC(P)IHC(P): Human Intestinal Cancer Tissue



Anti-RAB8A antibody, PA2280, IHC(P)IHC(P): Human Mammary Cancer Tissue



Western blot analysis of RAB8A using anti-RAB8A antibody (PA2280). Electrophoresis was performed on a 5-20% SDS-PAGE gel at 70V (Stacking gel) / 90V (Resolving gel) for 2-3 hours. The sample well of each lane was loaded with 50ug of sample under reducing conditions. lane 1: Caco-2 whole cell lysates, lane 2: HepG2 whole cell lysates, lane 3: A549 whole cell lysates. After Electrophoresis, proteins were transferred to a Nitrocellulose membrane at 150mA for 50-90 minutes. Blocked the membrane with 5% Non-fat Milk/TBS for 1.5 hour at RT. The membrane was incubated with rabbit anti-RAB8A antigen affinity purified polyclonal antibody (Catalog # PA2280) at 0.5 ug/mL overnight at 4°C, then washed with TBS-0.1%Tween 3 times with 5 minutes each and probed with a goat anti-rabbit IgG-HRP secondary antibody at a dilution of 1:10000 for 1.5 hour at RT. The signal is developed using an Enhanced Chemiluminescent detection (ECL) kit (Catalog # EK1002) with Tanon 5200 system. A specific band was detected for RAB8A at approximately 24KD. The expected band size for RAB8A is at 24KD.

Submit a product review to [Biocompare.com](https://www.biocompare.com)

Submit a review of this product to [Biocompare.com](https://www.biocompare.com) to receive a \$20 Amazon.com giftcard! Your reviews help your fellow scientists make the right decisions. Thank you for your contribution.



Anti-Ras-related protein Rab-8A RAB8A Antibody

For Research Use Only. Not for use in diagnostic procedures.