

## Anti-Ras-related protein Rab-11A Rab11A Antibody Picoband®

Catalog Number: PA2282

### About RAB11A

Ras-related protein Rab-11A is a protein that in humans is encoded by the RAB11A gene. The protein encoded by this gene belongs to the small GTPase superfamily, Rab family which plays essential roles in vesicle and granule targeting. It is mapped to 15q22.31. RAB11A is associated with both constitutive and regulated secretory pathways, and may be involved in protein transport. RAB11A also can control intracellular trafficking of the innate immune receptor TLR4, and thereby also receptor signaling. It has been shown to interact with RAB11FIP2, RAB11FIP4, RAB11FIP1 and so on.

### Overview

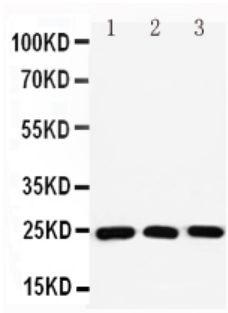
Product Name	Anti-Ras-related protein Rab-11A Rab11A Antibody Picoband®
Reactive Species	Human, Mouse, Rat
Description	Boster Bio Anti-Ras-related protein Rab-11A Rab11A Antibody catalog # PA2282. Tested in IP, WB applications. This antibody reacts with Human, Mouse, Rat. The brand Picoband indicates this is a premium antibody that guarantees superior quality, high affinity, and strong signals with minimal background in Western blot applications. Only our best-performing antibodies are designated as Picoband, ensuring unmatched performance.
Application	IP, WB
Clonality	Polyclonal
Formulation	Each vial contains antibody formulated with stabilizing components, 0.9mg NaCl, 0.2mg Na <sub>2</sub> HPO <sub>4</sub> , 0.05mg Thimerosal, 0.05mg NaN <sub>3</sub> . *This antibody is supplied in a stabilized formulation. Compatibility with conjugation reactions depends on the chemistry of the conjugation method used. For conjugation methods that are not compatible with the stabilizing components present in this formulation, a carrier-free antibody format is required.
Storage Instructions	Store at -20°C for one year from date of receipt. After reconstitution, at 4°C for one month. It can also be aliquotted and stored frozen at -20°C for six months. Avoid repeated freeze-thaw cycles.
Host	Rabbit
Uniprot ID	P62491

### Technical Details

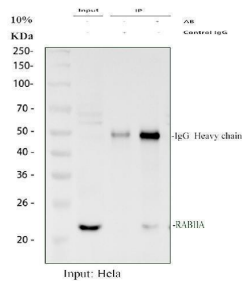
Immunogen	A synthetic peptide corresponding to a sequence at the C-terminus of human Rab11A, identical to the related mouse and rat sequences.
Recommended Detection Systems	Boster recommends Enhanced Chemiluminescent Kit with anti-Rabbit IgG (EK1002) for Western blot.
Cross Reactivity	No cross-reactivity with other proteins

Isotype	Rabbit IgG
Form	Lyophilized
Concentration	Adding 0.2 ml of distilled water will yield a concentration of 500 ug/ml.
Purification	Immunogen affinity purified.
Suggested Dilutions	Western blot, 0.1-0.5ug/ml, Human, Mouse, Rat Immunoprecipitation, 0.5-2 ug/ml, Human

## Anti-Ras-related protein Rab-11A Rab11A Antibody Picoband® (PA2282) Images



Anti-Rab11A antibody, PA2282, All Western blotting All lanes:  
Anti-RAB11A(PA2282) at 0.5ug/ml Lane 1: HELA Whole Cell Lysate at 40ug Lane 2: NIH Whole Cell Lysate at 40ug Lane 3: A431 Whole Cell Lysate at 40ug Predicted bind size: 24KD Observed bind size: 24KD



Immunoprecipitating (IP) Rab11A in HeLa whole cell lysate. Western blot analysis of Rab11A using anti-Rab11A antibody (PA2282); Lane 1: HeLa whole cell lysates (30ug); Lane 2: Rabbit control IgG instead of anti-Rab11A antibody in HeLa whole cell lysate; Lane 3: anti-Rab11A antibody (2ug) + HeLa whole cell lysate (500ug). After electrophoresis, proteins were transferred to a membrane. Then the membrane was incubated with rabbit anti-Rab11A antigen affinity purified polyclonal antibody (PA2282) at a dilution of 0.5 ug/mL and probed with a goat anti-rabbit IgG-HRP secondary antibody (Catalog # BA1054). The signal is developed using ECL Plus Western Blotting Substrate (Catalog # AR1196-200). A specific band was detected for Rab11A at approximately 24 kDa. The expected band size for Rab11A is at 24 kDa.

### Submit a product review to Biocompare.com

Submit a review of this product to Biocompare.com to receive a \$20 Amazon.com giftcard! Your reviews help your fellow scientists make the right decisions. Thank you for your contribution.



Anti-Ras-related protein Rab-11A Rab11A Antibody

For Research Use Only. Not for use in diagnostic procedures.