

Anti-TAB2 Antibody

Catalog Number: PA2289

About TAB2

Mitogen-activated protein kinase kinase kinase 7-interacting protein 2, also known as TAB2, is an enzyme that in humans is encoded by the MAP3K7IP2 gene. The protein encoded by this gene is an activator of MAP3K7/TAK1, which is required for the IL-1 induced activation of nuclear factor kappaB and MAPK8/JNK. This protein forms a kinase complex with TRAF6, MAP3K7 and TAB1, thus serves as an adaptor linking MAP3K7 and TRAF6. TAB2 functionally links TAK1 to TRAF6. What's more, TAB2 can act as a sensor for inflammatory signals by serving as a molecular beacon for recruitment of MEKK1 (MAP3K1), which in turn mediated dismissal of the NCOR/HDAC complex and permitted derepression of AR and estrogen receptor target genes.

Overview

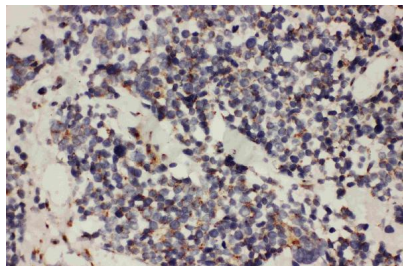
Product Name	Anti-TAB2 Antibody
Reactive Species	Human, Mouse, Rat
Description	Boster Bio Anti-TAB2 Antibody catalog # PA2289. Tested in IHC, WB applications. This antibody reacts with Human, Mouse, Rat.
Application	IHC, WB
Clonality	Polyclonal G9
Formulation	Each vial contains 5mg BSA, 0.9mg NaCl, 0.2mg Na2HPO4, 0.05mg Thimerosal, 0.05mg NaN3.
Storage Instructions	Store at -20°C for one year from date of receipt. After reconstitution, at 4°C for one month. It can also be aliquotted and stored frozen at -20°C for six months. Avoid repeated freeze-thaw cycles.
Host	Rabbit
Uniprot ID	Q9NYJ8

Technical Details

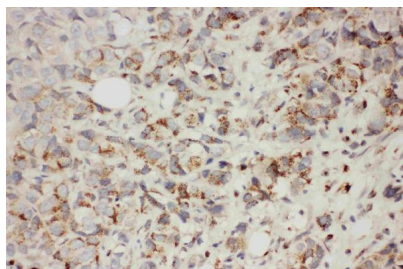
Immunogen	A synthetic peptide corresponding to a sequence at the C-terminus of human TAB2, identical to the related mouse sequence, and different from the related rat sequence by one amino acid.
Predicted Reactive Species	Hamster
Recommended Detection Systems	Boster recommends Enhanced Chemiluminescent Kit with anti-Rabbit IgG (EK1002) for Western blot, and HRP Conjugated anti-Rabbit IgG Super Vision Assay Kit (SV0002-1) for IHC(P).
Cross Reactivity	No cross reactivity with other proteins
Form	Lyophilized
Concentration	Add 0.2ml of distilled water will yield a concentration of 500ug/ml.

Purification	Immunogen affinity purified.
Suggested Dilutions	Immunohistochemistry (Paraffin-embedded Section), 0.5-1ug/ml, Human, Mouse, Rat, By Heat Western blot, 0.1-0.5ug/ml, Human, Mouse, Rat

Anti-TAB2 Antibody (PA2289) Images



Anti-TAB2 antibody, PA2289, IHC(P)IHC(P): Human Lung Cancer Tissue



Anti-TAB2 antibody, PA2289, IHC(P)IHC(P): Human Mammary Cancer Tissue



Anti-TAB2 antibody, PA2289, All Western blotting All lanes:
Anti-TAB2(PA2289) at 0.5ug/ml Lane 1: Mouse Brain Tissue Lysate at 40ug Lane 2: Mouse Testis Tissue Lysate at 40ug Lane 3: Mouse Spleen Tissue Lysate at 40ug Predicted bind size: 76KD Observed bind size: 76KD

Submit a product review to Biocompare.com

Submit a review of this product to Biocompare.com to receive a \$20 Amazon.com giftcard! Your reviews help your fellow scientists make the right decisions. Thank you for your contribution.



Anti-TAB2 Antibody

For Research Use Only. Not for use in diagnostic procedures.