

## Anti-SynCAM/CADM1 Antibody

Catalog Number: PA2294

### About CADM1

Cell adhesion molecule 1 is a protein that, in humans, is encoded by the CADM1 gene. This gene is also known as IGSF4, SYNCAM or TSLC1, and it is mapped to 11q23.3. CADM1 functions as a homophilic cell adhesion molecule at the synapse. Expression of the isolated cytoplasmic tail of CADM1 in neurons inhibited synapse assembly. Conversely, expression of full-length CADM1 in nonneuronal cells induced synapse formation by cocultured hippocampal neurons with normal release properties. CADM1 has been shown to interact with EPB41L3.

### Overview

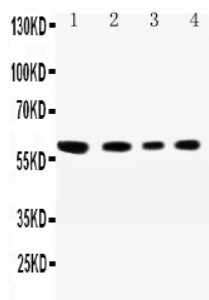
|                      |   |
|----------------------|---|
| Product Name         | Anti-SynCAM/CADM1 Antibody  |
| Reactive Species     | Human, Mouse, Rat   |
| Description          | Boster Bio Anti-SynCAM/CADM1 Antibody catalog # PA2294. Tested in WB applications. This antibody reacts with Human, Mouse, Rat.   |
| Application          | WB  |
| Clonality            | Polyclonal  |
| Formulation          | Each vial contains 5mg BSA, 0.9mg NaCl, 0.2mg Na2HPO4, 0.05mg Thimerosal, 0.05mg NaN3.  |
| Storage Instructions | Store at -20°C for one year from date of receipt. After reconstitution, at 4°C for one month. It can also be aliquotted and stored frozen at -20°C for six months. Avoid repeated freeze-thaw cycles. |
| Host                 | Rabbit  |
| Uniprot ID           | Q9BY67  |

### Technical Details

|                               |  |
|-------------------------------|--|
| Immunogen                     | A synthetic peptide corresponding to a sequence at the N-terminus of human SynCAM, identical to the related mouse and rat sequences. |
| Predicted Reactive Species    | Hamster  |
| Recommended Detection Systems | Boster recommends Enhanced Chemiluminescent Kit with anti-Rabbit IgG (EK1002) for Western blot.                                      |
| Cross Reactivity              | No cross-reactivity with other proteins  |
| Isotype                       | Rabbit IgG   |
| Form                          | Lyophilized  |
| Concentration                 | Adding 0.2 ml of distilled water will yield a concentration of 500 ug/ml.  |

|                     |  |
|---------------------|--|
| Purification        | Immunogen affinity purified.   |
| Suggested Dilutions | <p>Dilute the sample so that the expected range of concentrations fall within the detection range of this kit.</p> <p>If the expected range of concentration is unknown, a pilot test should be conducted to decide the optimal dilution ratio for your samples.</p> <p>Some PubMed article(s) citing the expression level of this target are as follows:</p> <p>Boster Bio's internal QC testing used:</p> <p>Western blot, 0.1-0.5ug/ml, Human, Rat, Mouse</p> |

## Anti-SynCAM/CADM1 Antibody (PA2294) Images



Anti-SynCAM antibody, PA2294, All Western blotting

All lanes: Anti-CADM1(PA2294) at 0.5ug/ml

Lane 1: A549 Whole Cell Lysate at 40ug

Lane 2: JURKAT Whole Cell Lysate at 40ug

Lane 3: RAJI Whole Cell Lysate at 40ug

Lane 4: HELA Whole Cell Lysate at 40ug

Predicted bind size: 60KD

Observed bind size: 60KD

## Submit a product review to Biocompare.com

Submit a review of this product to Biocompare.com to receive a \$20 Amazon.com giftcard! Your reviews help your fellow scientists make the right decisions. Thank you for your contribution.



Anti-SynCAM/CADM1 Antibody