

## Anti-CXCL16 Antibody Picoband®

Catalog Number: PB10054

### About CXCL16

CXCL16, Chemokine (C-X-C motif) ligand 16, is a small cytokine belonging to the CXC chemokine family. Larger than other chemokines (with 254 amino acids), CXCL16 is composed of a CXC chemokine domain, a mucin-like stalk, a transmembrane domain and a cytoplasmic tail containing a potential tyrosine phosphorylation site that may bind SH2. By somatic cell hybrid analysis, the CXCL16 gene is mapped to 17p13, a locus separate from all other known chemokines. Chemotaxis assays found that CXCL16 induced a strong chemotactic response in activated CD8 T cells. In addition, CXCL16 induced calcium mobilization.

### Overview

|                      |  |
|----------------------|--|
| Product Name         | Anti-CXCL16 Antibody Picoband®   |
| Reactive Species     | Human  |
| Description          | Boster Bio Anti-CXCL16 Antibody Picoband® catalog # PB10054. Tested in ELISA, WB applications. This antibody reacts with Human. The brand Picoband indicates this is a premium antibody that guarantees superior quality, high affinity, and strong signals with minimal background in Western blot applications. Only our best-performing antibodies are designated as Picoband, ensuring unmatched performance.  |
| Application          | WB, ELISA (Cap)  |
| Clonality            | Polyclonal   |
| Formulation          | Each vial contains antibody formulated with stabilizing components, 0.9 mg NaCl, 0.2 mg Na <sub>2</sub> HPO <sub>4</sub> , and 0.05 mg NaN <sub>3</sub> .<br>*This antibody is supplied in a stabilized formulation.<br>Compatibility with conjugation reactions depends on the chemistry of the conjugation method used. For conjugation methods that are not compatible with the stabilizing components present in this formulation, a carrier-free antibody format is required. |
| Storage Instructions | Store at -20°C for one year from date of receipt. After reconstitution, at 4°C for one month. It can also be aliquotted and stored frozen at -20°C for six months. Avoid repeated freeze-thaw cycles.  |
| Host                 | Rabbit   |
| Uniprot ID           | Q9H2A7   |

### Technical Details

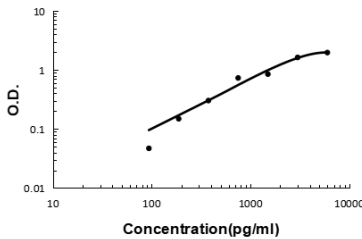
|                               |   |
|-------------------------------|---|
| Immunogen                     | E. coli-derived human CXCL16 recombinant protein (Position: N30-A196). Human CXCL16 shares 47% and 45.7% amino acid (aa) sequence identity with mouse and rat CXCL16, respectively. |
| Recommended Detection Systems | Boster recommends Enhanced Chemiluminescent Kit with anti-Rabbit IgG (EK1002) for Western blot.   |

|                     |   |
|---------------------|---|
| Cross Reactivity    | No cross-reactivity with other proteins                                   |
| Isotype             | Rabbit IgG  |
| Form                | Lyophilized   |
| Concentration       | Adding 0.2 ml of distilled water will yield a concentration of 500 ug/ml. |
| Purification        | Immunogen affinity purified.  |
| Suggested Dilutions | Western blot, 0.1-0.5ug/ml, Human<br>ELISA(Cap) , 1-5ug/ml, Human, -      |

## Anti-CXCL16 Antibody Picoband® (PB10054) Images



Western blot analysis of CXCL16 using anti-CXCL16 antibody (PB10054). Electrophoresis was performed on a 5-20% SDS-PAGE gel at 70V (Stacking gel) / 90V (Resolving gel) for 2-3 hours. The sample well of each lane was loaded with 30 ug of sample under reducing conditions. Lane 1: CEM whole cell lysates, Lane 2: A549 whole cell lysates. After electrophoresis, proteins were transferred to a nitrocellulose membrane at 150 mA for 50-90 minutes. Blocked the membrane with 5% non-fat milk/TBS for 1.5 hour at RT. The membrane was incubated with rabbit anti-CXCL16 antigen affinity purified polyclonal antibody (Catalog # PB10054) at 0.5 ug/mL overnight at 4°C, then washed with TBS-0.1%Tween 3 times with 5 minutes each and probed with a goat anti-rabbit IgG-HRP secondary antibody at a dilution of 1:5000 for 1.5 hour at RT. The signal is developed using an Enhanced Chemiluminescent detection (ECL) kit (Catalog # EK1002) with Tanon 5200 system. A specific band was detected for CXCL16 at approximately 35 kDa. The expected band size for CXCL16 is at 28 kDa.



Sandwich ELISA - Recombinant human cxcl16 protein standard curve. Use in combination with reagents from Human cxcl16 ELISA Kit EZ-Set (DIY Antibody Pairs) (EZ0741).

### Submit a product review to Biocompare.com

Submit a review of this product to Biocompare.com to receive a \$20 Amazon.com giftcard! Your reviews help your fellow scientists make the right decisions. Thank you for your contribution.



### Anti-CXCL16 Antibody

For Research Use Only. Not for use in diagnostic procedures.