

## Anti-Cytochrome P450 3A4/CYP3A4 Antibody Picoband™

Catalog Number: PB10055

### About CYP3A4

Cytochrome P450 3A4 (abbreviated CYP3A4), is an important enzyme in the body, mainly found in the liver and in the intestine. This gene encodes a member of the cytochrome P450 superfamily of enzymes. The cytochrome P450 proteins are monooxygenases that catalyze many reactions involved in drug metabolism and synthesis of cholesterol, steroids and other lipids. This protein localizes to the endoplasmic reticulum and its expression is induced by glucocorticoids and some pharmacological agents. This enzyme is involved in the metabolism of approximately half the drugs in use today, including acetaminophen, codeine, cyclosporin A, diazepam and erythromycin. The enzyme also metabolizes some steroids and carcinogens. This gene is part of a cluster of cytochrome P450 genes on chromosome 7q21.1. Previously another CYP3A gene, CYP3A3, was thought to exist; however, it is now thought that this sequence represents a transcript variant of CYP3A4. Alternatively spliced transcript variants encoding different isoforms have been identified.

### Overview

|                      |   |
|----------------------|---|
| Product Name         | Anti-Cytochrome P450 3A4/CYP3A4 Antibody Picoband™  |
| Reactive Species     | Human   |
| Description          | Boster Bio Anti-Cytochrome P450 3A4/CYP3A4 Antibody Picoband™ catalog # PB10055. Tested in IHC, WB applications. This antibody reacts with Human.   |
| Application          | IHC, WB   |
| Clonality            | Polyclonal  |
| Formulation          | Each vial contains 5mg BSA, 0.9mg NaCl, 0.2mg Na <sub>2</sub> HPO <sub>4</sub> , 0.05mg NaN <sub>3</sub> .  |
| Storage Instructions | Store at -20°C for one year from date of receipt. After reconstitution, at 4°C for one month. It can also be aliquotted and stored frozen at -20°C for six months. Avoid repeated freeze-thaw cycles. |
| Host                 | Rabbit  |
| Uniprot ID           | P08684  |

### Technical Details

|                               |  |
|-------------------------------|--|
| Immunogen                     | A synthetic peptide corresponding to a sequence in the middle region of human CYP3A4.  |
| Predicted Reactive Species    | Bovine, Canine, Chicken, Hamster, Horse, Monkey, Rabbit, Zebrafish   |
| Recommended Detection Systems | Boster recommends Enhanced Chemiluminescent Kit with anti-Rabbit IgG (EK1002) for Western blot, and HRP Conjugated anti-Rabbit IgG Super Vision Assay Kit (SV0002-1) for IHC(P). |
| Cross Reactivity              | No cross-reactivity with other proteins  |
| Isotype                       | Rabbit IgG   |

|                     |  |
|---------------------|--|
| Form                | Lyophilized  |
| Concentration       | Adding 0.2 ml of distilled water will yield a concentration of 500 ug/ml.  |
| Purification        | Immunogen affinity purified.   |
| Suggested Dilutions | <p>Dilute the sample so that the expected range of concentrations fall within the detection range of this kit.</p> <p>If the expected range of concentration is unknown, a pilot test should be conducted to decide the optimal dilution ratio for your samples.</p> <p>Some PubMed article(s) citing the expression level of this target are as follows:</p> <p>Boster Bio's internal QC testing used:</p> <p>Immunohistochemistry (Paraffin-embedded Section), 0.5-1ug/ml, Human, By Heat</p> <p>Western blot, 0.1-0.5ug/ml, Human</p> |

## Anti-Cytochrome P450 3A4/CYP3A4 Antibody Picoband™ (PB10055) Images



Figure 1. Western blot analysis of CYP3A4 using anti-CYP3A4 antibody (PB10055).

Electrophoresis was performed on a 5-20% SDS-PAGE gel at 70V (Stacking gel) / 90V (Resolving gel) for 2-3 hours. The sample well of each lane was loaded with 30 ug of sample under reducing conditions.

Lane 1: HELA whole cell lysates.

After electrophoresis, proteins were transferred to a nitrocellulose membrane at 150 mA for 50-90 minutes. Blocked the membrane with 5% non-fat milk/TBS for 1.5 hour at RT. The membrane was incubated with rabbit anti-CYP3A4 antigen affinity purified polyclonal antibody (Catalog # PB10055) at 0.5 ug/mL overnight at 4°C, then washed with TBS-0.1%Tween 3 times with 5 minutes each and probed with a goat anti-rabbit IgG-HRP secondary antibody at a dilution of 1:5000 for 1.5 hour at RT. The signal is developed using an Enhanced Chemiluminescent detection (ECL) kit (Catalog # EK1002) with Tanon 5200 system. A specific band was detected for CYP3A4 at approximately 57 kDa. The expected band size for CYP3A4 is at 57 kDa.

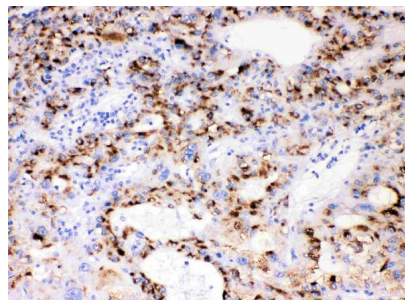


Figure 2. IHC analysis of CYP3A4 using anti-CYP3A4 antibody (PB10055).

CYP3A4 was detected in a paraffin-embedded section of human liver cancer tissue. Heat mediated antigen retrieval was performed in EDTA buffer (pH 8.0, epitope retrieval solution). The tissue section was blocked with 10% goat serum. The tissue section was then incubated with 1 ug/ml rabbit anti-CYP3A4 Antibody (PB10055) overnight at 4°C. Biotinylated goat anti-rabbit IgG was used as secondary antibody and incubated for 30 minutes at 37°C. The tissue section was developed using Streptavidin-Biotin-Complex (SABC) (Catalog # SA1022) with DAB as the chromogen.

### Submit a product review to Biocompare.com

Submit a review of this product to Biocompare.com to receive a \$20 Amazon.com giftcard! Your reviews help your fellow scientists make the right decisions. Thank you for your contribution.



Anti-Cytochrome P450 3A4/CYP3A4 Antibody™