

Anti-alpha 1 Antitrypsin/SERPINA1 Antibody Picoband®

Catalog Number: PB10097

About SERPINA1

SERPINA1 is also known as PI, A1A or AAT. This gene is mapped to 14q32.1. The protein encoded by this gene is secreted and is a serine protease inhibitor whose targets include elastase, plasmin, thrombin, trypsin, chymotrypsin, and plasminogen activator. Defects in this gene can cause emphysema or liver disease. Several transcript variants encoding the same protein have been found for this gene.

Overview

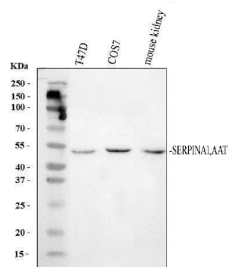
Product Name	Anti-alpha 1 Antitrypsin/SERPINA1 Antibody Picoband®
Reactive Species	Human, Monkey, Mouse
Description	Boster Bio Anti-alpha 1 Antitrypsin/SERPINA1 Antibody Picoband® catalog # PB10097. Tested in WB applications. This antibody reacts with Human, Monkey, Mouse. The brand Picoband indicates this is a premium antibody that guarantees superior quality, high affinity, and strong signals with minimal background in Western blot applications. Only our best-performing antibodies are designated as Picoband, ensuring unmatched performance.
Application	WB
Clonality	Polyclonal
Formulation	Each vial contains 4 mg Trehalose, 0.9 mg NaCl and 0.2 mg Na ₂ HPO ₄ .
Storage Instructions	Store at -20°C for one year from date of receipt. After reconstitution, at 4°C for one month. It can also be aliquotted and stored frozen at -20°C for six months. Avoid repeated freeze-thaw cycles.
Host	Rabbit
Uniprot ID	P01009

Technical Details

Immunogen	E. coli-derived human SERPINA1 recombinant protein (Position: E25-T204). Human SERPINA1 shares 72.8% amino acid (aa) sequence identity with rat SERPINA1.
Recommended Detection Systems	Boster recommends Enhanced Chemiluminescent Kit with anti-Rabbit IgG (EK1002) for Western blot.
Cross Reactivity	No cross-reactivity with other proteins.
Isotype	Rabbit IgG
Form	Lyophilized
Concentration	Adding 0.2 ml of distilled water will yield a concentration of 500 ug/ml.

Purification	Immunogen affinity purified.
Suggested Dilutions	Western blot, 0.1-0.5ug/ml, Human, Monkey, Mouse

Anti-alpha 1 Antitrypsin/SERPINA1 Antibody Picoband® (PB10097) Images



Western blot analysis of SERPINA1 using anti-SERPINA1 antibody (PB10097). Electrophoresis was performed on a 10% SDS-PAGE gel at 80V (Stacking gel) / 120V (Resolving gel) for 2 hours. The sample well of each lane was loaded with 30 ug of sample under reducing conditions. Lane 1: human T47D whole cell lysates, Lane 2: monkey COS-7 whole cell lysates, Lane 3: mouse kidney tissue lysates. After electrophoresis, proteins were transferred to a nitrocellulose membrane at 150 mA for 50-90 minutes. Blocked the membrane with 5% non-fat milk/TBS for 1.5 hour at RT. The membrane was incubated with rabbit anti-SERPINA1 antigen affinity purified polyclonal antibody (PB10097) at 0.5 ug/mL overnight at 4°C, then washed with TBS-0.1%Tween 3 times with 5 minutes each and probed with a goat anti-rabbit IgG-HRP secondary antibody (Catalog # BA1054) at a dilution of 1:5000 for 1.5 hour at RT. The signal is developed using an ECL Plus Western Blotting Substrate (Catalog # AR1196-200) with Tanon 5200 system. A specific band was detected for SERPINA1 at approximately 53 kDa. The expected band size for SERPINA1 is at 47 kDa.

1 Publications Citing This Product

1. PubMed ID: 29434730, Lv X, Gao F, Liu Q, Zhang S, Huang Z, Zhu Y, Zong H, Li Q, Li S. Exp Ther Med. 2018 Feb;15(2):1465-1473. doi: 10.3892/etm.2017.5554. Epub 2017 Nov 23. Clinical and pathological characteristics of IgG4-related interstitial lung disease

Visit bosterbio.com/anti-serpina1-picoband-trade-antibody-pb10097-boster.html to see all 1 publications.

Submit a product review to Biocompare.com

Submit a review of this product to Biocompare.com to receive a \$20 Amazon.com giftcard! Your reviews help your fellow scientists make the right decisions. Thank you for your contribution.



Anti-alpha 1 Antitrypsin/SERPINA1 Antibody

For Research Use Only. Not for use in diagnostic procedures.