

## Anti-Serum Amyloid P/APCS Antibody Picoband™

Catalog Number: PB9020

### About Apcs

Amyloid P component, serum (SAP), also known as PTX2 or APCS, is the identical serum form of amyloid P component (AP), a 25kDa pentameric protein first identified as the pentagonal constituent of in vivo pathological deposits called "amyloid". It belongs to the pentraxins family, characterised by calcium dependent ligand binding and distinctive flattened beta-jellyroll structure similar to that of the legume lectins. This gene is mapped to 1q23.2. The binding of the encoded protein to proteins in the pathological amyloid cross-beta fold suggests its possible role as a chaperone. This protein is also thought to control the degradation of chromatin. It has been demonstrated that this protein binds to apoptotic cells at an early stage, which raises the possibility that it is involved in dealing with apoptotic cells in vivo.

### Overview

Product Name	Anti-Serum Amyloid P/APCS Antibody Picoband™
Reactive Species	Mouse, Rat
Description	Boster Bio Anti-Serum Amyloid P/APCS Antibody Picoband™ catalog # PB9020. Tested in ELISA, IHC, WB applications. This antibody reacts with Mouse, Rat.
Application	ELISA, IHC, WB
Clonality	Polyclonal
Formulation	Each vial contains 4 mg Trehalose, 0.9 mg NaCl and 0.2 mg Na2HPO4.
Storage Instructions	Store at -20°C for one year from date of receipt. After reconstitution, at 4°C for one month. It can also be aliquotted and stored frozen at -20°C for six months. Avoid repeated freeze-thaw cycles.
Host	Rabbit
Uniprot ID	P12246

### Technical Details

Immunogen	E.coli-derived mouse Serum Amyloid P recombinant protein (Position: Q21-D224). Mouse Serum Amyloid P shares 70% and 80% amino acid (aa) sequences identity with human and rat Serum Amyloid P, respectively.
Predicted Reactive Species	Bovine, Chicken, Horse, Monkey, Rabbit
Recommended Detection Systems	Boster recommends Enhanced Chemiluminescent Kit with anti-Rabbit IgG (EK1002) for Western blot, and HRP Conjugated anti-Rabbit IgG Super Vision Assay Kit (SV0002-1) for IHC(P).
Cross Reactivity	No cross-reactivity with other proteins
Isotype	Rabbit IgG

Form	Lyophilized
Concentration	Adding 0.2 ml of distilled water will yield a concentration of 500 ug/ml.
Purification	Immunogen affinity purified.
Suggested Dilutions	<p>Dilute the sample so that the expected range of concentrations fall within the detection range of this kit.</p> <p>If the expected range of concentration is unknown, a pilot test should be conducted to decide the optimal dilution ratio for your samples.</p> <p>Some PubMed article(s) citing the expression level of this target are as follows:</p> <p>Boster Bio's internal QC testing used:</p> <p>ELISA , 0.1-0.5ug/ml, Mouse, -</p> <p>Immunohistochemistry (Paraffin-embedded Section), 2-5ug/ml, Rat, By Heat</p> <p>Western blot, 0.1-0.5ug/ml, Mouse</p>

## Anti-Serum Amyloid P/APCS Antibody Picoband™ (PB9020) Images

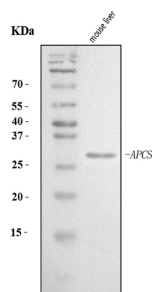


Figure 1. Western blot analysis of Serum Amyloid P using anti-Serum Amyloid P antibody (PB9020). Electrophoresis was performed on a 5-20% SDS-PAGE gel at 70V (Stacking gel) / 90V (Resolving gel) for 2-3 hours. The sample well of each lane was loaded with 30 ug of sample under reducing conditions.

Lane 1: mouse liver tissue lysates.

After electrophoresis, proteins were transferred to a nitrocellulose membrane at 150 mA for 50-90 minutes. Blocked the membrane with 5% non-fat milk/TBS for 1.5 hour at RT. The membrane was incubated with rabbit anti-Serum Amyloid P antigen affinity purified polyclonal antibody (Catalog # PB9020) at 0.5 ug/mL overnight at 4°C, then washed with TBS-0.1%Tween 3 times with 5 minutes each and probed with a goat anti-rabbit IgG-HRP secondary antibody at a dilution of 1:5000 for 1.5 hour at RT. The signal is developed using an Enhanced Chemiluminescent detection (ECL) kit (Catalog # EK1002) with Tanon 5200 system. A specific band was detected for Serum Amyloid P at approximately 25-29 kDa. The expected band size for Serum Amyloid P is at 25 kDa.

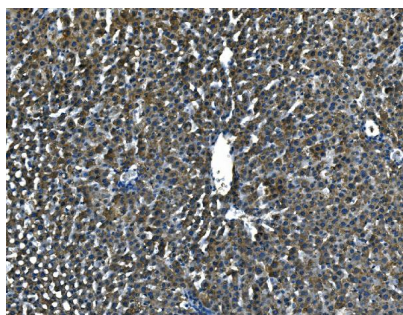


Figure 2. IHC analysis of Serum Amyloid P using anti-Serum Amyloid P antibody (PB9020).

Serum Amyloid P was detected in a paraffin-embedded section of rat liver tissue. Heat mediated antigen retrieval was performed in EDTA buffer (pH 8.0, epitope retrieval solution). The tissue section was blocked with 10% goat serum. The tissue section was then incubated with 2 ug/ml rabbit anti-Serum Amyloid P Antibody (PB9020) overnight at 4°C. Peroxidase Conjugated Goat Anti-rabbit IgG was used as secondary antibody and incubated for 30 minutes at 37°C. The tissue section was developed using HRP Conjugated Rabbit IgG Super Vision Assay Kit (Catalog # SV0002) with DAB as the chromogen.

**Submit a product review to Biocompare.com**

Submit a review of this product to Biocompare.com to receive a \$20 Amazon.com giftcard! Your reviews help your fellow scientists make the right decisions. Thank you for your contribution.



Anti-Serum Amyloid P/APCS Antibody™