

## Anti-I-309/CCL1 Antibody Picoband®

Catalog Number: PB9028

### About CCL1

CCL1, Chemokine (C-C motif) ligand 1, is one of several cytokine genes clustered on the q-arm of chromosome 17. Cytokines are a family of secreted proteins involved in immunoregulatory and inflammatory processes. The protein encoded by this gene is structurally related to the CXC subfamily of cytokines. Members of this subfamily are characterized by two cysteines separated by a single amino acid. This cytokine is secreted by activated T cells and displays chemotactic activity for monocytes but not for neutrophils. It binds to the chemokine receptor CCR8.

### Overview

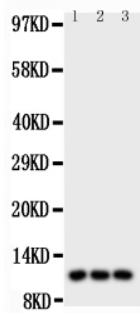
Product Name	Anti-I-309/CCL1 Antibody Picoband®
Reactive Species	Human
Description	Boster Bio Anti-I-309/CCL1 Antibody Picoband® catalog # PB9028. Tested in ELISA, WB applications. This antibody reacts with Human. The brand Picoband indicates this is a premium antibody that guarantees superior quality, high affinity, and strong signals with minimal background in Western blot applications. Only our best-performing antibodies are designated as Picoband, ensuring unmatched performance.
Application	ELISA, WB
Clonality	Polyclonal
Formulation	Each vial contains 4 mg Trehalose, 0.9 mg NaCl and 0.2 mg Na <sub>2</sub> HPO <sub>4</sub> .
Storage Instructions	Store at -20°C for one year from date of receipt. After reconstitution, at 4°C for one month. It can also be aliquotted and stored frozen at -20°C for six months. Avoid repeated freeze-thaw cycles.
Host	Rabbit
Uniprot ID	P22362

### Technical Details

Immunogen	E.coli-derived human I-309 recombinant protein (Position: K24-K96). Human I-309 shares 38% amino acid (aa) sequence identity with mouse I-309.
Recommended Detection Systems	Boster recommends Enhanced Chemiluminescent Kit with anti-Rabbit IgG (EK1002) for Western blot.
Cross Reactivity	No cross-reactivity with other proteins
Isotype	Rabbit IgG
Form	Lyophilized
Concentration	Adding 0.2 ml of distilled water will yield a concentration of 500 ug/ml.

Purification	Immunogen affinity purified.
Suggested Dilutions	Western blot, 0.1-0.5ug/ml, Human, - ELISA, 0.1-0.5ug/ml, -

## Anti-I-309/CCL1 Antibody Picoband® (PB9028) Images



Western blot analysis of I-309 using anti-I-309 antibody (PB9028). Electrophoresis was performed on a 5-20% SDS-PAGE gel at 70V (Stacking gel) / 90V (Resolving gel) for 2-3 hours. The sample well of each lane was loaded with 50ug of sample under reducing conditions. Lane 1: U87 Whole Cell Lysate, Lane 2: MCF-7 Whole Cell Lysate, Lane 3: COLO320 Whole Cell Lysate. After Electrophoresis, proteins were transferred to a Nitrocellulose membrane at 150mA for 50-90 minutes. Blocked the membrane with 5% Non-fat Milk/TBS for 1.5 hour at RT. The membrane was incubated with rabbit anti-I-309 antigen affinity purified polyclonal antibody (Catalog # PB9028) at 0.5 ug/mL overnight at 4°C, then washed with TBS-0.1%Tween 3 times with 5 minutes each and probed with a goat anti-rabbit IgG-HRP secondary antibody at a dilution of 1:10000 for 1.5 hour at RT. The signal is developed using an Enhanced Chemiluminescent detection (ECL) kit (Catalog # EK1002) with Tanon 5200 system. A specific band was detected for I-309 at approximately 11KD. The expected band size for I-309 is at 11KD.

## 4 Publications Citing This Product

1. PubMed ID: 19424673, Treating Human Meniscal Fibrochondrocytes with hIGF-1 Gene by Liposome
2. PubMed ID: 22720981, Insulin-like growth factors in endometrioid adenocarcinoma: Correlation with clinico-pathological features and estrogen receptor expression
3. PubMed ID: 27725848, Let-7a inhibits migration of melanoma cells via down-regulation of HMGA2 expression

Visit [bosterbio.com/anti-i-309-picoband-trade-antibody-pb9028-boster.html](http://bosterbio.com/anti-i-309-picoband-trade-antibody-pb9028-boster.html) to see all 4 publications.

## Submit a product review to Biocompare.com

Submit a review of this product to Biocompare.com to receive a \$20 Amazon.com giftcard! Your reviews help your fellow scientists make the right decisions. Thank you for your contribution.



Anti-I-309/CCL1 Antibody

For Research Use Only. Not for use in diagnostic procedures.