

Anti-Macrophage Inflammatory Protein 1 beta/CCL4 Antibody Picoband®

Catalog Number: PB9064

About Ccl4

Chemokine (C-C motif) ligand 4, also known as CCL4, is a protein which in human is encoded by the CCL4 gene. By analysis of somatic cell hybrids and by in situ hybridization, the CCL4 gene was assigned to 17q21-q23. It is a CC chemokine with specificity for CCR5 receptors. It is a chemoattractant for natural killer cells, monocytes and a variety of other immune cells. CCL4 is a major HIV-suppressive factor produced by CD8+ T cells. Performing-low memory CD8+ T cells that normally synthesize CCL4. Based on functional analysis of CCL4, one or more additional beta chemokine receptors that transduce CCL4 signals must also exist. MIP-1alpha and CCL4 have been shown to lack affinity for the erythrocyte surface chemokine receptor/Duffy antigen that binds many alpha as well as beta chemokines (11, 14).

Overview

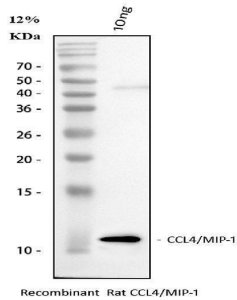
Product Name	Anti-Macrophage Inflammatory Protein 1 beta/CCL4 Antibody Picoband®
Reactive Species	Rat
Description	Boster Bio Anti-Macrophage Inflammatory Protein 1 beta/CCL4 Antibody Picoband® catalog # PB9064. Tested in IHC, WB applications. This antibody reacts with Rat. The brand Picoband indicates this is a premium antibody that guarantees superior quality, high affinity, and strong signals with minimal background in Western blot applications. Only our best-performing antibodies are designated as Picoband, ensuring unmatched performance.
Application	IHC, WB
Clonality	Polyclonal
Formulation	Each vial contains 4 mg Trehalose, 0.9 mg NaCl and 0.2 mg Na ₂ HPO ₄ .
Storage Instructions	Store at -20°C for one year from date of receipt. After reconstitution, at 4°C for one month. It can also be aliquotted and stored frozen at -20°C for six months. Avoid repeated freeze-thaw cycles.
Host	Rabbit
Uniprot ID	P50230

Technical Details

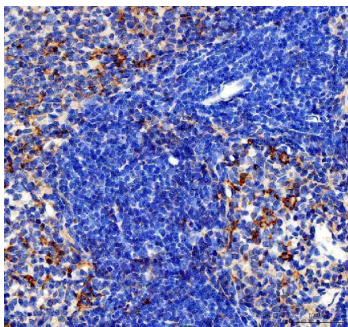
Immunogen	E.coli-derived rat CCL4 recombinant protein (Position: A24-N92). Rat CCL4 shares 80% and 86% amino acid (aa) sequences identity with human and mouse CCL4, respectively.
Recommended Detection Systems	Boster recommends Enhanced Chemiluminescent Kit with anti-Rabbit IgG (EK1002) for Western blot, and HRP Conjugated anti-Rabbit IgG Super Vision Assay Kit (SV0002-1) for IHC(P).
Cross Reactivity	No cross-reactivity with other proteins
Isotype	Rabbit IgG

Form	Lyophilized
Concentration	Adding 0.2 ml of distilled water will yield a concentration of 500 ug/ml.
Purification	Immunogen affinity purified.
Suggested Dilutions	Western blot, 0.1-0.5ug/ml, Rat Immunohistochemistry(Paraffin-embedded Section), 2-5 ug/ml, Rat

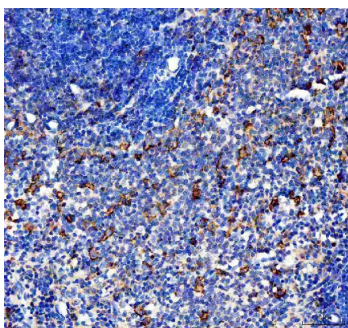
Anti-Macrophage Inflammatory Protein 1 beta/CCL4 Antibody Picoband® (PB9064) Images



Western blot analysis of CCL4 using anti-CCL4 antibody (PB9064). Electrophoresis was performed on a 5-20% SDS-PAGE gel at 70V (Stacking gel) / 90V (Resolving gel) for 2-3 hours. Lane 1: recombinant rat CCL4 protein 10 ng. After electrophoresis, proteins were transferred to a nitrocellulose membrane at 150 mA for 50-90 minutes. Blocked the membrane with 5% non-fat milk/TBS for 1.5 hour at RT. The membrane was incubated with rabbit anti-CCL4 antigen affinity purified polyclonal antibody (Catalog # PB9064) at 0.5 ug/mL overnight at 4°C, then washed with TBS-0.1%Tween 3 times with 5 minutes each and probed with a goat anti-rabbit IgG-HRP secondary antibody at a dilution of 1:5000 for 1.5 hour at RT. The signal is developed using an Enhanced Chemiluminescent detection (ECL) kit (Catalog # EK1002) with Tanon 5200 system. A specific band was detected for CCL4 at approximately 11 kDa.



IHC analysis of CCL4 using anti-CCL4 antibody (PB9064). CCL4 was detected in a paraffin-embedded section of rat spleen tissue. Heat mediated antigen retrieval was performed in EDTA buffer (pH 8.0, epitope retrieval solution). The tissue section was blocked with 10% goat serum. The tissue section was then incubated with 2 ug/ml rabbit anti-CCL4 Antibody (PB9064) overnight at 4°C. Peroxidase Conjugated Goat Anti-rabbit IgG was used as secondary antibody and incubated for 30 minutes at 37°C. The tissue section was developed using HRP Conjugated Rabbit IgG Super Vision Assay Kit (Catalog # SV0002) with DAB as the chromogen.



IHC analysis of CCL4 using anti-CCL4 antibody (PB9064). CCL4 was detected in a paraffin-embedded section of rat spleen tissue. Heat mediated antigen retrieval was performed in EDTA buffer (pH 8.0, epitope retrieval solution). The tissue section was blocked with 10% goat serum. The tissue section was then incubated with 2 ug/ml rabbit anti-CCL4 Antibody (PB9064) overnight at 4°C. Peroxidase Conjugated Goat Anti-rabbit IgG was used as secondary antibody and incubated for 30 minutes at 37°C. The tissue section was developed using HRP Conjugated Rabbit IgG Super Vision Assay Kit (Catalog # SV0002) with DAB as the chromogen.

Submit a product review to [Biocompare.com](https://www.biocompare.com)

Submit a review of this product to [Biocompare.com](https://www.biocompare.com) to receive a \$20 Amazon.com giftcard! Your reviews help your fellow scientists make the right decisions. Thank you for your contribution.



For Research Use Only. Not for use in diagnostic procedures.