

Anti-Eotaxin/CCL11 Antibody Picoband®

Catalog Number: PB9065

About Ccl11

CCL11, also known as Eotaxin, is a potent inducer of eosinophil chemotaxis and is considered as a selective ligand of the CC chemokine receptor 3 (CCR3), which is expressed on eosinophils, basophils, and Th2 lymphocytes. The gene maps to chromosome 17 and is expressed constitutively at high levels in small intestine and colon, and at lower levels in various other tissues. CCL11 is a small cytokine belonging to the CC chemokine family. It is assumed to be involved in eosinophilic inflammatory diseases such as atopic dermatitis, allergic rhinitis, asthma and parasitic infections. The effects of CCL11 are mediated by its binding to a G-protein-linked receptor known as a chemokine receptor.

Overview

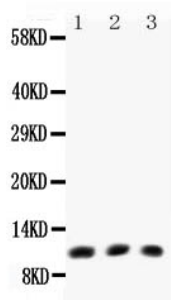
Product Name	Anti-Eotaxin/CCL11 Antibody Picoband®
Reactive Species	Mouse
Description	Boster Bio Anti-Eotaxin/CCL11 Antibody Picoband® catalog # PB9065. Tested in WB applications. This antibody reacts with Mouse. The brand Picoband indicates this is a premium antibody that guarantees superior quality, high affinity, and strong signals with minimal background in Western blot applications. Only our best-performing antibodies are designated as Picoband, ensuring unmatched performance.
Application	WB
Clonality	Polyclonal
Formulation	Each vial contains antibody formulated with stabilizing components, 0.9 mg NaCl, 0.2 mg Na ₂ HPO ₄ , and 0.05 mg NaN ₃ . *This antibody is supplied in a stabilized formulation. Compatibility with conjugation reactions depends on the chemistry of the conjugation method used. For conjugation methods that are not compatible with the stabilizing components present in this formulation, a carrier-free antibody format is required.
Storage Instructions	Store at -20°C for one year from date of receipt. After reconstitution, at 4°C for one month. It can also be aliquotted and stored frozen at -20°C for six months. Avoid repeated freeze-thaw cycles.
Host	Rabbit
Uniprot ID	P48298

Technical Details

Immunogen	E.coli-derived mouse Eotaxin recombinant protein (Position: H24-P97). Mouse Eotaxin shares 62% and 97% amino acid (aa) sequences identity with human and rat Eotaxin, respectively.
Recommended Detection Systems	Boster recommends Enhanced Chemiluminescent Kit with anti-Rabbit IgG (EK1002) for Western blot.

Cross Reactivity	No cross-reactivity with other proteins
Isotype	Rabbit IgG
Form	Lyophilized
Concentration	Adding 0.2 ml of distilled water will yield a concentration of 500 ug/ml.
Purification	Immunogen affinity purified.
Suggested Dilutions	Western blot, 0.1-0.5ug/ml, Mouse

Anti-Eotaxin/CCL11 Antibody Picoband® (PB9065) Images



Western blot analysis of Eotaxin using anti-Eotaxin antibody (PB9065). Electrophoresis was performed on a 5-20% SDS-PAGE gel at 70V (Stacking gel) / 90V (Resolving gel) for 2-3 hours. The sample well of each lane was loaded with 30 ug of sample under reducing conditions. Lane 1: mouse lung tissue lysates, Lane 2: mouse intestines tissue lysates, Lane 3: human Hela whole cell lysates. After electrophoresis, proteins were transferred to a nitrocellulose membrane at 150 mA for 50-90 minutes. Blocked the membrane with 5% non-fat milk/TBS for 1.5 hour at RT. The membrane was incubated with rabbit anti-Eotaxin antigen affinity purified polyclonal antibody (Catalog # PB9065) at 0.5 ug/mL overnight at 4°C, then washed with TBS-0.1%Tween 3 times with 5 minutes each and probed with a goat anti-rabbit IgG-HRP secondary antibody at a dilution of 1:5000 for 1.5 hour at RT. The signal is developed using an Enhanced Chemiluminescent detection (ECL) kit (Catalog # EK1002) with Tanon 5200 system. A specific band was detected for Eotaxin at approximately 11 kDa. The expected band size for Eotaxin is at 11 kDa.

Submit a product review to Biocompare.com

Submit a review of this product to Biocompare.com to receive a \$20 Amazon.com giftcard! Your reviews help your fellow scientists make the right decisions. Thank you for your contribution.



Anti-Eotaxin/CCL11 Antibody

For Research Use Only. Not for use in diagnostic procedures.