

Anti-FSH beta/FSHB Antibody Picoband®

Catalog Number: PB9106

About FSHB

FSHB, also known as Follitropin subunit beta, is a protein that in humans is encoded by the FSHB gene, and this gene is mapped to 11p14.1. FSHB enables ovarian folliculogenesis to the antral follicle stage and is essential for Sertoli cell proliferation and maintenance of sperm quality in the testis. It can stimulate development of follicle and spermatogenesis in the reproductive organs. This gene encodes the beta subunit of follicle-stimulating hormone. In conjunction with luteinizing hormone, follicle-stimulating hormone induces egg and sperm production.

Overview

Product Name	Anti-FSH beta/FSHB Antibody Picoband®
Reactive Species	Human, Mouse
Description	Boster Bio Anti-FSH beta/FSHB Antibody Picoband® catalog # PB9106. Tested in IHC, WB applications. This antibody reacts with Human, Mouse. The brand Picoband indicates this is a premium antibody that guarantees superior quality, high affinity, and strong signals with minimal background in Western blot applications. Only our best-performing antibodies are designated as Picoband, ensuring unmatched performance.
Application	IHC, WB
Clonality	Polyclonal
Formulation	Each vial contains antibody formulated with stabilizing components, 0.9 mg NaCl, 0.2 mg Na ₂ HPO ₄ , and 0.05 mg Na ₃ N. *This antibody is supplied in a stabilized formulation. Compatibility with conjugation reactions depends on the chemistry of the conjugation method used. For conjugation methods that are not compatible with the stabilizing components present in this formulation, a carrier-free antibody format is required.
Storage Instructions	Store at -20°C for one year from date of receipt. After reconstitution, at 4°C for one month. It can also be aliquotted and stored frozen at -20°C for six months. Avoid repeated freeze-thaw cycles.
Host	Rabbit
Uniprot ID	P01225

Technical Details

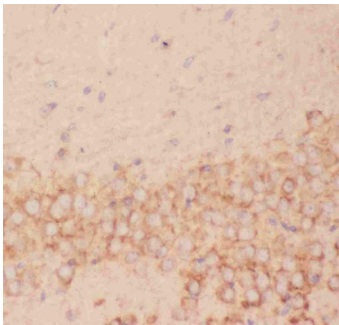
Immunogen	E.coli-derived human FSH beta recombinant protein (Position: N19-E129). Human FSH beta shares 90% and 89% amino acid (aa) sequences identity with mouse and rat FSH beta, respectively.
Recommended Detection Systems	Boster recommends Enhanced Chemiluminescent Kit with anti-Rabbit IgG (EK1002) for Western blot, and HRP Conjugated anti-Rabbit IgG Super Vision Assay Kit (SV0002-1) for IHC(P).
Cross Reactivity	No cross-reactivity with other proteins

Isotype	Rabbit IgG
Form	Lyophilized
Concentration	Adding 0.2 ml of distilled water will yield a concentration of 500 ug/ml.
Purification	Immunogen affinity purified.
Suggested Dilutions	Immunohistochemistry (Paraffin-embedded Section), 0.5-1ug/ml, Human, Mouse Western blot, 0.1-0.5ug/ml, Human

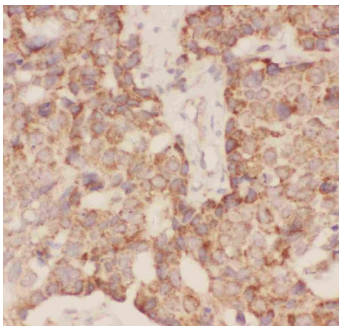
Anti-FSH beta/FSHB Antibody Picoband® (PB9106) Images



Western blot analysis of FSH beta using anti-FSH beta antibody (PB9106). Electrophoresis was performed on a 5-20% SDS-PAGE gel at 70V (Stacking gel) / 90V (Resolving gel) for 2-3 hours Lane 1: recombinant human FSH beta protein 0.5 ng. After electrophoresis, proteins were transferred to a nitrocellulose membrane at 150 mA for 50-90 minutes. Blocked the membrane with 5% non-fat milk/TBS for 1.5 hour at RT. The membrane was incubated with rabbit anti-FSH beta antigen affinity purified polyclonal antibody (Catalog # PB9106) at 0.5 ug/mL overnight at 4°C, then washed with TBS-0.1%Tween 3 times with 5 minutes each and probed with a goat anti-rabbit IgG-HRP secondary antibody at a dilution of 1:5000 for 1.5 hour at RT. The signal is developed using an Enhanced Chemiluminescent detection (ECL) kit (Catalog # EK1002) with Tanon 5200 system. A specific band was detected for FSH beta at approximately 36 kDa. The expected band size for FSH beta is at 36 kDa.



IHC analysis of FSH beta using anti-FSH beta antibody (PB9106). FSH beta was detected in a paraffin-embedded section of mouse brain tissue. Heat mediated antigen retrieval was performed in EDTA buffer (pH 8.0, epitope retrieval solution). The tissue section was blocked with 10% goat serum. The tissue section was then incubated with 2 ug/ml rabbit anti-FSH beta Antibody (PB9106) overnight at 4°C. Biotinylated goat anti-rabbit IgG was used as secondary antibody and incubated for 30 minutes at 37°C. The tissue section was developed using Streptavidin-Biotin-Complex (SABC) (Catalog # SA1022) with DAB as the chromogen.



IHC analysis of FSH beta using anti-FSH beta antibody (PB9106). FSH beta was detected in a paraffin-embedded section of human mammary cancer tissue. Heat mediated antigen retrieval was performed in EDTA buffer (pH 8.0, epitope retrieval solution). The tissue section was blocked with 10% goat serum. The tissue section was then incubated with 2 ug/ml rabbit anti-FSH beta Antibody (PB9106) overnight at 4°C. Biotinylated goat anti-rabbit IgG was used as secondary antibody and incubated for 30 minutes at 37°C. The tissue section was developed using Streptavidin-Biotin-Complex (SABC) (Catalog # SA1022) with DAB as the chromogen.

Submit a product review to [Biocompare.com](https://www.biocompare.com)

Submit a review of this product to [Biocompare.com](https://www.biocompare.com) to receive a \$20 Amazon.com giftcard! Your reviews help your fellow scientists make the right decisions. Thank you for your contribution.



Anti-FSH beta/FSHB Antibody

For Research Use Only. Not for use in diagnostic procedures.