

Anti-SynCAM/CADM1 Antibody Picoband®

Catalog Number: PB9136

About CADM1

Cell adhesion molecule 1 is a protein that, in humans, is encoded by the CADM1 gene. This gene is also known as IGSF4, SYNCAM or TSLC1, and it is mapped to 11q23.3. CADM1 functions as a homophilic cell adhesion molecule at the synapse. Expression of the isolated cytoplasmic tail of CADM1 in neurons inhibited synapse assembly. Conversely, expression of full-length CADM1 in nonneuronal cells induced synapse formation by cocultured hippocampal neurons with normal release properties.

Overview

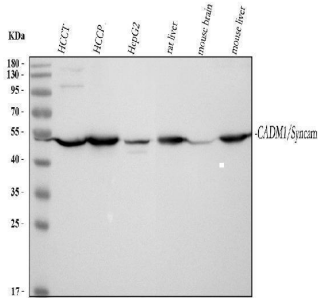
Product Name	Anti-SynCAM/CADM1 Antibody Picoband®
Reactive Species	Human, Mouse, Rat
Description	Boster Bio Anti-SynCAM/CADM1 Antibody Picoband® catalog # PB9136. Tested in WB applications. This antibody reacts with Human, Mouse, Rat. The brand Picoband indicates this is a premium antibody that guarantees superior quality, high affinity, and strong signals with minimal background in Western blot applications. Only our best-performing antibodies are designated as Picoband, ensuring unmatched performance.
Application	WB
Clonality	Polyclonal
Formulation	Each vial contains 4 mg Trehalose, 0.9 mg NaCl and 0.2 mg Na ₂ HPO ₄ .
Storage Instructions	Store at -20°C for one year from date of receipt. After reconstitution, at 4°C for one month. It can also be aliquotted and stored frozen at -20°C for six months. Avoid repeated freeze-thaw cycles.
Host	Rabbit
Uniprot ID	Q9BY67

Technical Details

Immunogen	E.coli-derived human SynCAM recombinant protein (Position: Q45-P340). Human SynCAM shares 99% amino acid (aa) sequence identity with mouse SynCAM.
Recommended Detection Systems	Boster recommends Enhanced Chemiluminescent Kit with anti-Rabbit IgG (EK1002) for Western blot.
Cross Reactivity	No cross-reactivity with other proteins
Isotype	Rabbit IgG
Form	Lyophilized
Concentration	Adding 0.2 ml of distilled water will yield a concentration of 500 ug/ml.

Purification	Immunogen affinity purified.
Suggested Dilutions	Western blot, 0.1-0.5ug/ml, Human, Mouse, Rat

Anti-SynCAM/CADM1 Antibody Picoband® (PB9136) Images



Western blot analysis of SynCAM using anti-SynCAM antibody (PB9136). Electrophoresis was performed on a 5-20% SDS-PAGE gel at 70V (Stacking gel) / 90V (Resolving gel) for 2-3 hours. The sample well of each lane was loaded with 30 ug of sample under reducing conditions. Lane 1: human hepatocellular carcinoma tumor tissue (HCCT) lysates, Lane 2: human hepatocellular carcinoma paracancerous tissue (HCCP) lysates, Lane 3: human HepG2 whole cell lysates, Lane 4: rat liver tissue lysates, Lane 5: mouse brain tissue lysates, Lane 6: mouse liver tissue lysates. After electrophoresis, proteins were transferred to a nitrocellulose membrane at 150 mA for 50-90 minutes. Blocked the membrane with 5% non-fat milk/TBS for 1.5 hour at RT. The membrane was incubated with rabbit anti-SynCAM antigen affinity purified polyclonal antibody (Catalog # PB9136) at 0.5 ug/mL overnight at 4°C, then washed with TBS-0.1%Tween 3 times with 5 minutes each and probed with a goat anti-rabbit IgG-HRP secondary antibody at a dilution of 1:5000 for 1.5 hour at RT. The signal is developed using an Enhanced Chemiluminescent detection (ECL) kit (Catalog # EK1002) with Tanon 5200 system. A specific band was detected for SynCAM at approximately 49 kDa. The expected band size for SynCAM is at 49 kDa.

Submit a product review to Biocompare.com

Submit a review of this product to Biocompare.com to receive a \$20 Amazon.com giftcard! Your reviews help your fellow scientists make the right decisions. Thank you for your contribution.



Anti-SynCAM/CADM1 Antibody

For Research Use Only. Not for use in diagnostic procedures.