

Anti-KLF6 Antibody Picoband®

Catalog Number: PB9231

About KLF6

Krüppel-like factor 6 (KLF6) is a protein that in humans is encoded by the KLF6 gene. It is a tumor suppressor gene which is located on 10p15.1. This gene encodes a nuclear protein that has three zinc fingers at the end of its C-terminal domain, a serine/threonine-rich central region, and an acidic domain lying within the N-terminal region. The zinc fingers of this protein are responsible for the specific DNA binding with the guanine-rich core promoter elements. The central region might be involved in activation or posttranslational regulatory pathways, and the acidic N-terminal domain might play an important role in the process of transcriptional activation. It is capable of activating transcription approximately 4-fold either on homologous or heterologous promoters. The DNA binding and transcriptional activity of this protein, in conjunction with its expression pattern, suggests that this protein may participate in the regulation and/or maintenance of the basal expression of pregnancy-specific glycoprotein genes and possibly other TATA box-less genes.

Overview

Product Name	Anti-KLF6 Antibody Picoband®
Reactive Species	Human, Rat
Description	Boster Bio Anti-KLF6 Antibody Picoband® catalog # PB9231. Tested in WB applications. This antibody reacts with Human, Rat. The brand Picoband indicates this is a premium antibody that guarantees superior quality, high affinity, and strong signals with minimal background in Western blot applications. Only our best-performing antibodies are designated as Picoband, ensuring unmatched performance.
Application	WB
Clonality	Polyclonal
Formulation	Each vial contains antibody formulated with stabilizing components, 0.9 mg NaCl, 0.2 mg Na ₂ HPO ₄ , and 0.05 mg Na ₃ . *This antibody is supplied in a stabilized formulation. Compatibility with conjugation reactions depends on the chemistry of the conjugation method used. For conjugation methods that are not compatible with the stabilizing components present in this formulation, a carrier-free antibody format is required.
Storage Instructions	Store at -20°C for one year from date of receipt. After reconstitution, at 4°C for one month. It can also be aliquotted and stored frozen at -20°C for six months. Avoid repeated freeze-thaw cycles.
Host	Rabbit
Uniprot ID	Q99612

Technical Details

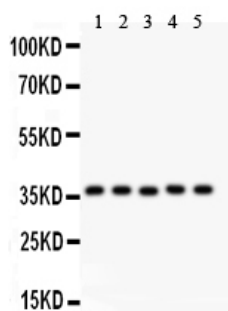
Immunogen	E.coli-derived human KLF6 recombinant protein (Position: E38-N205). Human KLF6 shares 92% and 90% amino acid (aa) sequences identity with mouse and rat KLF6, respectively.
-----------	---

Recommended Detection Systems	Boster recommends Enhanced Chemiluminescent Kit with anti-Rabbit IgG (EK1002) for Western blot.
Cross Reactivity	No cross-reactivity with other proteins
Isotype	Rabbit IgG
Form	Lyophilized
Concentration	Adding 0.2 ml of distilled water will yield a concentration of 500 ug/ml.
Purification	Immunogen affinity purified.
Suggested Dilutions	Western blot, 0.1-0.5ug/ml, Human, Rat

Anti-KLF6 Antibody Picoband® (PB9231) Images



Anti-KLF6 antibody, PB9231, Western blotting All lanes: Anti KLF6 (PB9231) at 0.5ug/ml WB: Recombinant Human KLF6 Protein 0.5ng Predicted bind size: 36KD Observed bind size: 36KD



Anti-KLF6 antibody, PB9231, Western blotting All lanes: Anti KLF6 (PB9231) at 0.5ug/ml Lane 1: Human Placenta Tissue Lysate at 50ug Lane 2: Rat Testis Tissue Lysate at 50ug Lane 3: HELA Whole Cell Lysate at 40ug Lane 4: HEPG2 Whole Cell Lysate at 40ug Lane 5: HEPA Whole Cell Lysate at 40ug Predicted bind size: 32KD Observed bind size: 37KD

Submit a product review to Biocompare.com

Submit a review of this product to Biocompare.com to receive a \$20 Amazon.com giftcard! Your reviews help your fellow scientists make the right decisions. Thank you for your contribution.



Anti-KLF6 Antibody

For Research Use Only. Not for use in diagnostic procedures.