

## Anti-Smad Interacting Protein 1/ZEB2 Antibody Picoband®

Catalog Number: PB9236

### About ZEB2

ZEB2 (Zinc finger E-box-binding homeobox2), also known as SIP1 or ZINC FINGER HOMEBOX 1B (ZFHX1B), is a protein that in humans is encoded by the ZEB2 gene. The ZEB2 gene is a member of the ZEB1/Drosophila Zfh1 family of 2-handed zinc finger/homeodomain proteins and functions as a DNA-binding transcriptional repressor that interacts with activated SMADs, the transducers of TGF-beta signaling, and interacts with the nucleosome remodeling and histone deacetylation (NURD) complex. By radiation hybrid analysis, this gene is mapped to 2q22. It has been found that synthesis of ZEB2 was upregulated following SNAI1 expression in human cell lines, and the expression of SNAI1 in epithelial cells can trigger an epithelial-mesenchyme transition.

### Overview

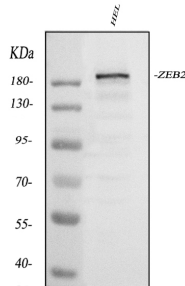
Product Name	Anti-Smad Interacting Protein 1/ZEB2 Antibody Picoband®
Reactive Species	Human
Description	Boster Bio Anti-Smad Interacting Protein 1/ZEB2 Antibody Picoband® catalog # PB9236. Tested in Flow Cytometry, IHC, IHC-F, ICC, WB applications. This antibody reacts with Human. The brand Picoband indicates this is a premium antibody that guarantees superior quality, high affinity, and strong signals with minimal background in Western blot applications. Only our best-performing antibodies are designated as Picoband, ensuring unmatched performance.
Application	Flow Cytometry, IHC, IHC-F, ICC, WB
Clonality	Polyclonal
Formulation	Each vial contains antibody formulated with stabilizing components, 0.9 mg NaCl, 0.2 mg Na <sub>2</sub> HPO <sub>4</sub> , and 0.05 mg NaN <sub>3</sub> . *This antibody is supplied in a stabilized formulation. Compatibility with conjugation reactions depends on the chemistry of the conjugation method used. For conjugation methods that are not compatible with the stabilizing components present in this formulation, a carrier-free antibody format is required.
Storage Instructions	Store at -20°C for one year from date of receipt. After reconstitution, at 4°C for one month. It can also be aliquotted and stored frozen at -20°C for six months. Avoid repeated freeze-thaw cycles.
Host	Rabbit
Uniprot ID	O60315

### Technical Details

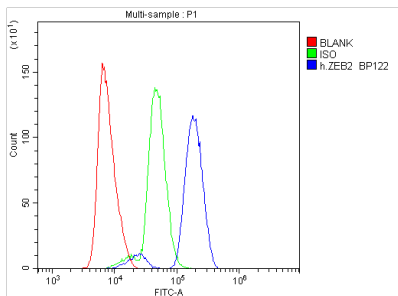
Immunogen	E.coli-derived human ZEB2 recombinant protein (Position: M1-P200). Human ZEB2 shares 92% amino acid (aa) sequence identity with mouse ZEB2.
Recommended Detection Systems	Boster recommends Enhanced Chemiluminescent Kit with anti-Rabbit IgG (EK1002) for Western

	blot, supported by SA1022 in IHC(P) and IHC(F).
Cross Reactivity	No cross-reactivity with other proteins
Isotype	Rabbit IgG
Form	Lyophilized
Concentration	Adding 0.2 ml of distilled water will yield a concentration of 500 ug/ml.
Purification	Immunogen affinity purified.
Suggested Dilutions	Western blot, 0.1-0.5ug/ml, Human Immunohistochemistry (Paraffin-embedded Section), 0.5-1ug/ml, Human, Mouse, Rat Immunohistochemistry (Frozen Section), 0.5-1ug/ml, Human Immunocytochemistry, 0.5-1ug/ml, Human Flow Cytometry (Fixed), 1-3ug/1x10 <sup>6</sup> cells, Human

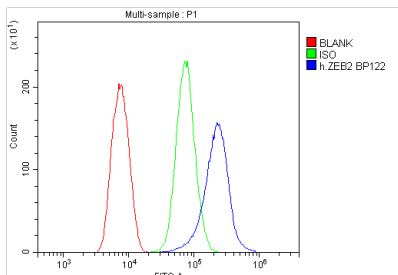
## Anti-Smad Interacting Protein 1/ZEB2 Antibody Picoband® (PB9236) Images



Western blot analysis of ZEB2 using anti-ZEB2 antibody (PB9236). Electrophoresis was performed on a 5-20% SDS-PAGE gel at 70V (Stacking gel) / 90V (Resolving gel) for 2-3 hours. The sample well of each lane was loaded with 30 ug of sample under reducing conditions. Lane 1: human HEL whole cell lysates. After electrophoresis, proteins were transferred to a nitrocellulose membrane at 150 mA for 50-90 minutes. Blocked the membrane with 5% non-fat milk/TBS for 1.5 hour at RT. The membrane was incubated with rabbit anti-ZEB2 antigen affinity purified polyclonal antibody (Catalog # PB9236) at 0.5 ug/mL overnight at 4°C, then washed with TBS-0.1%Tween 3 times with 5 minutes each and probed with a goat anti-rabbit IgG-HRP secondary antibody at a dilution of 1:5000 for 1.5 hour at RT. The signal is developed using an Enhanced Chemiluminescent detection (ECL) kit (Catalog # EK1002) with Tanon 5200 system. A specific band was detected for ZEB2 at approximately 200 kDa. The expected band size for ZEB2 is at 200 kDa.

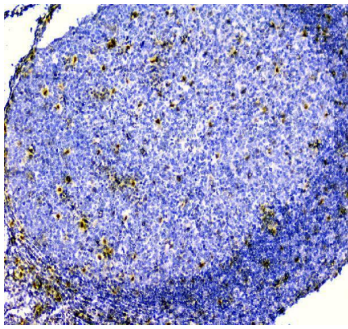


Flow Cytometry analysis of U937 cells using anti-ZEB2 antibody (PB9236). Overlay histogram showing U937 cells stained with PB9236 (Blue line). To facilitate intracellular staining, cells were fixed with 4% paraformaldehyde and permeabilized with permeabilization buffer. The cells were blocked with 10% normal goat serum. And then incubated with rabbit anti-ZEB2 Antibody (PB9236, 1ug/1x10<sup>6</sup> cells) for 30 min at 20°C. DyLight®488 conjugated goat anti-rabbit IgG (BA1127, 5-10ug/1x10<sup>6</sup> cells) was used as secondary antibody for 30 minutes at 20°C. Isotype control antibody (Green line) was rabbit IgG (1ug/1x10<sup>6</sup>) used under the same conditions. Unlabelled sample without incubation with primary antibody and secondary antibody (Red line) was used as a blank control.

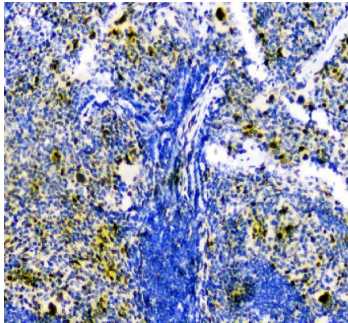


Flow Cytometry analysis of THP-1 cells using anti-ZEB2 antibody (PB9236). Overlay histogram showing THP-1 cells stained with PB9236 (Blue line). To facilitate intracellular staining, cells were fixed with 4% paraformaldehyde and permeabilized with permeabilization buffer. The cells were blocked with 10% normal goat serum. And then incubated with rabbit anti-ZEB2 Antibody (PB9236, 1ug/1x10<sup>6</sup> cells) for 30 min at 20°C. DyLight®488 conjugated goat anti-rabbit IgG (BA1127, 5-10ug/1x10<sup>6</sup> cells) was used as secondary antibody for 30 minutes at 20°C. Isotype control antibody (Green line) was rabbit IgG (1ug/1x10<sup>6</sup>) used under the same conditions. Unlabelled sample without incubation with primary antibody and secondary antibody (Red line) was used as a blank control.

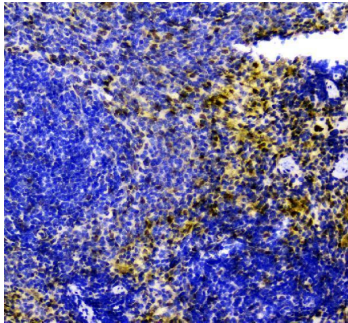
IHC analysis of ZEB2 using anti-ZEB2 antibody (PB9236). ZEB2 was detected in a paraffin-embedded section of



human tonsil tissue. Heat mediated antigen retrieval was performed in EDTA buffer (pH 8.0, epitope retrieval solution). The tissue section was blocked with 10% goat serum. The tissue section was then incubated with 1 ug/ml rabbit anti-ZEB2 Antibody (PB9236) overnight at 4°C. Peroxidase Conjugated Goat Anti-rabbit IgG was used as secondary antibody and incubated for 30 minutes at 37°C. The tissue section was developed using HRP Conjugated Rabbit IgG Super Vision Assay Kit (Catalog # SV0002) with DAB as the chromogen.



IHC analysis of ZEB2 using anti-ZEB2 antibody (PB9236). ZEB2 was detected in a paraffin-embedded section of mouse spleen tissue. Heat mediated antigen retrieval was performed in EDTA buffer (pH 8.0, epitope retrieval solution). The tissue section was blocked with 10% goat serum. The tissue section was then incubated with 1 ug/ml rabbit anti-ZEB2 Antibody (PB9236) overnight at 4°C. Peroxidase Conjugated Goat Anti-rabbit IgG was used as secondary antibody and incubated for 30 minutes at 37°C. The tissue section was developed using HRP Conjugated Rabbit IgG Super Vision Assay Kit (Catalog # SV0002) with DAB as the chromogen.



IHC analysis of ZEB2 using anti-ZEB2 antibody (PB9236). ZEB2 was detected in a paraffin-embedded section of rat spleen tissue. Heat mediated antigen retrieval was performed in EDTA buffer (pH 8.0, epitope retrieval solution). The tissue section was blocked with 10% goat serum. The tissue section was then incubated with 1 ug/ml rabbit anti-ZEB2 Antibody (PB9236) overnight at 4°C. Peroxidase Conjugated Goat Anti-rabbit IgG was used as secondary antibody and incubated for 30 minutes at 37°C. The tissue section was developed using HRP Conjugated Rabbit IgG Super Vision Assay Kit (Catalog # SV0002) with DAB as the chromogen.

## Submit a product review to Biocompare.com

Submit a review of this product to Biocompare.com to receive a \$20 Amazon.com giftcard! Your reviews help your fellow scientists make the right decisions. Thank you for your contribution.



Anti-Smad Interacting Protein 1/ZEB2 Antibody

For Research Use Only. Not for use in diagnostic procedures.