

Anti-Kininogen 1/KNG1 Antibody Picoband®

Catalog Number: PB9278

About KNG1

Kininogen-1 (KNG1), also known as BDK or bradykinin is a protein that in humans is encoded by the KNG1 gene. It is mapped to 3q27.3. The KNG1 gene uses alternative splicing to generate two different proteins – high – molecular - weight kininogen (HMWK) and low - molecular- weight kininogen (LMWK). HMWK is essential for blood coagulation and assembly of the kallikrein-kinin system. Also, KNG1, a peptide causing numerous physiological effects, is released from HMWK. In contrast to HMWK, LMWK is not involved in blood coagulation. In addition to that, KNG1 is a constituent of the blood coagulation system as well as the kinin-kallikrein system.

Overview

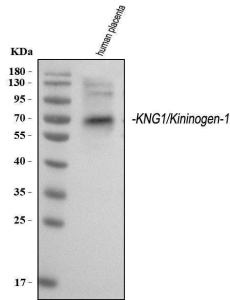
| | |
|----------------------|--|
| Product Name | Anti-Kininogen 1/KNG1 Antibody Picoband® |
| Reactive Species | Human |
| Description | Boster Bio Anti-Kininogen 1/KNG1 Antibody Picoband® catalog # PB9278. Tested in WB applications. This antibody reacts with Human. The brand Picoband indicates this is a premium antibody that guarantees superior quality, high affinity, and strong signals with minimal background in Western blot applications. Only our best-performing antibodies are designated as Picoband, ensuring unmatched performance. |
| Application | WB |
| Clonality | Polyclonal |
| Formulation | Each vial contains antibody formulated with stabilizing components, 0.9 mg NaCl, 0.2 mg Na ₂ HPO ₄ , and 0.05 mg NaN ₃ . *This antibody is supplied in a stabilized formulation. Compatibility with conjugation reactions depends on the chemistry of the conjugation method used. For conjugation methods that are not compatible with the stabilizing components present in this formulation, a carrier-free antibody format is required. |
| Storage Instructions | Store at -20°C for one year from date of receipt. After reconstitution, at 4°C for one month. It can also be aliquotted and stored frozen at -20°C for six months. Avoid repeated freeze-thaw cycles. |
| Host | Rabbit |
| Uniprot ID | P01042 |

Technical Details

| | |
|-------------------------------|---|
| Immunogen | E.coli-derived human Kininogen 1 recombinant protein (Position: Q19-N210). Human Kininogen 1 shares 63% and 66% amino acid (aa) sequence identity with mouse and rat Kininogen 1, respectively. |
| Recommended Detection Systems | Boster recommends Enhanced Chemiluminescent Kit with anti-Rabbit IgG (EK1002) for Western blot. |

| | |
|---------------------|---|
| Cross Reactivity | No cross-reactivity with other proteins |
| Isotype | Rabbit IgG |
| Form | Lyophilized |
| Concentration | Adding 0.2 ml of distilled water will yield a concentration of 500 ug/ml. |
| Purification | Immunogen affinity purified. |
| Suggested Dilutions | Western blot, 0.1-0.5ug/ml, Human |

Anti-Kininogen 1/KNG1 Antibody Picoband® (PB9278) Images



Western blot analysis of Kininogen 1/KNG1 using anti-Kininogen 1/KNG1 antibody (PB9278). Electrophoresis was performed on a 5-20% SDS-PAGE gel at 70V (Stacking gel) / 90V (Resolving gel) for 2-3 hours. The sample well of each lane was loaded with 30 ug of sample under reducing conditions. Lane 1: human placenta tissue lysates. After electrophoresis, proteins were transferred to a nitrocellulose membrane at 150 mA for 50-90 minutes. Blocked the membrane with 5% non-fat milk/TBS for 1.5 hour at RT. The membrane was incubated with rabbit anti-Kininogen 1/KNG1 antigen affinity purified polyclonal antibody (Catalog # PB9278) at 0.5 ug/mL overnight at 4°C, then washed with TBS-0.1%Tween 3 times with 5 minutes each and probed with a goat anti-rabbit IgG-HRP secondary antibody at a dilution of 1:5000 for 1.5 hour at RT. The signal is developed using an Enhanced Chemiluminescent detection (ECL) kit (Catalog # EK1002) with Tanon 5200 system. A specific band was detected for Kininogen 1/KNG1 at approximately 72 kDa. The expected band size for Kininogen 1/KNG1 is at 72 kDa.

Submit a product review to Biocompare.com

Submit a review of this product to Biocompare.com to receive a \$20 Amazon.com giftcard! Your reviews help your fellow scientists make the right decisions. Thank you for your contribution.



Anti-Kininogen 1/KNG1 Antibody

For Research Use Only. Not for use in diagnostic procedures.