

Anti-PKC epsilon/PRKCE Antibody Picoband®

Catalog Number: PB9320

About PRKCE

Protein kinase C epsilon type, also known as PKCE, is an enzyme that in humans is encoded by the PRKCE gene. The protein encoded by this gene is one of the PKC family members. PRKCE is mapped to 2p21. This kinase has been shown to be involved in many different cellular functions, such as apoptosis, cardioprotection from ischemia, heat shock response, as well as insulin exocytosis. It has been found that activation of PRKCE can induce VR1 channel activity at room temperature in the absence of any other agonist. PRKCE gene plays a role in apoptosis signaling pathways in thyroid cells and it has been indicated that a naturally occurring PRKCE mutant that functions as a dominant negative can block cell death triggered by a variety of stimuli. Expression of PRKCE inhibits chemotherapy-induced caspase-3 activation and apoptosis, thereby leading to cell survival.

Overview

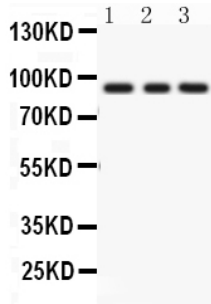
| | |
|----------------------|--|
| Product Name | Anti-PKC epsilon/PRKCE Antibody Picoband® |
| Reactive Species | Human, Mouse, Rat |
| Description | Boster Bio Anti-PKC epsilon/PRKCE Antibody Picoband® catalog # PB9320. Tested in IHC, WB applications. This antibody reacts with Human, Mouse, Rat. The brand Picoband indicates this is a premium antibody that guarantees superior quality, high affinity, and strong signals with minimal background in Western blot applications. Only our best-performing antibodies are designated as Picoband, ensuring unmatched performance. |
| Application | IHC, WB |
| Clonality | Polyclonal |
| Formulation | Each vial contains antibody formulated with stabilizing components, 0.9 mg NaCl, 0.2 mg Na ₂ HPO ₄ , and 0.05 mg NaN ₃ . *This antibody is supplied in a stabilized formulation. Compatibility with conjugation reactions depends on the chemistry of the conjugation method used. For conjugation methods that are not compatible with the stabilizing components present in this formulation, a carrier-free antibody format is required. |
| Storage Instructions | Store at -20°C for one year from date of receipt. After reconstitution, at 4°C for one month. It can also be aliquotted and stored frozen at -20°C for six months. Avoid repeated freeze-thaw cycles. |
| Host | Rabbit |
| Uniprot ID | Q02156 |

Technical Details

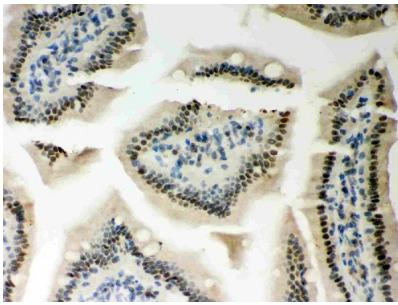
| | |
|-------------------------------|--|
| Immunogen | E.coli-derived human PKC epsilon recombinant protein (Position: Q53-R236). Human PKC epsilon shares 99% amino acid (aa) sequence identity with both mouse and rat PKC epsilon. |
| Recommended Detection Systems | Boster recommends Enhanced Chemiluminescent Kit with anti-Rabbit IgG (EK1002) for Western |

| | |
|---------------------|--|
| | blot, and HRP Conjugated anti-Rabbit IgG Super Vision Assay Kit (SV0002-1) for IHC(P). |
| Cross Reactivity | No cross-reactivity with other proteins |
| Isotype | Rabbit IgG |
| Form | Lyophilized |
| Concentration | Adding 0.2 ml of distilled water will yield a concentration of 500 ug/ml. |
| Purification | Immunogen affinity purified. |
| Suggested Dilutions | Immunohistochemistry (Paraffin-embedded Section), 0.5-1ug/ml, Mouse, Rat, Human Western blot, 0.1-0.5ug/ml, Human, Mouse, Rat |

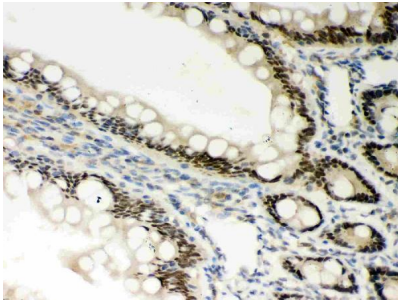
Anti-PKC epsilon/PRKCE Antibody Picoband® (PB9320) Images



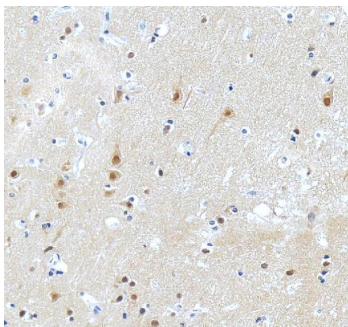
Anti-PKC epsilon Picoband antibody, PB9320, Western blotting All lanes: Anti PKC epsilon (PB9320) at 0.5ug/ml Lane 1: Rat Brain Tissue Lysate at 50ug Lane 2: Mouse Brain Tissue Lysate at 50ug Lane 3: MCF-7 Whole Cell Lysate at 40ug Predicted bind size: 88KD Observed bind size: 88KD



Anti-PKC epsilon Picoband antibody, PB9320, IHC(P) IHC(P):
Mouse Intestine Tissue

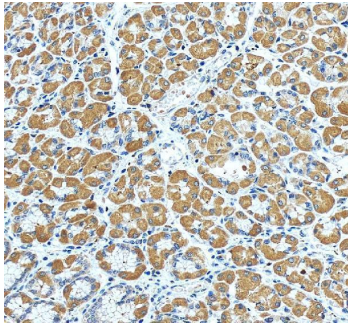


Anti-PKC epsilon Picoband antibody, PB9320, IHC(P) IHC(P):
Rat Intestine Tissue

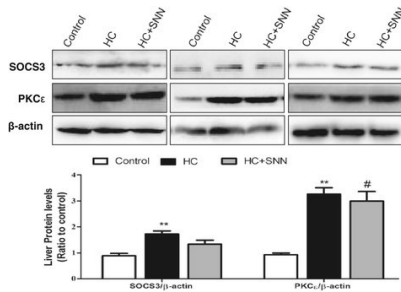


IHC analysis of PKC Epsilon/PRKCE using anti-PKC Epsilon/PRKCE antibody (PB9320). PKC Epsilon/PRKCE was detected in a paraffin-embedded section of human brain tissue. Heat mediated antigen retrieval was performed in EDTA buffer (pH 8.0, epitope retrieval solution). The tissue section was blocked with 10% goat serum. The tissue section was then incubated with 2 ug/ml rabbit anti-PKC Epsilon/PRKCE Antibody (PB9320) overnight at 4°C. Peroxidase Conjugated Goat Anti-rabbit IgG was used as secondary antibody and incubated for 30 minutes at 37°C. The tissue section was developed using HRP Conjugated Rabbit IgG Super Vision Assay Kit (Catalog # SV0002) with DAB as the chromogen.

IHC analysis of PKC Epsilon/PRKCE using anti-PKC Epsilon/PRKCE antibody (PB9320). PKC Epsilon/PRKCE was detected in a paraffin-embedded section of human stomach tissue. Heat mediated antigen retrieval was performed in EDTA buffer (pH 8.0, epitope retrieval solution). The tissue



section was blocked with 10% goat serum. The tissue section was then incubated with 2 ug/ml rabbit anti-PKC Epsilon/PRKCE Antibody (PB9320) overnight at 4°C. Peroxidase Conjugated Goat Anti-rabbit IgG was used as secondary antibody and incubated for 30 minutes at 37°C. The tissue section was developed using HRP Conjugated Rabbit IgG Super Vision Assay Kit (Catalog # SV0002) with DAB as the chromogen.



The effect of SNN on SOCS3 and PKC epsilon expression in the liver. Male Wistar rats (6 weeks old) were placed on chow diet or HC diet for 8 weeks followed by the 4-week SNN intervention. Livers were collected, the protein expression of SOCS3 and PKCepsilon was analysed by Western blots. Data (mean ± SE) are presented as relative expression levels compared to that of control group. ** P

3 Publications Citing This Product

1. PubMed ID: 10.1186/s12967-014-0236-8, Extracts from Salvia-Nelumbinis naturalis alleviate hepatosteatosis via improving hepatic insulin sensitivity
2. PubMed ID: 27602102, Low expression of PKC? and high expression of KRAS predict poor prognosis in patients with colorectal cancer
3. PubMed ID: 25160038, Extracts from Salvia-Nelumbinis naturalis alleviate hepatosteatosis via improving hepatic insulin sensitivity

Visit bosterbio.com/anti-pkc-epsilon-picoband-trade-antibody-pb9320-boster.html to see all 3 publications.

Submit a product review to Biocompare.com

Submit a review of this product to Biocompare.com to receive a \$20 Amazon.com giftcard! Your reviews help your fellow scientists make the right decisions. Thank you for your contribution.



Anti-PKC epsilon/PRKCE Antibody

For Research Use Only. Not for use in diagnostic procedures.