

Anti-Phospholipase D1/PLD1 Antibody Picoband®

Catalog Number: PB9380

About PLD1

By somatic cell hybrid analysis, PLD1 is mapped to 3q26.31. This gene encodes a phosphatidylcholine-specific phospholipase which catalyzes the hydrolysis of phosphatidylcholine in order to yield phosphatidic acid and choline. The enzyme may play a role in signal transduction and subcellular trafficking. Alternative splicing results in multiple transcript variants with both catalytic and regulatory properties. And PLD1 disrupted association of gamma-secretase protein components, independent of PLD1 catalytic activity. What's more, PLD1 regulates intracellular trafficking of beta-amyloid, distinct from its effect on gamma-secretase activity.

Overview

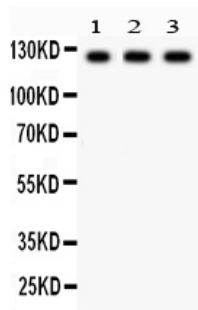
Product Name	Anti-Phospholipase D1/PLD1 Antibody Picoband®
Reactive Species	Human, Mouse
Description	Boster Bio Anti-Phospholipase D1/PLD1 Antibody Picoband® catalog # PB9380. Tested in WB applications. This antibody reacts with Human, Mouse. The brand Picoband indicates this is a premium antibody that guarantees superior quality, high affinity, and strong signals with minimal background in Western blot applications. Only our best-performing antibodies are designated as Picoband, ensuring unmatched performance.
Application	WB
Clonality	Polyclonal
Formulation	Each vial contains 4mg Trehalose, 0.9mg NaCl, 0.2mg Na ₂ HPO ₄ , 0.05mg NaN ₃ .
Storage Instructions	Store at -20°C for one year from date of receipt. After reconstitution, at 4°C for one month. It can also be aliquotted and stored frozen at -20°C for six months. Avoid repeated freeze-thaw cycles.
Host	Rabbit
Uniprot ID	Q13393

Technical Details

Immunogen	E.coli-derived human PLD1 recombinant protein (Position: M1-H330). Human PLD1 shares 91.8% and 90.9% amino acid (aa) sequence identity with mouse and rat PLD1, respectively.
Recommended Detection Systems	Boster recommends Enhanced Chemiluminescent Kit with anti-Rabbit IgG (EK1002) for Western blot.
Cross Reactivity	No cross-reactivity with other proteins.
Isotype	Rabbit IgG
Form	Lyophilized

Concentration	Adding 0.2 ml of distilled water will yield a concentration of 500 ug/ml.
Purification	Immunogen affinity purified.
Suggested Dilutions	Western blot, 0.1-0.5ug/ml, Human, Mouse

Anti-Phospholipase D1/PLD1 Antibody Picoband® (PB9380) Images



Anti-PLD1 Picoband antibody, PB9380, Western blotting
All lanes: Anti PLD1 (PB9380) at 0.5ug/ml
Lane 1: Mouse Cardiac Muscle Tissue Lysate at 50ug
Lane 2: 22RV1 Whole Cell Lysate at 40ug
Lane 3: HELA Whole Cell Lysate at 40ug
Predicted bind size: 124KD
Observed bind size: 124KD

Submit a product review to Biocompare.com

Submit a review of this product to Biocompare.com to receive a \$20 Amazon.com giftcard! Your reviews help your fellow scientists make the right decisions. Thank you for your contribution.



Anti-Phospholipase D1/PLD1 Antibody

For Research Use Only. Not for use in diagnostic procedures.