

## Anti-CIB1 Antibody Picoband®

Catalog Number: PB9489

### About CIB1

Calcium and integrin-binding protein 1 is a protein that in humans is encoded by the CIB1 gene. This gene encodes a member of the EF-hand domain-containing calcium-binding superfamily. And this protein interacts with many other proteins, including the platelet integrin alpha-IIb-beta-3, DNA-dependent protein kinase, presenilin-2, focal adhesion kinase, p21 activated kinase, and protein kinase D. Moreover, the encoded protein may be involved in cell survival and proliferation, and is associated with several disease states including cancer and Alzheimer's disease. Alternative splicing results in multiple transcript variants.

### Overview

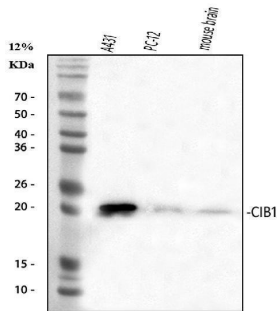
|                      |  |
|----------------------|--|
| Product Name         | Anti-CIB1 Antibody Picoband®   |
| Reactive Species     | Human, Mouse, Rat  |
| Description          | Boster Bio Anti-CIB1 Antibody Picoband® catalog # PB9489. Tested in WB applications. This antibody reacts with Human, Mouse, Rat. The brand Picoband indicates this is a premium antibody that guarantees superior quality, high affinity, and strong signals with minimal background in Western blot applications. Only our best-performing antibodies are designated as Picoband, ensuring unmatched performance.  |
| Application          | WB   |
| Clonality            | Polyclonal   |
| Formulation          | Each vial contains antibody formulated with stabilizing components, 0.9 mg NaCl, 0.2 mg Na <sub>2</sub> HPO <sub>4</sub> , and 0.05 mg NaN <sub>3</sub> .<br>*This antibody is supplied in a stabilized formulation.<br>Compatibility with conjugation reactions depends on the chemistry of the conjugation method used. For conjugation methods that are not compatible with the stabilizing components present in this formulation, a carrier-free antibody format is required. |
| Storage Instructions | Store at -20°C for one year from date of receipt. After reconstitution, at 4°C for one month. It can also be aliquotted and stored frozen at -20°C for six months. Avoid repeated freeze-thaw cycles.  |
| Host                 | Rabbit   |
| Uniprot ID           | Q99828   |

### Technical Details

|                               |  |
|-------------------------------|--|
| Immunogen                     | E.coli-derived human CIB1 recombinant protein (Position: S6-L191). Human CIB1 shares 93.5% amino acid (aa) sequence identity with both mouse and rat CIB1. |
| Recommended Detection Systems | Boster recommends Enhanced Chemiluminescent Kit with anti-Rabbit IgG (EK1002) for Western blot.  |

|                     |   |
|---------------------|---|
| Cross Reactivity    | No cross-reactivity with other proteins                                   |
| Isotype             | Rabbit IgG  |
| Form                | Lyophilized   |
| Concentration       | Adding 0.2 ml of distilled water will yield a concentration of 500 ug/ml. |
| Purification        | Immunogen affinity purified.  |
| Suggested Dilutions | Western blot, 0.1-0.5ug/ml, Human, Mouse, Rat                             |

## Anti-CIB1 Antibody Picoband® (PB9489) Images



Western blot analysis of CIB1 using anti-CIB1 antibody (PB9489). Electrophoresis was performed on a 5-20% SDS-PAGE gel at 70V (Stacking gel) / 90V (Resolving gel) for 2-3 hours. The sample well of each lane was loaded with 30 ug of sample under reducing conditions. Lane 1: human A431 whole cell lysates, Lane 2: rat PC-12 whole cell lysates, Lane 3: mouse brain tissue lysates. After electrophoresis, proteins were transferred to a nitrocellulose membrane at 150 mA for 50-90 minutes. Blocked the membrane with 5% non-fat milk/TBS for 1.5 hour at RT. The membrane was incubated with rabbit anti-CIB1 antigen affinity purified polyclonal antibody (Catalog # PB9489) at 0.5 ug/mL overnight at 4°C, then washed with TBS-0.1%Tween 3 times with 5 minutes each and probed with a goat anti-rabbit IgG-HRP secondary antibody at a dilution of 1:5000 for 1.5 hour at RT. The signal is developed using an Enhanced Chemiluminescent detection (ECL) kit (Catalog # EK1002) with Tanon 5200 system. A specific band was detected for CIB1 at approximately 22 kDa. The expected band size for CIB1 is at 27 kDa.

### Submit a product review to Biocompare.com

Submit a review of this product to Biocompare.com to receive a \$20 Amazon.com giftcard! Your reviews help your fellow scientists make the right decisions. Thank you for your contribution.



### Anti-CIB1 Antibody

For Research Use Only. Not for use in diagnostic procedures.