

Anti-Butyrylcholinesterase/BCHE Antibody Picoband®

Catalog Number: PB9526

About Bche

Butyrylcholinesterase (BCHE, or BuChE), also known as pseudocholinesterase or plasma cholinesterase, is a non-specific cholinesterase enzyme that hydrolyses many different choline esters. In humans, it is found primarily in the liver and is encoded by the BCHE gene. Mutant alleles at the BCHE locus are responsible for suxamethonium sensitivity. Homozygous persons sustain prolonged apnea after administration of the muscle relaxant suxamethonium in connection with surgical anesthesia. The activity of pseudocholinesterase in the serum is low and its substrate behavior is atypical. In the absence of the relaxant, the homozygote is at no known disadvantage.

Overview

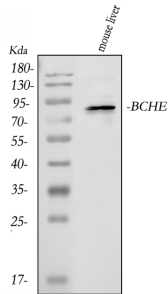
Product Name	Anti-Butyrylcholinesterase/BCHE Antibody Picoband®
Reactive Species	Mouse
Description	Boster Bio Anti-Butyrylcholinesterase/BCHE Antibody Picoband® catalog # PB9526. Tested in WB applications. This antibody reacts with Mouse. The brand Picoband indicates this is a premium antibody that guarantees superior quality, high affinity, and strong signals with minimal background in Western blot applications. Only our best-performing antibodies are designated as Picoband, ensuring unmatched performance.
Application	WB
Clonality	Polyclonal
Formulation	Each vial contains 4 mg Trehalose, 0.9 mg NaCl and 0.2 mg Na ₂ HPO ₄ .
Storage Instructions	Store at -20°C for one year from date of receipt. After reconstitution, at 4°C for one month. It can also be aliquotted and stored frozen at -20°C for six months. Avoid repeated freeze-thaw cycles.
Host	Rabbit
Uniprot ID	Q03311

Technical Details

Immunogen	E.coli-derived mouse BCHE recombinant protein (Position: K263-E571). Mouse BCHE shares 78% amino acid (aa) sequence identity with human BCHE.
Recommended Detection Systems	Boster recommends Enhanced Chemiluminescent Kit with anti-Rabbit IgG (EK1002) for Western blot.
Cross Reactivity	No cross-reactivity with other proteins
Isotype	Rabbit IgG
Form	Lyophilized

Concentration	Adding 0.2 ml of distilled water will yield a concentration of 500 ug/ml.
Purification	Immunogen affinity purified.
Suggested Dilutions	Western blot, 0.1-0.5ug/ml, Mouse

Anti-Butyrylcholinesterase/BCHE Antibody Picoband® (PB9526) Images



Western blot analysis of BCHE using anti-BCHE antibody (PB9526). Electrophoresis was performed on a 5-20% SDS-PAGE gel at 70V (Stacking gel) / 90V (Resolving gel) for 2-3 hours. The sample well of each lane was loaded with 30 ug of sample under reducing conditions. Lane 1: mouse liver tissue lysates. After electrophoresis, proteins were transferred to a nitrocellulose membrane at 150 mA for 50-90 minutes. Blocked the membrane with 5% non-fat milk/TBS for 1.5 hour at RT. The membrane was incubated with rabbit anti-BCHE antigen affinity purified polyclonal antibody (Catalog # PB9526) at 0.5 ug/mL overnight at 4°C, then washed with TBS-0.1%Tween 3 times with 5 minutes each and probed with a goat anti-rabbit IgG-HRP secondary antibody at a dilution of 1:5000 for 1.5 hour at RT. The signal is developed using an Enhanced Chemiluminescent detection (ECL) kit (Catalog # EK1002) with Tanon 5200 system. A specific band was detected for BCHE at approximately 85-90 kDa. The expected band size for BCHE is at 68 kDa.

Submit a product review to Biocompare.com

Submit a review of this product to Biocompare.com to receive a \$20 Amazon.com giftcard! Your reviews help your fellow scientists make the right decisions. Thank you for your contribution.



Anti-Butyrylcholinesterase/BCHE Antibody

For Research Use Only. Not for use in diagnostic procedures.