

## Anti-Parvin alpha/PARVA Antibody Picoband®

Catalog Number: PB9555

### About PARVA

Parvin alpha is a protein that in humans is encoded by the PARVA gene. It is located on 11p15.3. PARVA belongs to the parvin family of actin-binding proteins. Parvins are associated with focal contacts and contain calponin homology domains that bind to actin filaments. The encoded protein is part of the integrin-linked kinase signaling complex and plays a role in cell adhesion, motility and survival.

### Overview

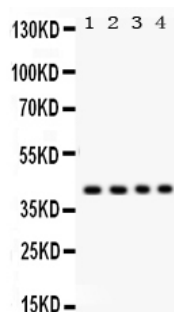
Product Name	Anti-Parvin alpha/PARVA Antibody Picoband®
Reactive Species	Human, Mouse, Rat
Description	Boster Bio Anti-Parvin alpha/PARVA Antibody Picoband® catalog # PB9555. Tested in IHC, WB applications. This antibody reacts with Human, Mouse, Rat. The brand Picoband indicates this is a premium antibody that guarantees superior quality, high affinity, and strong signals with minimal background in Western blot applications. Only our best-performing antibodies are designated as Picoband, ensuring unmatched performance.
Application	IHC, WB
Clonality	Polyclonal
Formulation	Each vial contains antibody formulated with stabilizing components, 0.9 mg NaCl, 0.2 mg Na <sub>2</sub> HPO <sub>4</sub> , and 0.05 mg NaN <sub>3</sub> . *This antibody is supplied in a stabilized formulation. Compatibility with conjugation reactions depends on the chemistry of the conjugation method used. For conjugation methods that are not compatible with the stabilizing components present in this formulation, a carrier-free antibody format is required.
Storage Instructions	Store at -20°C for one year from date of receipt. After reconstitution, at 4°C for one month. It can also be aliquotted and stored frozen at -20°C for six months. Avoid repeated freeze-thaw cycles.
Host	Rabbit
Uniprot ID	Q9NVD7

### Technical Details

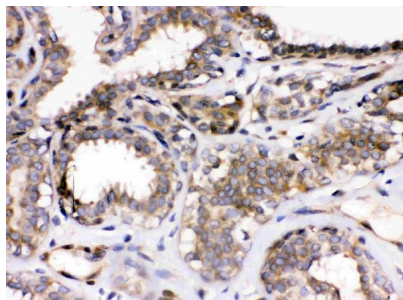
Immunogen	A synthetic peptide corresponding to a sequence in the middle region of human Parvin alpha, identical to the related mouse sequence, and different from the related rat sequence by one amino acid.
Recommended Detection Systems	Boster recommends Enhanced Chemiluminescent Kit with anti-Rabbit IgG (EK1002) for Western blot, and HRP Conjugated anti-Rabbit IgG Super Vision Assay Kit (SV0002-1) for IHC(P).
Cross Reactivity	No cross-reactivity with other proteins

Isotype	Rabbit IgG
Form	Lyophilized
Concentration	Adding 0.2 ml of distilled water will yield a concentration of 500 ug/ml.
Purification	Immunogen affinity purified.
Suggested Dilutions	Immunohistochemistry (Paraffin-embedded Section), 0.5-1ug/ml, Human Western blot, 0.1-0.5ug/ml, Human, Mouse, Rat

## Anti-Parvin alpha/PARVA Antibody Picoband® (PB9555) Images



Western blot analysis of Parvin alpha using anti-Parvin alpha antibody (PB9555). Electrophoresis was performed on a 5-20% SDS-PAGE gel at 70V (Stacking gel) / 90V (Resolving gel) for 2-3 hours. Lane 1: Rat Liver Tissue Lysate at 50ug, Lane 2: HELA Whole Cell Lysate at 40ug, Lane 3: SW620 Whole Cell Lysate at 40ug, Lane 4: HEPA Whole Cell Lysate at 40ug. After electrophoresis, proteins were transferred to a nitrocellulose membrane at 150 mA for 50-90 minutes. Blocked the membrane with 5% non-fat milk/TBS for 1.5 hour at RT. The membrane was incubated with rabbit anti-Parvin alpha antigen affinity purified polyclonal antibody (Catalog # PB9555) at 0.5 ug/mL overnight at 4°C, then washed with TBS-0.1%Tween 3 times with 5 minutes each and probed with a goat anti-rabbit IgG-HRP secondary antibody at a dilution of 1:5000 for 1.5 hour at RT. The signal is developed using an Enhanced Chemiluminescent detection (ECL) kit (Catalog # EK1002) with Tanon 5200 system. A specific band was detected for Parvin alpha at approximately 42 kDa. The expected band size for Parvin alpha is at 42 kDa.



IHC analysis of Parvin alpha using anti-Parvin alpha antibody (PB9555). Parvin alpha was detected in a paraffin-embedded section of human mammary cancer tissue. Heat mediated antigen retrieval was performed in EDTA buffer (pH 8.0, epitope retrieval solution). The tissue section was blocked with 10% goat serum. The tissue section was then incubated with 1 ug/ml rabbit anti-Parvin alpha Antibody (PB9555) overnight at 4°C. Biotinylated goat anti-rabbit IgG was used as secondary antibody and incubated for 30 minutes at 37°C. The tissue section was developed using Streptavidin-Biotin-Complex (SABC) (Catalog # SA1022) with DAB as the chromogen.

### Submit a product review to Biocompare.com

Submit a review of this product to Biocompare.com to receive a \$20 Amazon.com giftcard! Your reviews help your fellow scientists make the right decisions. Thank you for your contribution.



Anti-Parvin alpha/PARVA Antibody

For Research Use Only. Not for use in diagnostic procedures.