

## Anti-Lipocalin 2/LCN2 Antibody Picoband®

Catalog Number: PB9608

### About Lcn2

Europhile gelatinase-associated lipocalin (NGAL) is a protein that in humans is encoded by the LCN2 gene. The binding of lipocalin-2 to bacterial siderophores is important in the innate immune response to bacterial infection. Upon encountering invading bacteria the toll-like receptors on immune cells stimulate the synthesis and secretion of lipocalin-2. Secreted lipocalin-2 then limits bacterial growth by sequestering iron-containing siderophores. Lipocalin-2 also functions as a growth factor.

### Overview

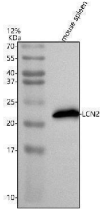
Product Name	Anti-Lipocalin 2/LCN2 Antibody Picoband®
Reactive Species	Mouse, Rat
Description	Boster Bio Anti-Lipocalin 2/LCN2 Antibody Picoband® catalog # PB9608. Tested in ELISA, IHC, WB applications. This antibody reacts with Mouse, Rat. The brand Picoband indicates this is a premium antibody that guarantees superior quality, high affinity, and strong signals with minimal background in Western blot applications. Only our best-performing antibodies are designated as Picoband, ensuring unmatched performance.
Application	ELISA, IHC, WB
Clonality	Polyclonal
Formulation	Each vial contains 4mg Trehalose, 0.9mg NaCl, 0.2mg Na <sub>2</sub> HPO <sub>4</sub> , 0.05mg NaN <sub>3</sub> .
Storage Instructions	Store at -20°C for one year from date of receipt. After reconstitution, at 4°C for one month. It can also be aliquotted and stored frozen at -20°C for six months. Avoid repeated freeze-thaw cycles.
Host	Rabbit
Uniprot ID	P11672

### Technical Details

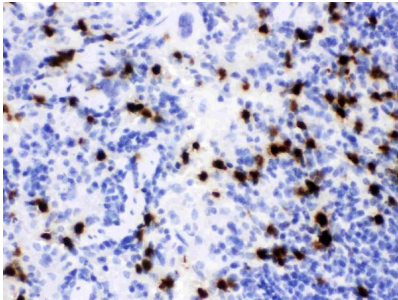
Immunogen	E. coli-derived mouse <a href="#">Lipocalin 2</a> recombinant protein (Position: Q21-N200). Mouse Lipocalin 2 shares 62 % and 81.1 % amino acid (aa) sequence identity with human and rat Lipocalin 2, respectively.
Recommended Detection Systems	Boster recommends Enhanced Chemiluminescent Kit with anti-Rabbit IgG (EK1002) for Western blot, and HRP Conjugated anti-Rabbit IgG Super Vision Assay Kit (SV0002-1) for IHC(P) and IHC(F).
Cross Reactivity	No cross-reactivity with other proteins
Isotype	Rabbit IgG
Form	Lyophilized

Concentration	Adding 0.2 ml of distilled water will yield a concentration of 500 ug/ml.
Purification	Immunogen affinity purified.
Suggested Dilutions	Immunohistochemistry (Paraffin-embedded Section), 0.5-1ug/ml Immunohistochemistry (Frozen Section), 0.5-1ug/ml ELISA, 0.1-0.5ug/ml Western blot, 0.1-0.5ug/ml

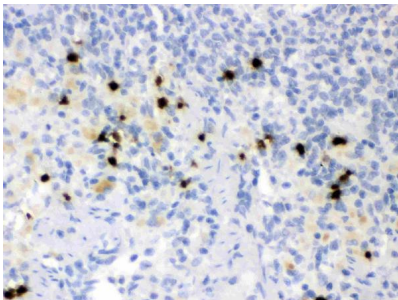
## Anti-Lipocalin 2/LCN2 Antibody Picoband® (PB9608) Images



Western blot analysis of Lipocalin-2/NGAL/LCN2 using anti-Lipocalin-2/NGAL/LCN2 antibody (PB9608). Electrophoresis was performed on a 5-20% SDS-PAGE gel at 70V (Stacking gel) / 90V (Resolving gel) for 2-3 hours. The sample well of each lane was loaded with 30 ug of sample under reducing conditions. Lane 1: mouse spleen tissue lysates. After electrophoresis, proteins were transferred to a nitrocellulose membrane at 150 mA for 50-90 minutes. Blocked the membrane with 5% non-fat milk/TBS for 1.5 hour at RT. The membrane was incubated with rabbit anti-Lipocalin-2/NGAL/LCN2 antigen affinity purified polyclonal antibody (PB9608) at 0.5 ug/mL overnight at 4°C, then washed with TBS-0.1%Tween 3 times with 5 minutes each and probed with a goat anti-rabbit IgG-HRP secondary antibody at a dilution of 1:5000 for 1.5 hour at RT. The signal is developed using an Enhanced Chemiluminescent detection (ECL) kit (Catalog # EK1002) with Tanon 5200 system. A specific band was detected for Lipocalin-2/NGAL/LCN2 at approximately 22 kDa. The expected band size for Lipocalin-2/NGAL/LCN2 is at 22 kDa.

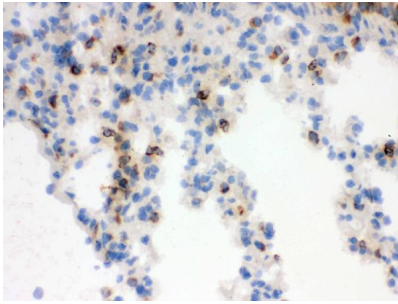


IHC analysis of Lipocalin 2 using anti-Lipocalin 2 antibody (PB9608). Lipocalin 2 was detected in paraffin-embedded section of Mouse Spleen Tissue. Heat mediated antigen retrieval was performed in citrate buffer (pH6, epitope retrieval solution) for 20 mins. The tissue section was blocked with 10% goat serum. The tissue section was then incubated with 1ug/ml rabbit anti-Lipocalin 2 Antibody (PB9608) overnight at 4°C. Biotinylated goat anti-rabbit IgG was used as secondary antibody and incubated for 30 minutes at 37°C. The tissue section was developed using Streptavidin-Biotin-Complex (SABC)(Catalog # SA1022) with DAB as the chromogen.

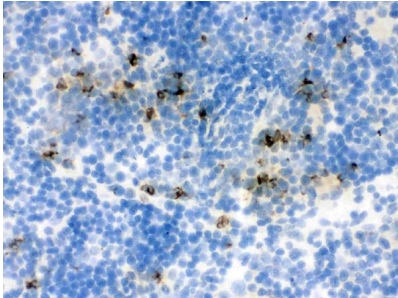


IHC analysis of Lipocalin 2 using anti-Lipocalin 2 antibody (PB9608). Lipocalin 2 was detected in paraffin-embedded section of Rat Spleen Tissue. Heat mediated antigen retrieval was performed in citrate buffer (pH6, epitope retrieval solution) for 20 mins. The tissue section was blocked with 10% goat serum. The tissue section was then incubated with 1ug/ml rabbit anti-Lipocalin 2 Antibody (PB9608) overnight at 4°C. Biotinylated goat anti-rabbit IgG was used as secondary antibody and incubated for 30 minutes at 37°C. The tissue section was developed using Streptavidin-Biotin-Complex (SABC)(Catalog # SA1022) with DAB as the chromogen.

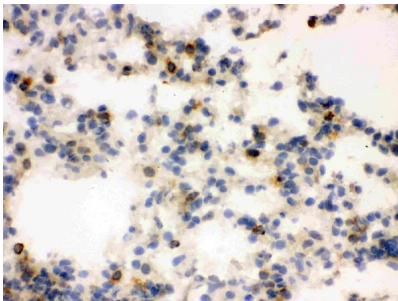
IHC analysis of Lipocalin 2 using anti-Lipocalin 2 antibody (PB9608). Lipocalin 2 was detected in frozen section of mouse lung tissue. The tissue section was blocked with 10% goat serum. The tissue section was then incubated with 1ug/ml rabbit anti-Lipocalin 2 Antibody (PB9608) overnight



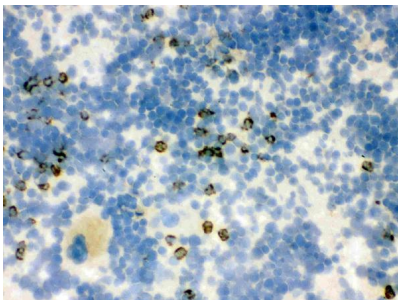
at 4°C. Biotinylated goat anti-rabbit IgG was used as secondary antibody and incubated for 30 minutes at 37°C. The tissue section was developed using Streptavidin-Biotin-Complex (SABC)(Catalog # SA1022) with DAB as the chromogen.



IHC analysis of Lipocalin 2 using anti-Lipocalin 2 antibody (PB9608). Lipocalin 2 was detected in frozen section of mouse spleen tissue. The tissue section was blocked with 10% goat serum. The tissue section was then incubated with 1ug/ml rabbit anti-Lipocalin 2 Antibody (PB9608) overnight at 4°C. Biotinylated goat anti-rabbit IgG was used as secondary antibody and incubated for 30 minutes at 37°C. The tissue section was developed using Streptavidin-Biotin-Complex (SABC)(Catalog # SA1022) with DAB as the chromogen.



IHC analysis of Lipocalin 2 using anti-Lipocalin 2 antibody (PB9608). Lipocalin 2 was detected in frozen section of rat lung tissue. The tissue section was blocked with 10% goat serum. The tissue section was then incubated with 1ug/ml rabbit anti-Lipocalin 2 Antibody (PB9608) overnight at 4°C. Biotinylated goat anti-rabbit IgG was used as secondary antibody and incubated for 30 minutes at 37°C. The tissue section was developed using Streptavidin-Biotin-Complex (SABC)(Catalog # SA1022) with DAB as the chromogen.



IHC analysis of Lipocalin 2 using anti-Lipocalin 2 antibody (PB9608). Lipocalin 2 was detected in frozen section of rat spleen tissue. The tissue section was blocked with 10% goat serum. The tissue section was then incubated with 1ug/ml rabbit anti-Lipocalin 2 Antibody (PB9608) overnight at 4°C. Biotinylated goat anti-rabbit IgG was used as secondary antibody and incubated for 30 minutes at 37°C. The tissue section was developed using Streptavidin-Biotin-Complex (SABC)(Catalog # SA1022) with DAB as the chromogen.

### 3 Publications Citing This Product

1. PubMed ID: 23476127, Koca U, Olguner ??g, Erg??r Bu, Altekin E, Ta??d????en A, Duru S, Girgin P, G??nd??z K, Cilaker M??c??l?? S, G??zelda?? S, Akku?? M. Scientificworldjournal. 2013;2013:292687. Doi: 10.1155/2013/292687. Epub 2013 Feb 13. The Effects Of Dexmedetomidin...
2. PubMed ID: 27252491, Late intervention with the small molecule BB3 mitigates postischemic kidney injury
3. PubMed ID: 27882134, Expression of neutrophil gelatinase-associated lipocalin in low osmolar contrast-induced nephropathy in rats and the effect of N-acetylcysteine

Visit [bosterbio.com/anti-lipocalin-2-ngal-picoband-trade-antibody-pb9608-boster.html](http://bosterbio.com/anti-lipocalin-2-ngal-picoband-trade-antibody-pb9608-boster.html) to see all 3 publications.

## Submit a product review to Biocompare.com

Submit a review of this product to Biocompare.com to receive a \$20 Amazon.com giftcard! Your reviews help your fellow scientists make the right decisions. Thank you for your contribution.



### Anti-Lipocalin 2/LCN2 Antibody

For Research Use Only. Not for use in diagnostic procedures.