

Anti-Cofilin/CFL1 Antibody Picoband®

Catalog Number: PB9620

About CFL1

Cofilin, a member of the ADF/cofilin family, is actually a protein with 70% sequence homology to ADF, making it part of the ADF/cofilin family of small ADP-binding proteins. It is a ubiquitous actin-binding factor required for the reorganization of actin filaments. The protein is known to sever actin filaments by creating more positive ends on filament fragments, it can cause depolymerization at the minus end of filaments, thereby preventing their reassembly. As a long-lasting in vivo effect, cofilin recycles older ADP-F-actin, helping cell to maintain ATP-G-actin pool for sustained motility. pH, phosphorylation and phosphoinositides regulate cofilin's binding and associating activity with actin.

Overview

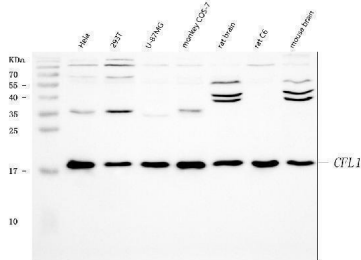
Product Name	Anti-Cofilin/CFL1 Antibody Picoband®
Reactive Species	Human, Monkey, Mouse, Rat
Description	Boster Bio Anti-Cofilin/CFL1 Antibody Picoband® catalog # PB9620. Tested in IF, IHC, ICC, WB applications. This antibody reacts with Human, Monkey, Mouse, Rat. The brand Picoband indicates this is a premium antibody that guarantees superior quality, high affinity, and strong signals with minimal background in Western blot applications. Only our best-performing antibodies are designated as Picoband, ensuring unmatched performance.
Application	IF, IHC, ICC, WB
Clonality	Polyclonal
Formulation	Each vial contains antibody formulated with stabilizing components, 0.9 mg NaCl, 0.2 mg Na ₂ HPO ₄ , and 0.05 mg NaN ₃ . *This antibody is supplied in a stabilized formulation. Compatibility with conjugation reactions depends on the chemistry of the conjugation method used. For conjugation methods that are not compatible with the stabilizing components present in this formulation, a carrier-free antibody format is required.
Storage Instructions	Store at -20°C for one year from date of receipt. After reconstitution, at 4°C for one month. It can also be aliquotted and stored frozen at -20°C for six months. Avoid repeated freeze-thaw cycles.
Host	Rabbit
Uniprot ID	P23528

Technical Details

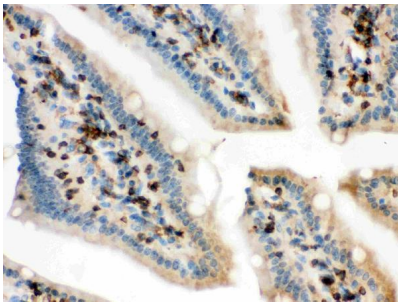
Immunogen	A synthetic peptide corresponding to a sequence at the C-terminus of human Cofilin, identical to the related mouse and rat sequences.
Recommended Detection Systems	Boster recommends Enhanced Chemiluminescent Kit with anti-Rabbit IgG (EK1002) for Western blot, and HRP Conjugated anti-Rabbit IgG Super Vision Assay Kit (SV0002-1) for IHC(P) and ICC.

Cross Reactivity	No cross-reactivity with other proteins
Isotype	Rabbit IgG
Form	Lyophilized
Concentration	Adding 0.2 ml of distilled water will yield a concentration of 500 ug/ml.
Purification	Immunogen affinity purified.
Suggested Dilutions	Western blot, 0.1-0.5ug/ml, Human, Monkey, Mouse, Rat Immunohistochemistry (Paraffin-embedded Section), 0.5-1ug/ml, Human, Mouse, Rat Immunocytochemistry/Immunofluorescence, 5 ug/ml, Human

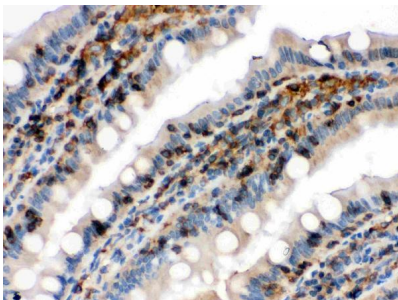
Anti-Cofilin/CFL1 Antibody Picoband® (PB9620) Images



Western blot analysis of Cofilin using anti-Cofilin antibody (PB9620). Electrophoresis was performed on a 5-20% SDS-PAGE gel at 70V (Stacking gel) / 90V (Resolving gel) for 2-3 hours. The sample well of each lane was loaded with 30 ug of sample under reducing conditions. Lane 1: human Hela whole cell lysates, Lane 2: human 293T whole cell lysates, Lane 3: human U-87 MG whole cell lysates, Lane 4: monkey COS-7 whole cell lysates, Lane 5: rat brain tissue lysates, Lane 6: rat C6 whole cell lysates, Lane 7: mouse brain tissue lysates. After electrophoresis, proteins were transferred to a nitrocellulose membrane at 150 mA for 50-90 minutes. Blocked the membrane with 5% non-fat milk/TBS for 1.5 hour at RT. The membrane was incubated with rabbit anti-Cofilin antigen affinity purified polyclonal antibody (Catalog # PB9620) at 0.5 ug/mL overnight at 4°C, then washed with TBS-0.1%Tween 3 times with 5 minutes each and probed with a goat anti-rabbit IgG-HRP secondary antibody at a dilution of 1:5000 for 1.5 hour at RT. The signal is developed using an Enhanced Chemiluminescent detection (ECL) kit (Catalog # EK1002) with Tanon 5200 system. A specific band was detected for Cofilin at approximately 19 kDa. The expected band size for Cofilin is at 19 kDa.

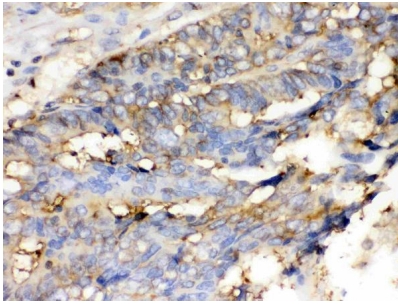


IHC analysis of Cofilin using anti-Cofilin antibody (PB9620). Cofilin was detected in a paraffin-embedded section of mouse intestine tissue. Heat mediated antigen retrieval was performed in EDTA buffer (pH 8.0, epitope retrieval solution). The tissue section was blocked with 10% goat serum. The tissue section was then incubated with 1 ug/ml rabbit anti-Cofilin Antibody (PB9620) overnight at 4°C. Biotinylated goat anti-rabbit IgG was used as secondary antibody and incubated for 30 minutes at 37°C. The tissue section was developed using Streptavidin-Biotin-Complex (SABC) (Catalog # SA1022) with DAB as the chromogen.

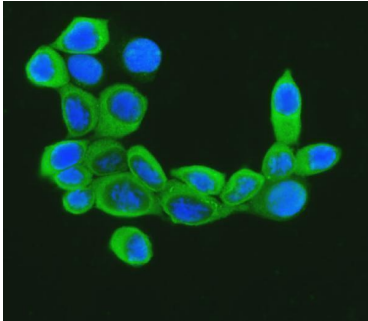


IHC analysis of Cofilin using anti-Cofilin antibody (PB9620). Cofilin was detected in a paraffin-embedded section of rat intestine tissue. Heat mediated antigen retrieval was performed in EDTA buffer (pH 8.0, epitope retrieval solution). The tissue section was blocked with 10% goat serum. The tissue section was then incubated with 1 ug/ml rabbit anti-Cofilin Antibody (PB9620) overnight at 4°C. Biotinylated goat anti-rabbit IgG was used as secondary antibody and incubated for 30 minutes at 37°C. The tissue section was developed using Streptavidin-Biotin-Complex (SABC) (Catalog # SA1022) with DAB as the chromogen.

IHC analysis of Cofilin using anti-Cofilin antibody (PB9620). Cofilin was detected in a paraffin-embedded section of human intestinal cancer tissue. Heat mediated antigen retrieval was performed in EDTA buffer (pH 8.0, epitope retrieval solution). The tissue section was blocked with 10%



goat serum. The tissue section was then incubated with 1 ug/ml rabbit anti-Cofilin Antibody (PB9620) overnight at 4°C. Biotinylated goat anti-rabbit IgG was used as secondary antibody and incubated for 30 minutes at 37°C. The tissue section was developed using Streptavidin-Biotin-Complex (SABC) (Catalog # SA1022) with DAB as the chromogen.



IF analysis of Cofilin using anti-Cofilin antibody (PB9620). Cofilin was detected in an immunocytochemical section of MCF-7 cells. Enzyme antigen retrieval was performed using IHC enzyme antigen retrieval reagent (AR0022) for 15 mins. The cells were blocked with 10% goat serum. And then incubated with 5 ug/mL rabbit anti-Cofilin Antibody (PB9620) overnight at 4°C. DyLight®488 Conjugated Goat Anti-Rabbit IgG (BA1127) was used as secondary antibody at 1:100 dilution and incubated for 30 minutes at 37°C. The section was counterstained with DAPI. Visualize using a fluorescence microscope and filter sets appropriate for the label used.

1 Publications Citing This Product

1. PubMed ID: 30738249, Zhang J,Zhuang R,Zhang X,Hu W,Cheng K,Jiang D,Shen S,Zhang Y,Ding Y,Zhang Y.CD226 is involved in megakaryocyte activation and early-stage differentiation.Mol Immunol.2019 Mar;107:123-131.doi:10.1016/j.molimm.2019.01.013.Epub 2019 Feb 6.PMID:30738249.

Visit bosterbio.com/anti-cofilin-picoband-trade-antibody-pb9620-boster.html to see all 1 publications.

Submit a product review to Biocompare.com

Submit a review of this product to Biocompare.com to receive a \$20 Amazon.com giftcard! Your reviews help your fellow scientists make the right decisions. Thank you for your contribution.



Anti-Cofilin/CFL1 Antibody

For Research Use Only. Not for use in diagnostic procedures.