

Anti-IRF2 Antibody Picoband®

Catalog Number: PB9645

About IRF2

IRF2 (interferon regulatory factor 2) is a member of the interferon regulatory transcription factor (IRF) family. The IRF2 gene is mapped on 4q35.1. When the IRF2 gene was overexpressed in NIH 3T3 cells, the cells became transformed and displayed enhanced tumorigenicity in nude mice. One IRF binding site was found within the IRF2 promoter, and expression of the IRF2 gene was affected by both transient and stable IRF1 expression. IRF2 competitively inhibits the IRF1-mediated transcriptional activation of interferons alpha and beta, and presumably other genes that employ IRF1 for transcription activation. However, IRF2 also functions as a transcriptional activator of histone H4. Irf2 was required to prevent NK-cell apoptosis and keep immature NK cells alive, thus promoting NK-cell maturation and their supply to peripheral blood.

Overview

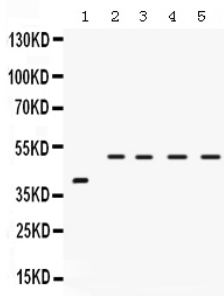
Product Name	Anti-IRF2 Antibody Picoband®
Reactive Species	Human, Rat
Description	Boster Bio Anti-IRF2 Antibody Picoband® catalog # PB9645. Tested in WB applications. This antibody reacts with Human, Rat. The brand Picoband indicates this is a premium antibody that guarantees superior quality, high affinity, and strong signals with minimal background in Western blot applications. Only our best-performing antibodies are designated as Picoband, ensuring unmatched performance.
Application	WB
Clonality	Polyclonal
Formulation	Each vial contains antibody formulated with stabilizing components, 0.9 mg NaCl, 0.2 mg Na ₂ HPO ₄ , and 0.05 mg NaN ₃ . *This antibody is supplied in a stabilized formulation. Compatibility with conjugation reactions depends on the chemistry of the conjugation method used. For conjugation methods that are not compatible with the stabilizing components present in this formulation, a carrier-free antibody format is required.
Storage Instructions	Store at -20°C for one year from date of receipt. After reconstitution, at 4°C for one month. It can also be aliquotted and stored frozen at -20°C for six months. Avoid repeated freeze-thaw cycles.
Host	Rabbit
Uniprot ID	P14316

Technical Details

Immunogen	A synthetic peptide corresponding to a sequence at the C-terminus of human IRF2, different from the related mouse sequence by three amino acids.
Recommended Detection Systems	Boster recommends Enhanced Chemiluminescent Kit with anti-Rabbit IgG (EK1002) for Western

	blot.
Cross Reactivity	No cross-reactivity with other proteins
Isotype	Rabbit IgG
Form	Lyophilized
Concentration	Adding 0.2 ml of distilled water will yield a concentration of 500 ug/ml.
Purification	Immunogen affinity purified.
Suggested Dilutions	Western blot, 0.1-0.5ug/ml, Human, Rat

Anti-IRF2 Antibody Picoband® (PB9645) Images



Western blot analysis of IRF2 using anti-IRF2 antibody (PB9645). Electrophoresis was performed on a 5-20% SDS-PAGE gel at 70V (Stacking gel) / 90V (Resolving gel) for 2-3 hours. Lane 1: Rat Intestine Tissue Lysate at 50ug, Lane 2: SW620 Whole Cell Lysate at 40ug, Lane 3: COLO320 Whole Cell Lysate at 40ug, Lane 4: HELA Whole Cell Lysate at 40ug, Lane 5: A549 Whole Cell Lysate at 40ug. After electrophoresis, proteins were transferred to a nitrocellulose membrane at 150 mA for 50-90 minutes. Blocked the membrane with 5% non-fat milk/TBS for 1.5 hour at RT. The membrane was incubated with rabbit anti-IRF2 antigen affinity purified polyclonal antibody (Catalog # PB9645) at 0.5 ug/mL overnight at 4°C, then washed with TBS-0.1%Tween 3 times with 5 minutes each and probed with a goat anti-rabbit IgG-HRP secondary antibody at a dilution of 1:5000 for 1.5 hour at RT. The signal is developed using an Enhanced Chemiluminescent detection (ECL) kit (Catalog # EK1002) with Tanon 5200 system. A specific band was detected for IRF2 at approximately 50 kDa. The expected band size for IRF2 is at 39 kDa.

Submit a product review to Biocompare.com

Submit a review of this product to Biocompare.com to receive a \$20 Amazon.com giftcard! Your reviews help your fellow scientists make the right decisions. Thank you for your contribution.



Anti-IRF2 Antibody

For Research Use Only. Not for use in diagnostic procedures.