

Anti-Kininogen 1/KNG1 Antibody Picoband®

Catalog Number: PB9655

About Kng1

Kininogen-1 (KNG1), also known as BDK or bradykinin, is a protein that in humans is encoded by the KNG1 gene. It is mapped to 3q27.3. The KNG1 gene uses alternative splicing to generate two different proteins – high – molecular - weight kininogen (HMWK) and low - molecular- weight kininogen (LMWK). HMWK is essential for blood coagulation and assembly of the kallikrein-kinin system. Also, KNG1, a peptide causing numerous physiological effects, is released from HMWK. In contrast to HMWK, LMWK is not involved in blood coagulation. In addition to that, KNG1 is a constituent of the blood coagulation system as well as the kinin-kallikrein system.

Overview

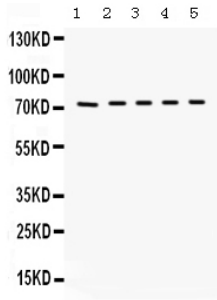
Product Name	Anti-Kininogen 1/KNG1 Antibody Picoband®
Reactive Species	Mouse
Description	Boster Bio Anti-Kininogen 1/KNG1 Antibody Picoband® catalog # PB9655. Tested in IHC, WB applications. This antibody reacts with Mouse. The brand Picoband indicates this is a premium antibody that guarantees superior quality, high affinity, and strong signals with minimal background in Western blot applications. Only our best-performing antibodies are designated as Picoband, ensuring unmatched performance.
Application	IHC, WB
Clonality	Polyclonal
Formulation	Each vial contains antibody formulated with stabilizing components, 0.9 mg NaCl, 0.2 mg Na ₂ HPO ₄ , and 0.05 mg NaN ₃ . *This antibody is supplied in a stabilized formulation. Compatibility with conjugation reactions depends on the chemistry of the conjugation method used. For conjugation methods that are not compatible with the stabilizing components present in this formulation, a carrier-free antibody format is required.
Storage Instructions	Store at -20°C for one year from date of receipt. After reconstitution, at 4°C for one month. It can also be aliquotted and stored frozen at -20°C for six months. Avoid repeated freeze-thaw cycles.
Host	Rabbit
Uniprot ID	O08677

Technical Details

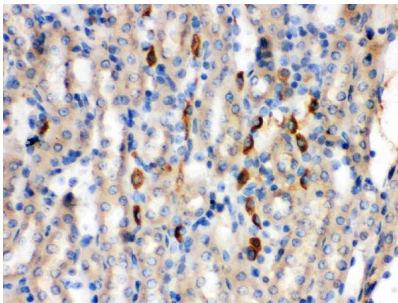
Immunogen	A synthetic peptide corresponding to a sequence in the middle region of mouse Kininogen 1, different from the related rat sequence by thirteen amino acids.
Recommended Detection Systems	Boster recommends Enhanced Chemiluminescent Kit with anti-Rabbit IgG (EK1002) for Western blot, and HRP Conjugated anti-Rabbit IgG Super Vision Assay Kit (SV0002-1) for IHC(P).

Cross Reactivity	No cross-reactivity with other proteins
Isotype	Rabbit IgG
Form	Lyophilized
Concentration	Adding 0.2 ml of distilled water will yield a concentration of 500 ug/ml.
Purification	Immunogen affinity purified.
Suggested Dilutions	Immunohistochemistry (Paraffin-embedded Section), 0.5-1ug/ml, Mouse Western blot, 0.1-0.5ug/ml, Mouse

Anti-Kininogen 1/KNG1 Antibody Picoband® (PB9655) Images



Western blot analysis of Kininogen 1 using anti-Kininogen 1 antibody (PB9655). Electrophoresis was performed on a 5-20% SDS-PAGE gel at 70V (Stacking gel) / 90V (Resolving gel) for 2-3 hours. Lane 1: Mouse Lung Tissue Lysate at 50ug, Lane 2: Mouse Testis Tissue Lysate at 50ug, Lane 3: Mouse Liver Tissue Lysate at 50ug, Lane 4: HEPA Whole Cell Lysate at 40ug, Lane 5: NEURO Whole Cell Lysate at 40ug. After electrophoresis, proteins were transferred to a nitrocellulose membrane at 150 mA for 50-90 minutes. Blocked the membrane with 5% non-fat milk/TBS for 1.5 hour at RT. The membrane was incubated with rabbit anti-Kininogen 1 antigen affinity purified polyclonal antibody (Catalog # PB9655) at 0.5 ug/mL overnight at 4°C, then washed with TBS-0.1%Tween 3 times with 5 minutes each and probed with a goat anti-rabbit IgG-HRP secondary antibody at a dilution of 1:5000 for 1.5 hour at RT. The signal is developed using an Enhanced Chemiluminescent detection (ECL) kit (Catalog # EK1002) with Tanon 5200 system. A specific band was detected for Kininogen 1 at approximately 73 kDa. The expected band size for Kininogen 1 is at 73 kDa.



IHC analysis of Kininogen 1 using anti-Kininogen 1 antibody (PB9655). Kininogen 1 was detected in a paraffin-embedded section of mouse kidney tissue. Heat mediated antigen retrieval was performed in EDTA buffer (pH 8.0, epitope retrieval solution). The tissue section was blocked with 10% goat serum. The tissue section was then incubated with 1 ug/ml rabbit anti-Kininogen 1 Antibody (PB9655) overnight at 4°C. Biotinylated goat anti-rabbit IgG was used as secondary antibody and incubated for 30 minutes at 37°C. The tissue section was developed using Streptavidin-Biotin-Complex (SABC) (Catalog # SA1022) with DAB as the chromogen.

Submit a product review to [Biocompare.com](https://www.biocompare.com)

Submit a review of this product to [Biocompare.com](https://www.biocompare.com) to receive a \$20 Amazon.com giftcard! Your reviews help your fellow scientists make the right decisions. Thank you for your contribution.



Anti-Kininogen 1/KNG1 Antibody

For Research Use Only. Not for use in diagnostic procedures.