

Anti-Lymphotactin/XCL1 Antibody Picoband®

Catalog Number: PB9681

About XCL1

Chemokine (C motif) ligand (XCL1) is a small cytokine belonging to the XC chemokine family that is also known as lymphotactin. Muller et al. (1995) mapped the gene to chromosome 1q23 by FISH. The sequence of the deduced 114-amino acid protein is most homologous to the CC chemokines CCL8 and CCL3. It is found in high levels in spleen, thymus, intestine and peripheral blood leukocytes, and at lower levels in lung, prostate gland and ovary. XCL1 induces the migration of cells expressing XCR1.

Overview

Product Name	Anti-Lymphotactin/XCL1 Antibody Picoband®
Reactive Species	Human
Description	Boster Bio Anti-Lymphotactin/XCL1 Antibody Picoband® catalog # PB9681. Tested in ELISA, WB applications. This antibody reacts with Human. The brand Picoband indicates this is a premium antibody that guarantees superior quality, high affinity, and strong signals with minimal background in Western blot applications. Only our best-performing antibodies are designated as Picoband, ensuring unmatched performance.
Application	WB, ELISA (Cap)
Clonality	Polyclonal
Formulation	Each vial contains antibody formulated with stabilizing components, 0.9 mg NaCl, 0.2 mg Na ₂ HPO ₄ , and 0.05 mg NaN ₃ . *This antibody is supplied in a stabilized formulation. Compatibility with conjugation reactions depends on the chemistry of the conjugation method used. For conjugation methods that are not compatible with the stabilizing components present in this formulation, a carrier-free antibody format is required.
Storage Instructions	Store at -20°C for one year from date of receipt. After reconstitution, at 4°C for one month. It can also be aliquotted and stored frozen at -20°C for six months. Avoid repeated freeze-thaw cycles.
Host	Rabbit
Uniprot ID	P47992

Technical Details

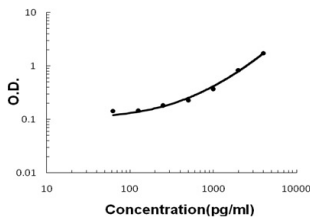
Immunogen	E.coli-derived human Lymphotactin recombinant protein (Position: V22-G114). Human Lymphotactin shares 60.2% and 57% amino acid (aa) sequence identity with mouse and rat Lymphotactin, respectively.
Recommended Detection Systems	Boster recommends Enhanced Chemiluminescent Kit with anti-Rabbit IgG (EK1002) for Western blot.

Cross Reactivity	No cross-reactivity with other proteins
Isotype	Rabbit IgG
Form	Lyophilized
Concentration	Adding 0.2 ml of distilled water will yield a concentration of 500 ug/ml.
Purification	Immunogen affinity purified.
Suggested Dilutions	Western blot, 0.1-0.5ug/ml, Human ELISA (Cap), 1-5ug/ml

Anti-Lymphotactin/XCL1 Antibody Picoband® (PB9681) Images



Western blot analysis of Lymphotactin using anti-Lymphotactin antibody (PB9681). Electrophoresis was performed on a 5-20% SDS-PAGE gel at 70V (Stacking gel) / 90V (Resolving gel) for 2-3 hours. Lane 1: HELA Whole Cell Lysate at 40ug. After electrophoresis, proteins were transferred to a nitrocellulose membrane at 150 mA for 50-90 minutes. Blocked the membrane with 5% non-fat milk/TBS for 1.5 hour at RT. The membrane was incubated with rabbit anti-Lymphotactin antigen affinity purified polyclonal antibody (Catalog # PB9681) at 0.5 ug/mL overnight at 4°C, then washed with TBS-0.1%Tween 3 times with 5 minutes each and probed with a goat anti-rabbit IgG-HRP secondary antibody at a dilution of 1:5000 for 1.5 hour at RT. The signal is developed using an Enhanced Chemiluminescent detection (ECL) kit (Catalog # EK1002) with Tanon 5200 system. A specific band was detected for Lymphotactin at approximately 13 kDa. The expected band size for Lymphotactin is at 13 kDa.



Sandwich ELISA - Recombinant human Lymphotactin/XCL1 protein standard curve. Use in combination with reagents from Human Lymphotactin/XCL1 ELISA Kit EZ-Set (DIY Antibody Pairs) (EZ0802).

Submit a product review to Biocompare.com

Submit a review of this product to Biocompare.com to receive a \$20 Amazon.com giftcard! Your reviews help your fellow scientists make the right decisions. Thank you for your contribution.



Anti-Lymphotactin/XCL1 Antibody

For Research Use Only. Not for use in diagnostic procedures.