

## Anti-GRK6 Antibody Picoband®

Catalog Number: PB9709

### About GRK6

G protein-coupled receptor kinase 6 is an enzyme that in humans is encoded by the GRK6 gene. It is mapped to 5q35. This gene encodes a member of the guanine nucleotide-binding protein (G protein)-coupled receptor kinase subfamily of the Ser/Thr protein kinase family. The protein phosphorylates the activated forms of G protein-coupled receptors thus initiating their deactivation. Several transcript variants encoding different isoforms have been described for this gene. Also, GRK6 appears to be involved in responses to morphine.

### Overview

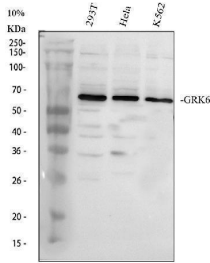
|                      |   |
|----------------------|---|
| Product Name         | Anti-GRK6 Antibody Picoband®  |
| Reactive Species     | Human   |
| Description          | Boster Bio Anti-GRK6 Antibody Picoband® catalog # PB9709. Tested in WB applications. This antibody reacts with Human. The brand Picoband indicates this is a premium antibody that guarantees superior quality, high affinity, and strong signals with minimal background in Western blot applications. Only our best-performing antibodies are designated as Picoband, ensuring unmatched performance. |
| Application          | WB  |
| Clonality            | Polyclonal  |
| Formulation          | Each vial contains 4 mg Trehalose, 0.9 mg NaCl and 0.2 mg Na <sub>2</sub> HPO <sub>4</sub> .  |
| Storage Instructions | Store at -20°C for one year from date of receipt. After reconstitution, at 4°C for one month. It can also be aliquotted and stored frozen at -20°C for six months. Avoid repeated freeze-thaw cycles.   |
| Host                 | Rabbit  |
| Uniprot ID           | P43250  |

### Technical Details

|                               |   |
|-------------------------------|---|
| Immunogen                     | A synthetic peptide corresponding to a sequence at the C-terminus of human GRK6, different from the related mouse sequence by four amino acids, and from the related rat sequence by three amino acids. |
| Recommended Detection Systems | Boster recommends Enhanced Chemiluminescent Kit with anti-Rabbit IgG (EK1002) for Western blot.   |
| Cross Reactivity              | No cross-reactivity with other proteins   |
| Isotype                       | Rabbit IgG  |
| Form                          | Lyophilized   |

|                     |   |
|---------------------|---|
| Concentration       | Adding 0.2 ml of distilled water will yield a concentration of 500 ug/ml. |
| Purification        | Immunogen affinity purified.  |
| Suggested Dilutions | Western blot, 0.1-0.5ug/ml, Human   |

## Anti-GRK6 Antibody Picoband® (PB9709) Images



Western blot analysis of GRK6 using anti-GRK6 antibody (PB9709). Electrophoresis was performed on a 10% SDS-PAGE gel at 80V (Stacking gel) / 120V (Resolving gel) for 2 hours. The sample well of each lane was loaded with 30 ug of sample under reducing conditions. Lane 1: human 293T whole cell lysates, Lane 2: human Hela whole cell lysates, Lane 3: human K562 whole cell lysates. After electrophoresis, proteins were transferred to a nitrocellulose membrane at 150 mA for 50-90 minutes. Blocked the membrane with 5% non-fat milk/TBS for 1.5 hour at RT. The membrane was incubated with rabbit anti-GRK6 antigen affinity purified polyclonal antibody (Catalog # PB9709) at 0.5 ug/mL overnight at 4°C, then washed with TBS-0.1%Tween 3 times with 5 minutes each and probed with a goat anti-rabbit IgG-HRP secondary antibody at a dilution of 1:5000 for 1.5 hour at RT. The signal is developed using an ECL Plus Western Blotting Substrate (Catalog # AR1196-200) with Tanon 5200 system. A specific band was detected for GRK6 at approximately 66 kDa. The expected band size for GRK6 is at 66 kDa.

### Submit a product review to Biocompare.com

Submit a review of this product to Biocompare.com to receive a \$20 Amazon.com giftcard! Your reviews help your fellow scientists make the right decisions. Thank you for your contribution.



### Anti-GRK6 Antibody

For Research Use Only. Not for use in diagnostic procedures.