

Anti-MLH1 Antibody Picoband®

Catalog Number: PB9724

About MLH1

MutL homolog 1, colon cancer, nonpolyposis type 2 (E. coli) is a protein that in humans is encoded by the MLH1 gene located on Chromosome 3. This gene was identified as a locus frequently mutated in hereditary nonpolyposis colon cancer (HNPCC). It is a human homolog of the E. coli DNA mismatch repair gene mutL, consistent with the characteristic alterations in microsatellite sequences (RER+phenotype) found in HNPCC. Alternative splicing results in multiple transcript variants encoding distinct isoforms. Additional transcript variants have been described, but their full-length natures have not been determined.

Overview

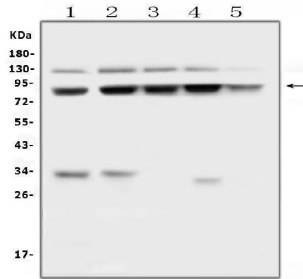
| | |
|----------------------|--|
| Product Name | Anti-MLH1 Antibody Picoband® |
| Reactive Species | Human |
| Description | Boster Bio Anti-MLH1 Antibody Picoband® catalog # PB9724. Tested in WB applications. This antibody reacts with Human. The brand Picoband indicates this is a premium antibody that guarantees superior quality, high affinity, and strong signals with minimal background in Western blot applications. Only our best-performing antibodies are designated as Picoband, ensuring unmatched performance. |
| Application | WB |
| Clonality | Polyclonal |
| Formulation | Each vial contains antibody formulated with stabilizing components, 0.9 mg NaCl, 0.2 mg Na ₂ HPO ₄ , and 0.05 mg Na ₃ N. *This antibody is supplied in a stabilized formulation. Compatibility with conjugation reactions depends on the chemistry of the conjugation method used. For conjugation methods that are not compatible with the stabilizing components present in this formulation, a carrier-free antibody format is required. |
| Storage Instructions | Store at -20°C for one year from date of receipt. After reconstitution, at 4°C for one month. It can also be aliquotted and stored frozen at -20°C for six months. Avoid repeated freeze-thaw cycles. |
| Host | Rabbit |
| Uniprot ID | P40692 |

Technical Details

| | |
|-------------------------------|---|
| Immunogen | A synthetic peptide corresponding to a sequence at the C-terminus of human MLH1, different from the related mouse sequence by three amino acids, and from the related rat sequence by four amino acids. |
| Recommended Detection Systems | Boster recommends Enhanced Chemiluminescent Kit with anti-Rabbit IgG (EK1002) for Western blot. |

| | |
|---------------------|---|
| Cross Reactivity | No cross-reactivity with other proteins. |
| Isotype | Rabbit IgG |
| Form | Lyophilized |
| Concentration | Adding 0.2 ml of distilled water will yield a concentration of 500 ug/ml. |
| Purification | Immunogen affinity purified. |
| Suggested Dilutions | Western blot, 0.1-0.5ug/ml, Human |

Anti-MLH1 Antibody Picoband® (PB9724) Images



Western blot analysis of MLH1 using anti-MLH1 antibody (PB9724). Electrophoresis was performed on a 5-20% SDS-PAGE gel at 70V (Stacking gel) / 90V (Resolving gel) for 2-3 hours. The sample well of each lane was loaded with 50ug of sample under reducing conditions. Lane 1: human HEK293 whole cell lysates, Lane 2: human Hela whole cell lysates, Lane 3: human COLO-320 whole cell lysates, Lane 4: human T-47D whole cell lysates, Lane 5: human A549 whole cell lysates. After Electrophoresis, proteins were transferred to a Nitrocellulose membrane at 150mA for 50-90 minutes. Blocked the membrane with 5% Non-fat Milk/ TBS for 1.5 hour at RT. The membrane was incubated with rabbit anti-MLH1 antigen affinity purified polyclonal antibody (Catalog # PB9724) at 0.5 ug/mL overnight at 4°C, then washed with TBS-0.1%Tween 3 times with 5 minutes each and probed with a goat anti-rabbit IgG-HRP secondary antibody at a dilution of 1:10000 for 1.5 hour at RT. The signal is developed using an Enhanced Chemiluminescent detection (ECL) kit (Catalog # EK1002) with Tanon 5200 system. A specific band was detected for MLH1 at approximately 85KD. The expected band size for MLH1 is at 85KD.

Submit a product review to Biocompare.com

Submit a review of this product to Biocompare.com to receive a \$20 Amazon.com giftcard! Your reviews help your fellow scientists make the right decisions. Thank you for your contribution.



Anti-MLH1 Antibody

For Research Use Only. Not for use in diagnostic procedures.