

Anti-c-Rel Antibody Picoband®

Catalog Number: PB9741

About Rel

The proto-oncogene c-Rel is a protein that in humans is encoded by the REL gene. This gene is mapped to chromosome 2p13-p12. The c-Rel protein is a member of the NF-kappaB family of transcription factors and contains a Rel homology domain (RHD) at its N-terminus and two C-terminal transactivation domains. c-Rel has an important role in B-cell survival and proliferation. The REL gene is amplified or mutated in several human B-cell lymphomas, including diffuse large B-cell lymphoma and Hodgkin's lymphoma.

Overview

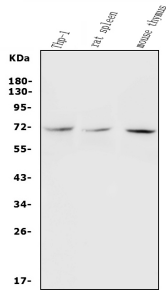
Product Name	Anti-c-Rel Antibody Picoband®
Reactive Species	Human, Mouse, Rat
Description	Boster Bio Anti-c-Rel Antibody Picoband® catalog # PB9741. Tested in IHC, WB applications. This antibody reacts with Human, Mouse, Rat. The brand Picoband indicates this is a premium antibody that guarantees superior quality, high affinity, and strong signals with minimal background in Western blot applications. Only our best-performing antibodies are designated as Picoband, ensuring unmatched performance.
Application	IHC, WB
Clonality	Polyclonal
Formulation	Each vial contains antibody formulated with stabilizing components, 0.9 mg NaCl, 0.2 mg Na ₂ HPO ₄ , and 0.05 mg NaN ₃ . *This antibody is supplied in a stabilized formulation. Compatibility with conjugation reactions depends on the chemistry of the conjugation method used. For conjugation methods that are not compatible with the stabilizing components present in this formulation, a carrier-free antibody format is required.
Storage Instructions	Store at -20°C for one year from date of receipt. After reconstitution, at 4°C for one month. It can also be aliquotted and stored frozen at -20°C for six months. Avoid repeated freeze-thaw cycles.
Host	Rabbit
Uniprot ID	P15307

Technical Details

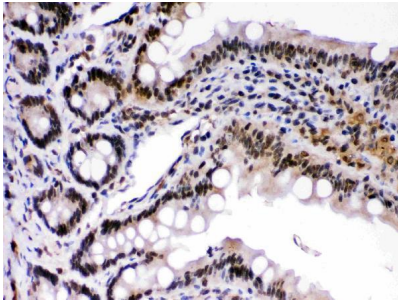
Immunogen	A synthetic peptide corresponding to a sequence in the middle region of mouse c-Rel, different from the related human sequence by four amino acids.
Recommended Detection Systems	Boster recommends Enhanced Chemiluminescent Kit with anti-Rabbit IgG (EK1002) for Western blot, and HRP Conjugated anti-Rabbit IgG Super Vision Assay Kit (SV0002-1) for IHC(P).
Cross Reactivity	No cross-reactivity with other proteins.

Isotype	Rabbit IgG
Form	Lyophilized
Concentration	Adding 0.2 ml of distilled water will yield a concentration of 500 ug/ml.
Purification	Immunogen affinity purified.
Suggested Dilutions	Western blot, 0.1-0.5ug/ml, Human, Mouse, Rat Immunohistochemistry (Paraffin-embedded Section), 0.5-1ug/ml, Human, Mouse, Rat

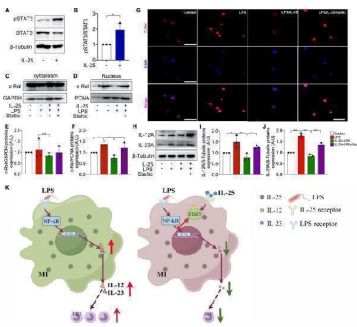
Anti-c-Rel Antibody Picoband® (PB9741) Images



Western blot analysis of c-Rel using anti-c-Rel antibody (PB9741). Electrophoresis was performed on a 5-20% SDS-PAGE gel at 70V (Stacking gel) / 90V (Resolving gel) for 2-3 hours. The sample well of each lane was loaded with 30 ug of sample under reducing conditions. Lane 1: human THP-1 whole cell lysates, Lane 2: rat spleen tissue lysates, Lane 3: mouse thymus tissue lysates. After electrophoresis, proteins were transferred to a nitrocellulose membrane at 150 mA for 50-90 minutes. Blocked the membrane with 5% non-fat milk/TBS for 1.5 hour at RT. The membrane was incubated with rabbit anti-c-Rel antigen affinity purified polyclonal antibody (Catalog # PB9741) at 0.5 ug/mL overnight at 4°C, then washed with TBS-0.1%Tween 3 times with 5 minutes each and probed with a goat anti-rabbit IgG-HRP secondary antibody at a dilution of 1:5000 for 1.5 hour at RT. The signal is developed using an Enhanced Chemiluminescent detection (ECL) kit (Catalog # EK1002) with Tanon 5200 system. A specific band was detected for c-Rel at approximately 69 kDa. The expected band size for c-Rel is at 65 kDa.

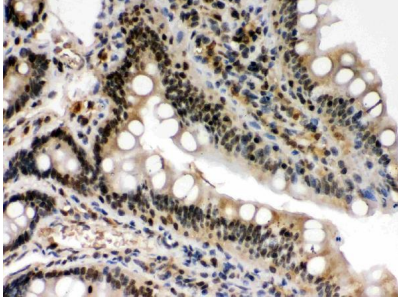


IHC analysis of c-Rel using anti-c-Rel antibody (PB9741). c-Rel was detected in a paraffin-embedded section of mouse Intestine tissue. Heat mediated antigen retrieval was performed in EDTA buffer (pH 8.0, epitope retrieval solution). The tissue section was blocked with 10% goat serum. The tissue section was then incubated with 1 ug/ml rabbit anti-c-Rel Antibody (PB9741) overnight at 4°C. Biotinylated goat anti-rabbit IgG was used as secondary antibody and incubated for 30 minutes at 37°C. The tissue section was developed using Streptavidin-Biotin-Complex (SABC) (Catalog # SA1022) with DAB as the chromogen.

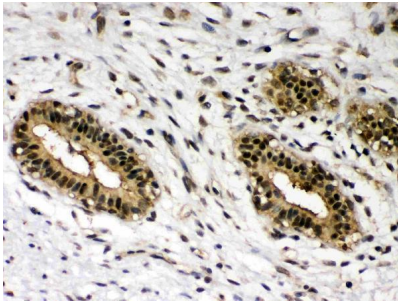


IL-25 inhibited LPS-induced translocation of c-Rel in STAT3-dependent manner in pulmonary macrophages. (A) The level of STAT3 phosphorylation was detected using Western blot. (B) Quantitative analysis of STAT3 phosphorylation in primary culture of pulmonary macrophages using ImageJ. Values are expressed in arbitrary units (a.u.). (C - D) Western blot was performed to measure the protein levels of c-Rel in the cytoplasm (C) and nucleus (D) of pulmonary macrophages. (E - F) Quantitative analysis of c-Rel expression in cytoplasm (E) and nucleus (F) of pulmonary macrophages using ImageJ. (G) Representative images of c-Rel immunofluorescence staining in primary culture of macrophage from lung. Scale bar, 50 um. (H) The protein levels of IL-12 A and IL-23 A of pulmonary macrophages was measured using Western blot. (I - J) Quantitative analysis of IL-12 A and IL-23 A in pulmonary macrophages using ImageJ. Values are expressed in arbitrary units (a.u.). (K) The graphical abstract of this study, which was drawn by Figdraw. The experiment was repeated 3 times independently, and the similar trend was

obtained. One way ANOVA was used for statistical analysis (* P<0.05; ** P<0.01; *** P<0.001) Index in PubMed under a CC BY license. PMID: 37898756



IHC analysis of c-Rel using anti-c-Rel antibody (PB9741). c-Rel was detected in a paraffin-embedded section of rat Intestine tissue. Heat mediated antigen retrieval was performed in EDTA buffer (pH 8.0, epitope retrieval solution). The tissue section was blocked with 10% goat serum. The tissue section was then incubated with 1 ug/ml rabbit anti-c-Rel Antibody (PB9741) overnight at 4°C. Biotinylated goat anti-rabbit IgG was used as secondary antibody and incubated for 30 minutes at 37°C. The tissue section was developed using Streptavidin-Biotin-Complex (SABC) (Catalog # SA1022) with DAB as the chromogen.



IHC analysis of c-Rel using anti-c-Rel antibody (PB9741). c-Rel was detected in a paraffin-embedded section of human mammary cancer tissue. Heat mediated antigen retrieval was performed in EDTA buffer (pH 8.0, epitope retrieval solution). The tissue section was blocked with 10% goat serum. The tissue section was then incubated with 1 ug/ml rabbit anti-c-Rel Antibody (PB9741) overnight at 4°C. Biotinylated goat anti-rabbit IgG was used as secondary antibody and incubated for 30 minutes at 37°C. The tissue section was developed using Streptavidin-Biotin-Complex (SABC) (Catalog # SA1022) with DAB as the chromogen.

Submit a product review to [Biocompare.com](https://www.biocompare.com)

Submit a review of this product to [Biocompare.com](https://www.biocompare.com) to receive a \$20 Amazon.com giftcard! Your reviews help your fellow scientists make the right decisions. Thank you for your contribution.



Anti-c-Rel Antibody

For Research Use Only. Not for use in diagnostic procedures.