

Anti-Syndecan-1/SDC1 Antibody Picoband®

Catalog Number: PB9743

About SDC1

Syndecan 1 is a protein which in humans is encoded by the SDC1 gene. The protein encoded by this gene is a transmembrane (type I) heparan sulfate proteoglycan and is a member of the syndecan proteoglycan family. The syndecans mediate cell binding, cell signaling, and cytoskeletal organization and syndecan receptors are required for internalization of the HIV-1 tat protein. The syndecan-1 protein functions as an integral membrane protein and participates in cell proliferation, cell migration and cell-matrix interactions via its receptor for extracellular matrix proteins. Altered syndecan-1 expression has been detected in several different tumor types. While several transcript variants may exist for this gene, the full-length nature of only two have been described to date. These two represent the major variants of this gene and encode the same protein.

Overview

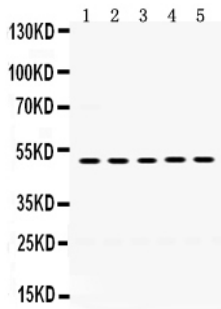
Product Name	Anti-Syndecan-1/SDC1 Antibody Picoband®
Reactive Species	Human
Description	Boster Bio Anti-Syndecan-1/SDC1 Antibody Picoband® catalog # PB9743. Tested in Flow Cytometry, IF, ICC, WB applications. This antibody reacts with Human. The brand Picoband indicates this is a premium antibody that guarantees superior quality, high affinity, and strong signals with minimal background in Western blot applications. Only our best-performing antibodies are designated as Picoband, ensuring unmatched performance.
Application	Flow Cytometry, IF, ICC, WB
Clonality	Polyclonal
Formulation	Each vial contains antibody formulated with stabilizing components, 0.9 mg NaCl, 0.2 mg Na ₂ HPO ₄ , and 0.05 mg NaN ₃ . *This antibody is supplied in a stabilized formulation. Compatibility with conjugation reactions depends on the chemistry of the conjugation method used. For conjugation methods that are not compatible with the stabilizing components present in this formulation, a carrier-free antibody format is required.
Storage Instructions	Store at -20°C for one year from date of receipt. After reconstitution, at 4°C for one month. It can also be aliquotted and stored frozen at -20°C for six months. Avoid repeated freeze-thaw cycles.
Host	Rabbit
Uniprot ID	P18827

Technical Details

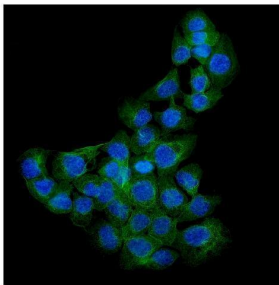
Immunogen	A synthetic peptide corresponding to a sequence at the C-terminus of human Syndecan-1, different from the related mouse sequence by six amino acids, and from the related rat sequence by four amino acids.
-----------	---

Recommended Detection Systems	Boster recommends Enhanced Chemiluminescent Kit with anti-Rabbit IgG (EK1002) for Western blot, and HRP Conjugated anti-Rabbit IgG Super Vision Assay Kit (SV0002-1) for ICC.
Cross Reactivity	No cross-reactivity with other proteins.
Isotype	Rabbit IgG
Form	Lyophilized
Concentration	Adding 0.2 ml of distilled water will yield a concentration of 500 ug/ml.
Purification	Immunogen affinity purified.
Suggested Dilutions	Western blot, 0.1-0.5ug/ml, Human Immunocytochemistry/Immunofluorescence, 2ug/ml, Human Flow Cytometry (Fixed), 1-3ug/1x10 ⁶ cells, Human

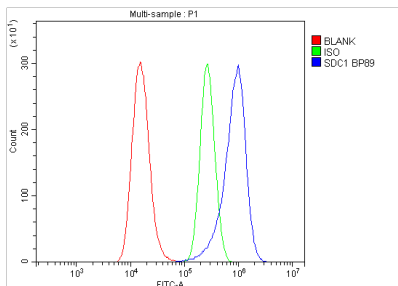
Anti-Syndecan-1/SDC1 Antibody Picoband® (PB9743) Images



Western blot analysis of Syndecan-1 using anti-Syndecan-1 antibody (PB9743). Electrophoresis was performed on a 5-20% SDS-PAGE gel at 70V (Stacking gel) / 90V (Resolving gel) for 2-3 hours. The sample well of each lane was loaded with 40 ug of sample under reducing conditions. Lane 1: HT1080 Whole Cell Lysate, Lane 2: MCF-7 Whole Cell Lysate, Lane 3: 293T Whole Cell Lysate, Lane 4: HEPG2 Whole Cell Lysate, Lane 5: HELA Whole Cell Lysate. After electrophoresis, proteins were transferred to a nitrocellulose membrane at 150 mA for 50-90 minutes. Blocked the membrane with 5% non-fat milk/TBS for 1.5 hour at RT. The membrane was incubated with rabbit anti-Syndecan-1 antigen affinity purified polyclonal antibody (Catalog # PB9743) at 0.5 ug/mL overnight at 4°C, then washed with TBS-0.1%Tween 3 times with 5 minutes each and probed with a goat anti-rabbit IgG-HRP secondary antibody at a dilution of 1:5000 for 1.5 hour at RT. The signal is developed using an Enhanced Chemiluminescent detection (ECL) kit (Catalog # EK1002) with Tanon 5200 system. A specific band was detected for Syndecan-1 at approximately 50 kDa. The expected band size for Syndecan-1 is at 32 kDa.



IF analysis of Syndecan-1 using anti-Syndecan-1 antibody (PB9743). Syndecan-1 was detected in immunocytochemical section of A431 cells. Enzyme antigen retrieval was performed using IHC enzyme antigen retrieval reagent (AR0022) for 15 mins. The cells were blocked with 10% goat serum. And then incubated with 2ug/mL rabbit anti-Syndecan-1 Antibody (PB9743) overnight at 4°C. DyLight®488 Conjugated Goat Anti-Rabbit IgG (BA1127) was used as secondary antibody at 1:100 dilution and incubated for 30 minutes at 37°C. The section was counterstained with DAPI. Visualize using a fluorescence microscope and filter sets appropriate for the label used.



Flow Cytometry analysis of A549 cells using anti-Syndecan-1 antibody (PB9743). Overlay histogram showing A549 cells stained with PB9743 (Blue line). The cells were fixed with 4% paraformaldehyde and blocked with 10% normal goat serum. And then incubated with rabbit anti-Syndecan-1 Antibody (PB9743, 1ug/1x10⁶ cells) for 30 min at 20°C. DyLight®488 conjugated goat anti-rabbit IgG (BA1127, 5-10ug/1x10⁶ cells) was used as secondary antibody for 30 minutes at 20°C. Isotype control antibody (Green line) was rabbit IgG (1ug/1x10⁶) used under the same conditions. Unlabelled sample without incubation with primary antibody and secondary antibody (Red line) was used as a blank control.

2 Publications Citing This Product

Wang X, Liu J, Ma B, Fu Q, Wu K. Sci Rep. 2013;3:1114. Doi: 10.1038/Srep01114. Epub 2013 Jan 23. S100+ Cells: A New Neuro-Im...

2. PubMed ID: 24659893, Yao J, Li Wy, Li Sg, Feng Xs, Gao Sg. World J Gastroenterol. 2014 Mar 21;20(11):3018-24. Doi: 10.3748/Wjg.V20.I11.3018. Midkine Promotes Perineural Invasion In Human Pancreatic Cancer.

Visit bosterbio.com/anti-syndecan-1-picoband-trade-antibody-pb9743-boster.html to see all 2 publications.

Submit a product review to Biocompare.com

Submit a review of this product to Biocompare.com to receive a \$20 Amazon.com giftcard! Your reviews help your fellow scientists make the right decisions. Thank you for your contribution.



Anti-Syndecan-1/SDC1 Antibody

For Research Use Only. Not for use in diagnostic procedures.