

## Anti-Prolactin Receptor/PRLR Antibody Picoband®

Catalog Number: PB9782

### About PRLR

PRLR (Prolactin Receptor) is a cytokine receptor. By somatic cell hybrid analysis and by in situ hybridization, Arden et al. (1989, 1990) demonstrated that the prolactin receptor gene resides in the same chromosomal region as the growth hormone receptor gene, which has been mapped to 5p13-p12. Cunningham et al. (1990) demonstrated that zinc greatly increases the affinity of GH for the extracellular binding domain of PRLR, although it is not required for binding of GH to the growth hormone receptor or for binding of prolactin to the prolactin receptor. By mutational analysis, they showed that a cluster of 3 residues (histidine-18, histidine-21, and glutamic acid-174) in GH and histidine-188 in PRLR (conserved in all PRL receptors but not GH receptors) are likely zinc-ion ligands.

### Overview

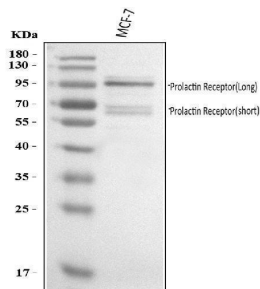
Product Name	Anti-Prolactin Receptor/PRLR Antibody Picoband®
Reactive Species	Human
Description	Boster Bio Anti-Prolactin Receptor/PRLR Antibody Picoband® catalog # PB9782. Tested in WB applications. This antibody reacts with Human. The brand Picoband indicates this is a premium antibody that guarantees superior quality, high affinity, and strong signals with minimal background in Western blot applications. Only our best-performing antibodies are designated as Picoband, ensuring unmatched performance.
Application	WB
Clonality	Polyclonal
Formulation	Each vial contains 4 mg Trehalose, 0.9 mg NaCl and 0.2 mg Na <sub>2</sub> HPO <sub>4</sub> .
Storage Instructions	Store at -20°C for one year from date of receipt. After reconstitution, at 4°C for one month. It can also be aliquotted and stored frozen at -20°C for six months. Avoid repeated freeze-thaw cycles.
Host	Rabbit
Uniprot ID	P16471

### Technical Details

Immunogen	A synthetic peptide corresponding to a sequence at the C-terminus of human PRLR, different from the related mouse sequence by eleven amino acids, and from the related rat sequence by fourteen amino acids.
Recommended Detection Systems	Boster recommends Enhanced Chemiluminescent Kit with anti-Rabbit IgG (EK1002) for Western blot.
Cross Reactivity	No cross-reactivity with other proteins.
Isotype	Rabbit IgG

Form	Lyophilized
Concentration	Adding 0.2 ml of distilled water will yield a concentration of 500 ug/ml.
Purification	Immunogen affinity purified.
Suggested Dilutions	Western blot, 0.1-0.5ug/ml, Human

## Anti-Prolactin Receptor/PRLR Antibody Picoband® (PB9782) Images



Western blot analysis of PRLR using anti-PRLR antibody (PB9782). Electrophoresis was performed on a 5-20% SDS-PAGE gel at 70V (Stacking gel) / 90V (Resolving gel) for 2-3 hours. The sample well of each lane was loaded with 30 ug of sample under reducing conditions. Lane 1: human MCF-7 whole cell lysates. After electrophoresis, proteins were transferred to a nitrocellulose membrane at 150 mA for 50-90 minutes. Blocked the membrane with 5% non-fat milk/TBS for 1.5 hour at RT. The membrane was incubated with rabbit anti-PRLR antigen affinity purified polyclonal antibody (Catalog # PB9782) at 0.5 ug/mL overnight at 4°C, then washed with TBS-0.1%Tween 3 times with 5 minutes each and probed with a goat anti-rabbit IgG-HRP secondary antibody at a dilution of 1:5000 for 1.5 hour at RT. The signal is developed using an Enhanced Chemiluminescent detection (ECL) kit (Catalog # EK1002) with Tanon 5200 system. A specific band was detected for PRLR at approximately 65, 95 kDa. The expected band size for PRLR is at 70 kDa.

### 1 Publications Citing This Product

1. PubMed ID: 28678802, miR-182 aids in receptive endometrium development in dairy goats by down-regulating PTN expression

Visit [bosterbio.com/anti-prlr-picoband-trade-antibody-pb9782-boster.html](http://bosterbio.com/anti-prlr-picoband-trade-antibody-pb9782-boster.html) to see all 1 publications.

### Submit a product review to Biocompare.com

Submit a review of this product to Biocompare.com to receive a \$20 Amazon.com giftcard! Your reviews help your fellow scientists make the right decisions. Thank you for your contribution.



Anti-Prolactin Receptor/PRLR Antibody

For Research Use Only. Not for use in diagnostic procedures.