

Anti-RALA Antibody Picoband®

Catalog Number: PB9794

About RALA

Ras-related protein Ral-A (RalA) is a protein that in humans is encoded by the RALA gene on chromosome 7. This protein is one of two isoforms of the Ral protein, the other being RalB, and part of the Ras GTPase family. As a Ras GTPase, RalA functions as a molecular switch that becomes active when bound to GTP and inactive when bound to GDP. It can be activated by RalGEFs and, in turn, activate effectors in signal transduction pathways leading to biological outcomes. Additionally, Ral proteins have been associated with the progression of several cancers, including bladder cancer and prostate cancer. While the above functions appear to be shared between the two Ral isoforms, their differential subcellular localizations result in their differing involvement in certain biological processes. In particular, RalA is more involved in anchorage-independent cell growth, vesicle trafficking, and cytoskeletal organization. Moreover, RalA specifically interacts with Exo84 and Sec5 to regulate transport of membrane proteins in polarized epithelial cells and GLUT4 to the plasma membrane, as well as mitochondrial fission for cell division.

Overview

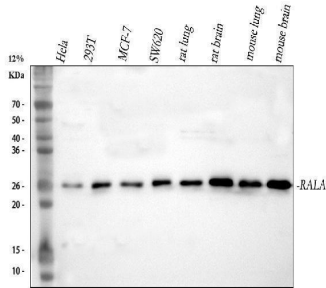
Product Name	Anti-RALA Antibody Picoband®
Reactive Species	Human, Mouse, Rat
Description	Boster Bio Anti-RALA Antibody Picoband® catalog # PB9794. Tested in WB applications. This antibody reacts with Human, Mouse, Rat. The brand Picoband indicates this is a premium antibody that guarantees superior quality, high affinity, and strong signals with minimal background in Western blot applications. Only our best-performing antibodies are designated as Picoband, ensuring unmatched performance.
Application	WB
Clonality	Polyclonal
Formulation	Each vial contains antibody formulated with stabilizing components, 0.9 mg NaCl, 0.2 mg Na ₂ HPO ₄ , and 0.05 mg Na ₃ . *This antibody is supplied in a stabilized formulation. Compatibility with conjugation reactions depends on the chemistry of the conjugation method used. For conjugation methods that are not compatible with the stabilizing components present in this formulation, a carrier-free antibody format is required.
Storage Instructions	Store at -20°C for one year from date of receipt. After reconstitution, at 4°C for one month. It can also be aliquotted and stored frozen at -20°C for six months. Avoid repeated freeze-thaw cycles.
Host	Rabbit
Uniprot ID	P11233

Technical Details

Immunogen	A synthetic peptide corresponding to a sequence at the C-terminus of human RALA, identical to the related mouse and rat sequences.
-----------	--

Recommended Detection Systems	Boster recommends Enhanced Chemiluminescent Kit with anti-Rabbit IgG (EK1002) for Western blot.
Cross Reactivity	No cross-reactivity with other proteins.
Isotype	Rabbit IgG
Form	Lyophilized
Concentration	Adding 0.2 ml of distilled water will yield a concentration of 500 ug/ml.
Purification	Immunogen affinity purified.
Suggested Dilutions	Western blot, 0.1-0.5ug/ml, Human, Mouse, Rat

Anti-RALA Antibody Picoband® (PB9794) Images



Western blot analysis of RALA using anti-RALA antibody (PB9794). Electrophoresis was performed on a 5-20% SDS-PAGE gel at 70V (Stacking gel) / 90V (Resolving gel) for 2-3 hours. The sample well of each lane was loaded with 30 ug of sample under reducing conditions. Lane 1: human HeLa whole cell lysates, Lane 2: human 293T whole cell lysates, Lane 3: human MCF-7 whole cell lysates, Lane 4: human SW620 whole cell lysates, Lane 5: rat lung tissue lysates, Lane 6: rat brain tissue lysates, Lane 7: mouse lung tissue lysates, Lane 8: mouse brain tissue lysates. After electrophoresis, proteins were transferred to a nitrocellulose membrane at 150 mA for 50-90 minutes. Blocked the membrane with 5% non-fat milk/TBS for 1.5 hour at RT. The membrane was incubated with rabbit anti-RALA antigen affinity purified polyclonal antibody (Catalog # PB9794) at 0.5 ug/mL overnight at 4°C, then washed with TBS-0.1%Tween 3 times with 5 minutes each and probed with a goat anti-rabbit IgG-HRP secondary antibody at a dilution of 1:5000 for 1.5 hour at RT. The signal is developed using an Enhanced Chemiluminescent detection (ECL) kit (Catalog # EK1002) with Tanon 5200 system. A specific band was detected for RALA at approximately 24 kDa. The expected band size for RALA is at 24 kDa.

Submit a product review to [Biocompare.com](https://www.biocompare.com)

Submit a review of this product to [Biocompare.com](https://www.biocompare.com) to receive a \$20 Amazon.com giftcard! Your reviews help your fellow scientists make the right decisions. Thank you for your contribution.



Anti-RALA Antibody

For Research Use Only. Not for use in diagnostic procedures.