

Anti-Rel B/RELB Antibody Picoband®

Catalog Number: PB9799

About RELB

RELB (v-rel reticuloendotheliosis viral oncogene homolog B) is also known as IREL. The International Radiation Hybrid Mapping Consortium assigned the RELB gene to chromosome 19. By RT-PCR and immunocytochemical analyses, Clark et al. (1999) showed that RELB expression correlated with dendritic cell activation. NF-kappa-B-inducing kinase is required for osteoclastogenesis in response to pathologic stimuli. Vaira et al. (2008) found that overexpression of Relb, but not Rela, rescued differentiation of mouse Nik ^{-/-} osteoclast precursors, indicating that blockade of the alternative NF-kappa-B pathway, rather than the classical NF-kappa-B pathway, is responsible for the osteoclastogenic defect in the absence of Nik. Using Relb ^{-/-} mice, they showed that Relb itself was required for Rankl-induced osteoclastogenesis in vitro and for TNF-induced bone resorption in vivo. Both Relb ^{-/-} and Nik ^{-/-} mice were resistant to tumor-mediated osteolysis. Vaira et al. (2008) concluded that the alternative NF-kappa-B pathway, via RELB, plays an essential and unique role in RANKL signaling toward osteoclast development.

Overview

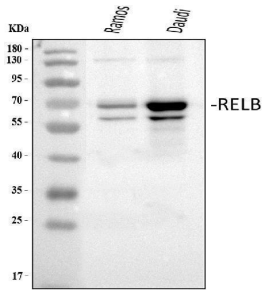
| | |
|----------------------|---|
| Product Name | Anti-Rel B/RELB Antibody Picoband® |
| Reactive Species | Human, Mouse |
| Description | Boster Bio Anti-Rel B/RELB Antibody Picoband® catalog # PB9799. Tested in WB applications. This antibody reacts with Human, Mouse. The brand Picoband indicates this is a premium antibody that guarantees superior quality, high affinity, and strong signals with minimal background in Western blot applications. Only our best-performing antibodies are designated as Picoband, ensuring unmatched performance. |
| Application | WB |
| Clonality | Polyclonal |
| Formulation | Each vial contains antibody formulated with stabilizing components, 0.9mg NaCl, 0.2mg Na ₂ HPO ₄ , 0.01mg NaN ₃ . *This antibody is supplied in a stabilized formulation. Compatibility with conjugation reactions depends on the chemistry of the conjugation method used. For conjugation methods that are not compatible with the stabilizing components present in this formulation, a carrier-free antibody format is required. |
| Storage Instructions | Store at -20°C for one year from date of receipt. After reconstitution, at 4°C for one month. It can also be aliquotted and stored frozen at -20°C for six months. Avoid repeated freeze-thaw cycles. |
| Host | Rabbit |
| Uniprot ID | Q01201 |

Technical Details

| | |
|-----------|---|
| Immunogen | A synthetic peptide corresponding to a sequence in the middle region of human Rel B, identical to the related mouse sequence. |
|-----------|---|

| | |
|-------------------------------|---|
| Recommended Detection Systems | Boster recommends Enhanced Chemiluminescent Kit with anti-Rabbit IgG (EK1002) for Western blot. |
| Cross Reactivity | No cross-reactivity with other proteins. |
| Isotype | Rabbit IgG |
| Form | Lyophilized |
| Concentration | Adding 0.2 ml of distilled water will yield a concentration of 500 ug/ml. |
| Purification | Immunogen affinity purified. |
| Suggested Dilutions | Western blot, 0.1-0.5ug/ml, Human, Mosue |

Anti-Rel B/RELB Antibody Picoband® (PB9799) Images



Western blot analysis of Rel B using anti-Rel B antibody (PB9799). Electrophoresis was performed on a 5-20% SDS-PAGE gel at 70V (Stacking gel) / 90V (Resolving gel) for 2-3 hours. The sample well of each lane was loaded with 30 ug of sample under reducing conditions. Lane 1: human Ramos whole cell lysates, Lane 2: human Daudi whole cell lysates. After electrophoresis, proteins were transferred to a nitrocellulose membrane at 150 mA for 50-90 minutes. Blocked the membrane with 5% non-fat milk/TBS for 1.5 hour at RT. The membrane was incubated with rabbit anti-Rel B antigen affinity purified polyclonal antibody (Catalog # PB9799) at 0.5 ug/mL overnight at 4°C, then washed with TBS-0.1%Tween 3 times with 5 minutes each and probed with a goat anti-rabbit IgG-HRP secondary antibody at a dilution of 1:5000 for 1.5 hour at RT. The signal is developed using an Enhanced Chemiluminescent detection (ECL) kit (Catalog # EK1002) with Tanon 5200 system. A specific band was detected for Rel B at approximately 65-70 kDa. The expected band size for Rel B is at 62 kDa.

Submit a product review to Biocompare.com

Submit a review of this product to Biocompare.com to receive a \$20 Amazon.com giftcard! Your reviews help your fellow scientists make the right decisions. Thank you for your contribution.



Anti-Rel B/RELB Antibody

For Research Use Only. Not for use in diagnostic procedures.