

Anti-UBE2Q2 Antibody Picoband®

Catalog Number: PB9839

About UBE2Q2

UBE2Q2 is identified as a putative ubiquitin-conjugating enzyme (E2) in a microarray screen for mitotic regulatory proteins. Its gene is mapped to 15q24.2. UBE2Q2 can covalently bind ubiquitin on the active site cysteine within the UBC domain. Inhibition of UBE2Q2 in HeLa cells causes an early mitotic arrest and increases cytotoxicity when the cells are treated with microtubule-inhibiting agents (MIAs). Changes in cell cycle progression and viability are not observed in the absence of MIA treatment, indicating that UBE2Q2 is involved in the response to MIAs rather than performing a more general function in mitosis. Moreover, inhibition of the UBE2Q2 protein causes cells to undergo a prolonged prophase arrest, suggesting that UBE2Q2 normally functions to antagonize an early mitotic checkpoint. Finally, inhibition of UBE2Q2 also sensitizes cells to the cytotoxic effects of MIAs through caspase-mediated apoptosis that is correlated with PARP1 cleavage.

Overview

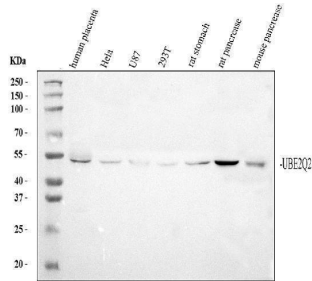
Product Name	Anti-UBE2Q2 Antibody Picoband®
Reactive Species	Human, Mouse, Rat
Description	Boster Bio Anti-UBE2Q2 Antibody Picoband® catalog # PB9839. Tested in Flow Cytometry, WB applications. This antibody reacts with Human, Mouse, Rat. The brand Picoband indicates this is a premium antibody that guarantees superior quality, high affinity, and strong signals with minimal background in Western blot applications. Only our best-performing antibodies are designated as Picoband, ensuring unmatched performance.
Application	Flow Cytometry, WB
Clonality	Polyclonal
Formulation	Each vial contains 4 mg Trehalose, 0.9 mg NaCl and 0.2 mg Na ₂ HPO ₄ .
Storage Instructions	Store at -20°C for one year from date of receipt. After reconstitution, at 4°C for one month. It can also be aliquotted and stored frozen at -20°C for six months. Avoid repeated freeze-thaw cycles.
Host	Rabbit
Uniprot ID	Q8WVN8

Technical Details

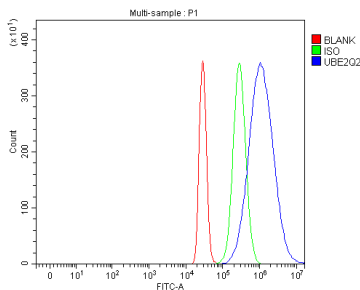
Immunogen	A synthetic peptide corresponding to a sequence at the N-terminus of human UBE2Q2, different from the related mouse sequence by four amino acids.
Recommended Detection Systems	Boster recommends Enhanced Chemiluminescent Kit with anti-Rabbit IgG (EK1002) for Western blot, and HRP Conjugated anti-Rabbit IgG Super Vision Assay Kit (SV0002-1) for IHC(P) and ICC.
Cross Reactivity	No cross-reactivity with other proteins
Isotype	Rabbit IgG

Form	Lyophilized
Concentration	Adding 0.2 ml of distilled water will yield a concentration of 500 ug/ml.
Purification	Immunogen affinity purified.
Suggested Dilutions	Western blot, 0.1-0.5ug/ml, Human, Mouse, Rat Flow Cytometry (Fixed), 1-3ug/1x10 ⁶ cells, Human

Anti-UBE2Q2 Antibody Picoband® (PB9839) Images



Western blot analysis of UBE2Q2 using anti-UBE2Q2 antibody (PB9839). Electrophoresis was performed on a 10% SDS-PAGE gel at 80V (Stacking gel) / 120V (Resolving gel) for 2 hours. The sample well of each lane was loaded with 30 ug of sample under reducing conditions. Lane 1: human placenta tissue lysates, Lane 2: human Hela whole cell lysates, Lane 3: human U87 whole cell lysates, Lane 4: human 293T whole cell lysates, Lane 5: rat stomach tissue lysates, Lane 6: rat pancreas tissue lysates, Lane 7: mouse pancreas tissue lysates. After electrophoresis, proteins were transferred to a nitrocellulose membrane at 150 mA for 50-90 minutes. Blocked the membrane with 5% non-fat milk/TBS for 1.5 hour at RT. The membrane was incubated with rabbit anti-UBE2Q2 antigen affinity purified polyclonal antibody (PB9839) at 0.5 ug/mL overnight at 4°C, then washed with TBS-0.1%Tween 3 times with 5 minutes each and probed with a goat anti-rabbit IgG-HRP secondary antibody (Catalog # BA1054) at a dilution of 1:5000 for 1.5 hour at RT. The signal is developed using an ECL Plus Western Blotting Substrate (Catalog # AR1196-200) with Tanon 5200 system. A specific band was detected for UBE2Q2 at approximately 49 kDa. The expected band size for UBE2Q2 is at 43 kDa.



Flow Cytometry analysis of HepG2 cells using anti-UBE2Q2 antibody (PB9839). Overlay histogram showing HepG2 cells stained with PB9839 (Blue line). To facilitate intracellular staining, cells were fixed with 4% paraformaldehyde and permeabilized with permeabilization buffer. The cells were blocked with 10% normal goat serum. And then incubated with rabbit anti-UBE2Q2 Antibody (PB9839, 1 ug/1x10⁶ cells) for 30 min at 20°C. DyLight®488 conjugated goat anti-rabbit IgG (BA1127, 5-10 ug/1x10⁶ cells) was used as secondary antibody for 30 minutes at 20°C. Isotype control antibody (Green line) was rabbit IgG (1 ug/1x10⁶) used under the same conditions. Unlabelled sample without incubation with primary antibody and secondary antibody (Red line) was used as a blank control.

Submit a product review to [Biocompare.com](https://www.biocompare.com)

Submit a review of this product to [Biocompare.com](https://www.biocompare.com) to receive a \$20 Amazon.com giftcard! Your reviews help your fellow scientists make the right decisions. Thank you for your contribution.



Anti-UBE2Q2 Antibody

For Research Use Only. Not for use in diagnostic procedures.